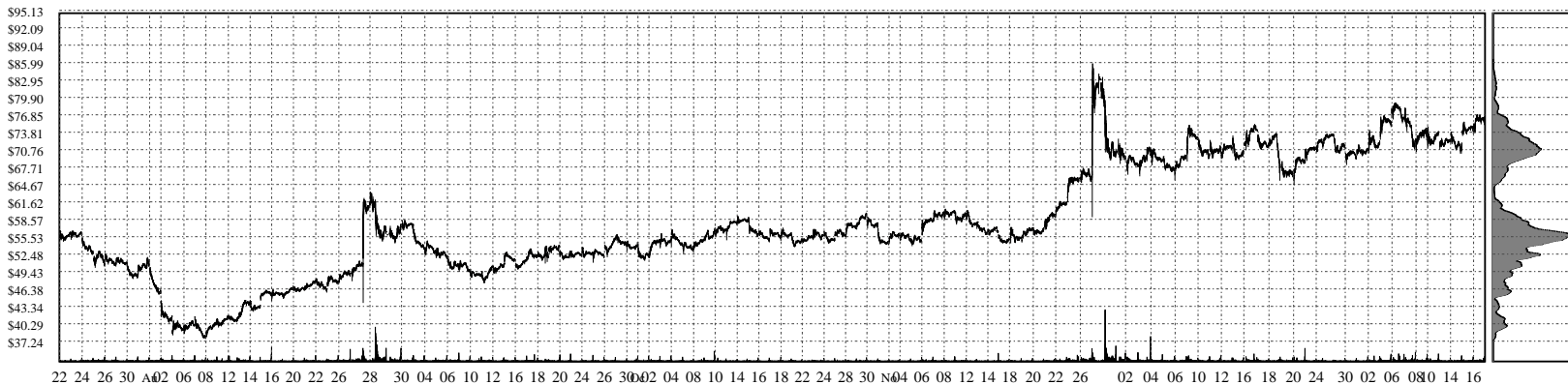
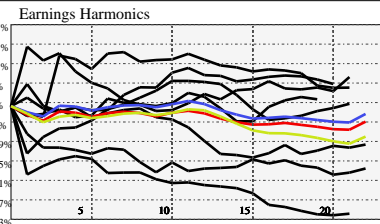


AMBA- Ambarella, Inc. Ordinary Shares

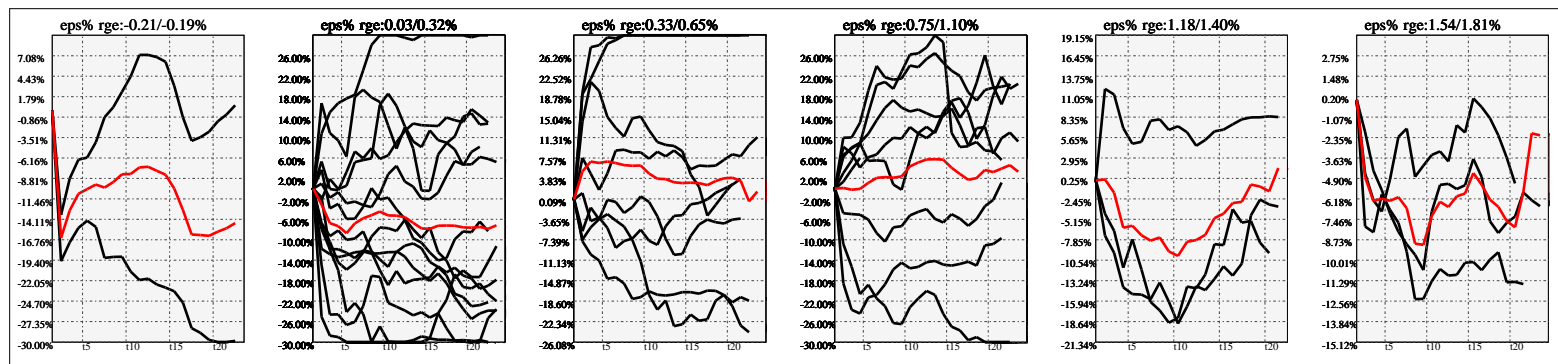


Company Snapshot: AMBA

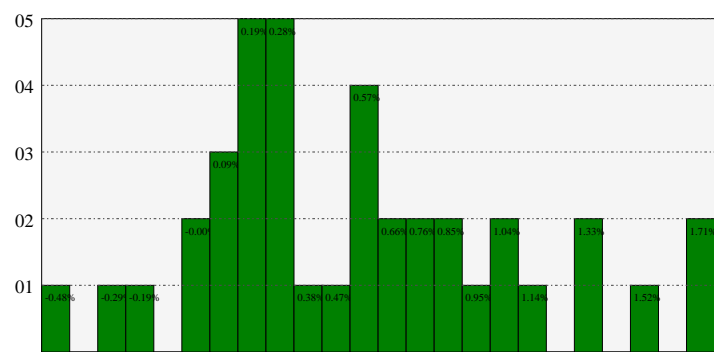
| Date | Rev. \$\$ | Profit R: | Gross Profit | ebitda | ebitda R: | eps | eps% | Dbt. Exp | Dbt. R: | Net Inc. | Netl R: |
|------------|-----------|-----------|--------------|--------|-----------|-------|-------|----------|----------|----------|---------|
| 2023-01-31 | 337.6M | 0.62 | 208.9M | -74.3M | -0.22 | -1.7 | -2.0% | -19.9M | -0.05905 | -65.4M | -0.1937 |
| 2022-01-31 | 331.9M | 0.63 | 208.1M | -29.6M | -0.09 | -0.72 | -0.5% | -15.0M | -0.04523 | -26.4M | -0.0796 |
| 2021-01-31 | 223.0M | 0.61 | 135.6M | -61.2M | -0.27 | -1.72 | -1.8% | | | -59.8M | -0.2681 |
| 2020-01-31 | 228.7M | 0.58 | 132.7M | -49.6M | -0.22 | -1.35 | -2.2% | | | -44.8M | -0.1958 |
| 2019-01-31 | 227.8M | 0.61 | 138.1M | -40.4M | -0.18 | -0.93 | -2.4% | | | -30.4M | -0.1337 |
| 2018-01-31 | 295.4M | 0.64 | 187.7M | 24.4M | 0.08 | 0.57 | 1.1% | | | 18.9M | 0.0638 |
| 2017-01-31 | 310.3M | 0.66 | 205.0M | 60.4M | 0.19 | 1.77 | 3.6% | | | 57.8M | 0.1863 |
| 2016-01-31 | 316.4M | 0.65 | 205.3M | 84.7M | 0.27 | 2.42 | 6.2% | | | 76.5M | 0.2418 |



Earnings Quadrature: Size[6]



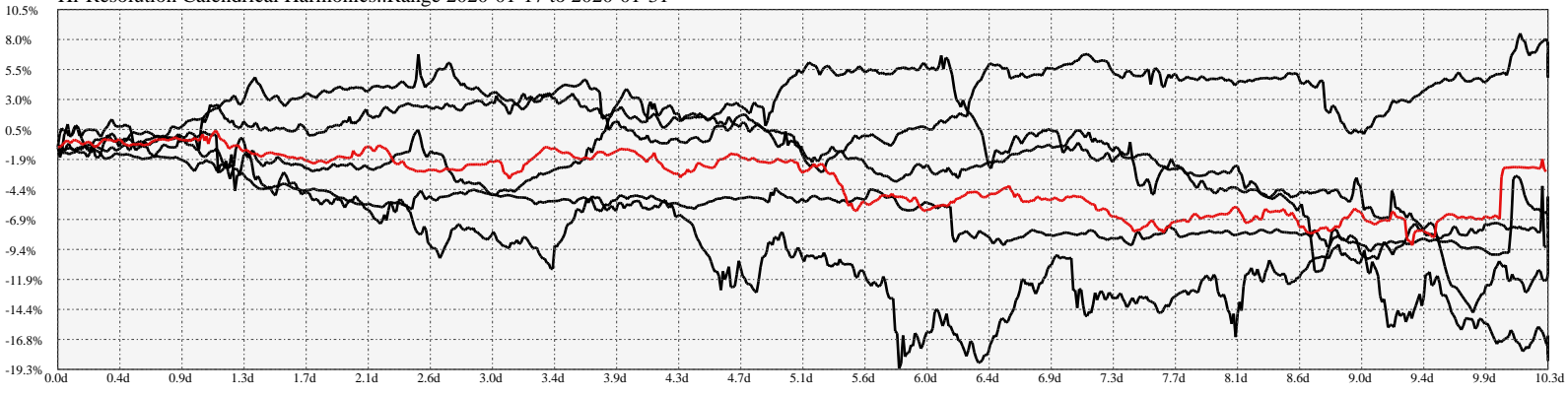
Earnings Frequency Spectrum: -0.48% to 1.71%



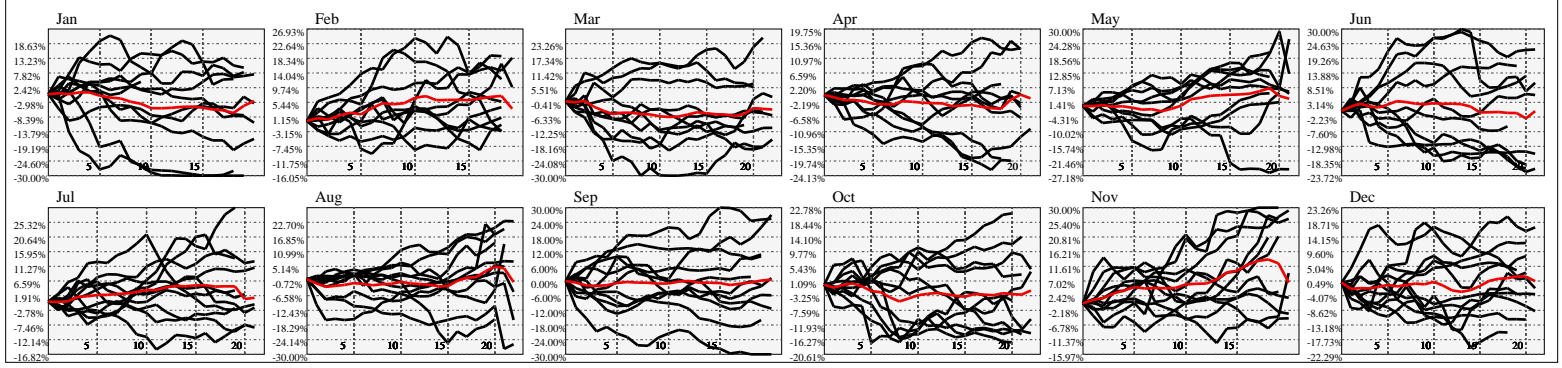
Earnings Calendar As of: 2025-Jan-17

| Date | days.. | eps \$ | Earnings Est. |
|------|--------|--------|---------------|
| | | | |
| | | | |
| | | | |
| | | | |

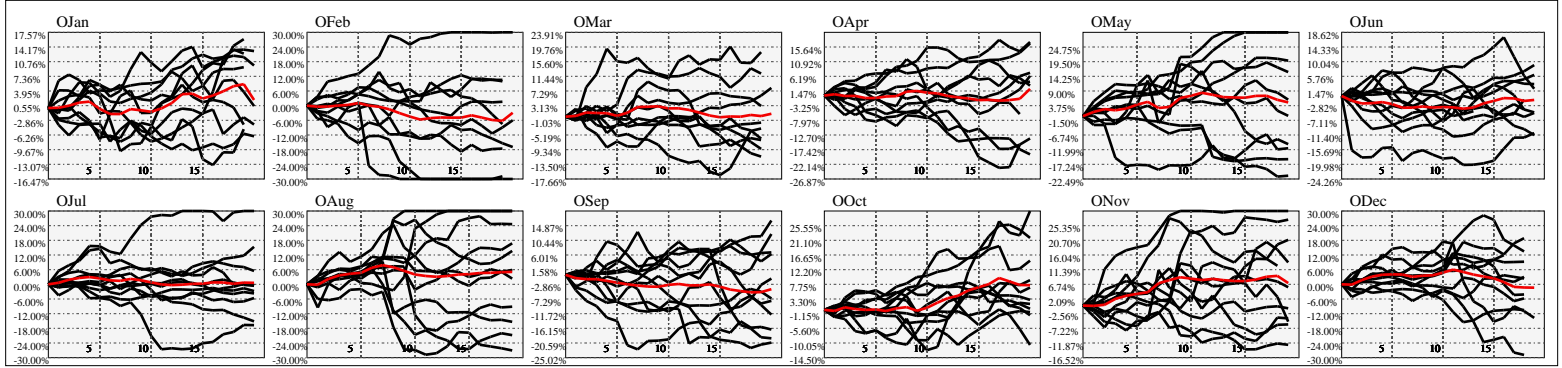
Hi-Resolution Calendrical Harmonics..Range 2020-01-17 to 2020-01-31



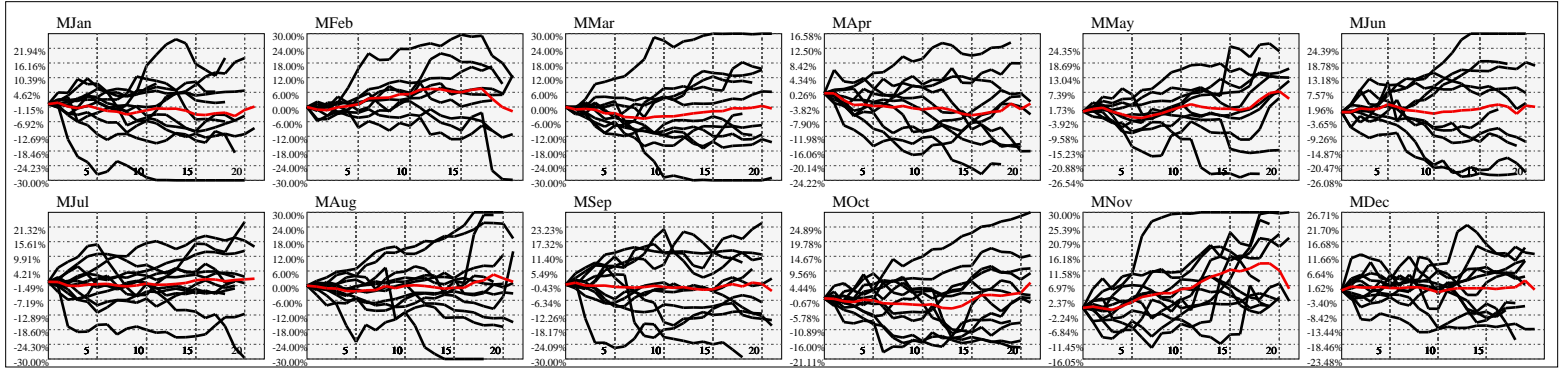
Calendrical Harmonics Standard..



Calendrical Harmonics 3rd Friday..



Calendrical Harmonics Moon Aligned..



Calendrical Harmonics Weekly w/ Day Of Week Alignments..

