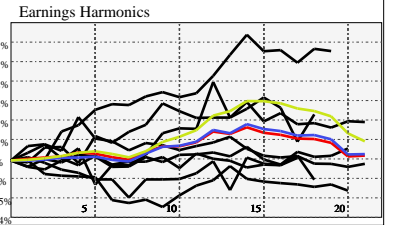


# ATIF - ATIF Holdings Limited Ordinary Shares

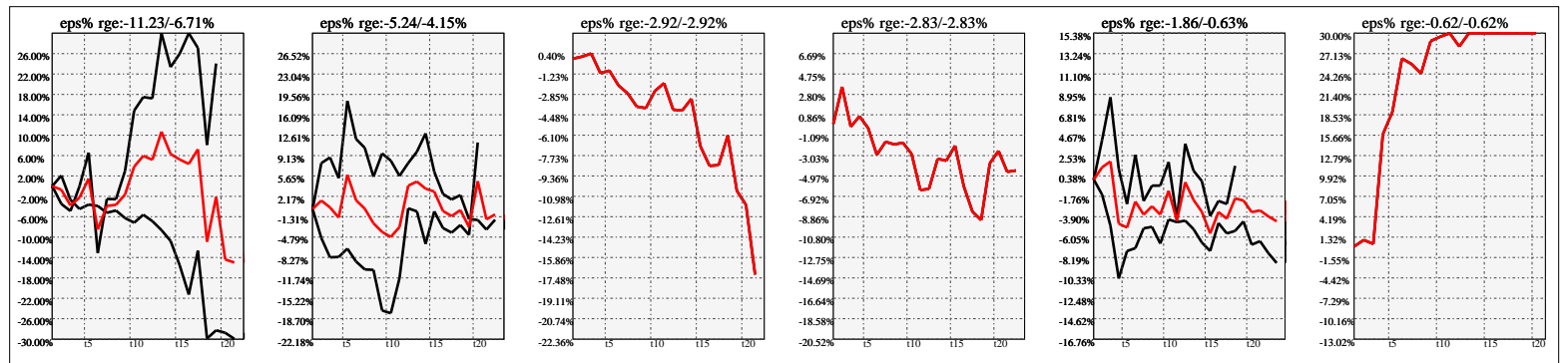


## Company Snapshot: ATIF

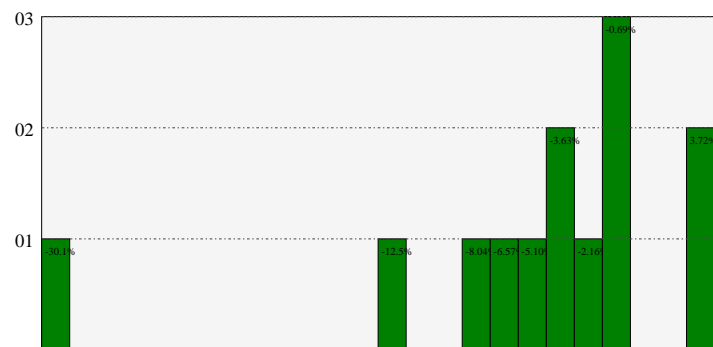
Date	Rev. \$\$	Profit R:	Gross Profit	ebitda	ebitda R:	eps	eps%	Dbt. Exp	Dbt. R:	Net Inc.	Netl R:
2023-07-31	2.450M	1.00	2.450M	-3.091M	-1.26	-0.3	-19.4%			-2.882M	-1.1764
2022-07-31	1.667M	0.60	1.007M	-241.5k	-0.14	-0.43	-23.4%	354.8k	0.21282	-4.068M	-2.4398
2021-07-31	936.9k	1.00	936.9k	-1.441M	-1.54	-0.93	-24.7%			-8.822M	-9.4160
2020-07-31	686.0k	0.67	458.6k	-3.495M	-5.09	-2.17	-25.4%			-17.3M	-25.2047
2019-07-31	3.079M	1.00	3.079M	721.9k	0.23	0.0604	0.4%			429.2k	0.1394
2018-07-31	5.308M	1.00	5.308M	2.744M	0.52	0.28		63.98k	0.01205	1.947M	0.3668
2017-07-31	3.635M	1.00	3.635M	936.4k	0.26	0.0916		67.08k	0.01845	641.0k	0.1763



## Earnings Quadrature: Size[6]



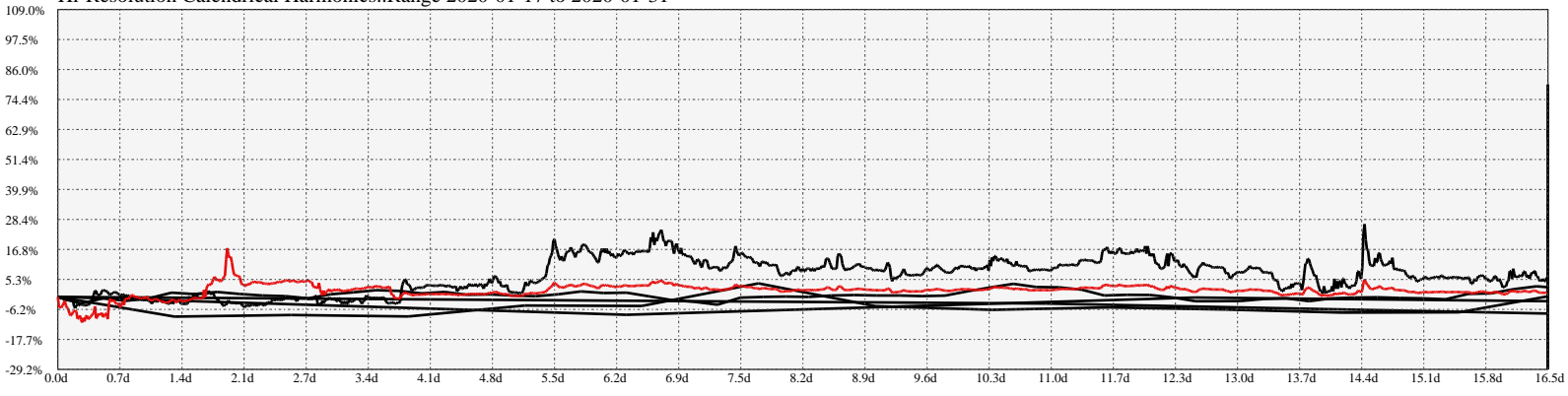
## Earnings Frequency Spectrum: -30.09% to 3.72%



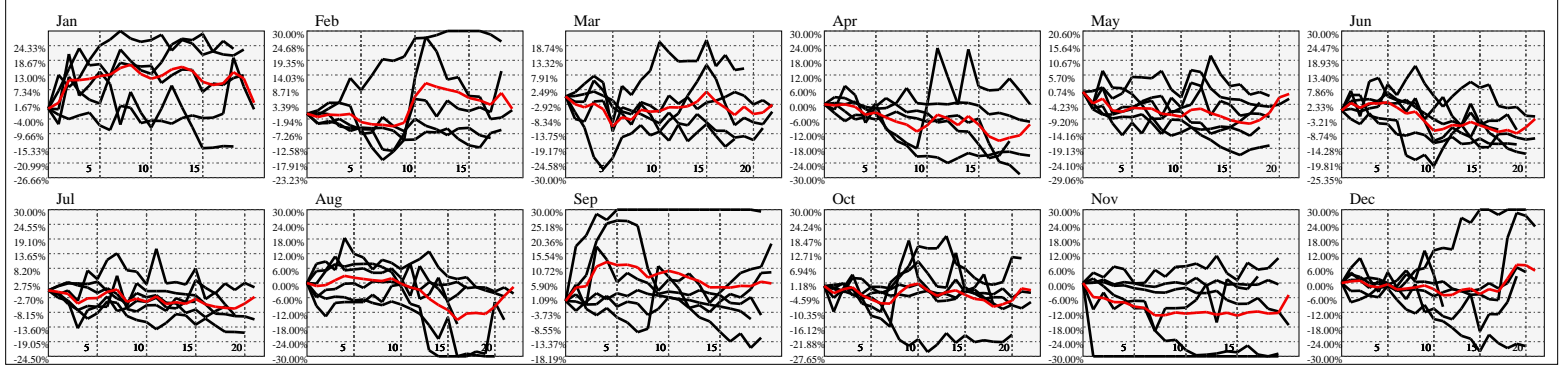
## Earnings Calendar As of: 2025-Jan-17

Date	days..	eps \$	Earnings Est.

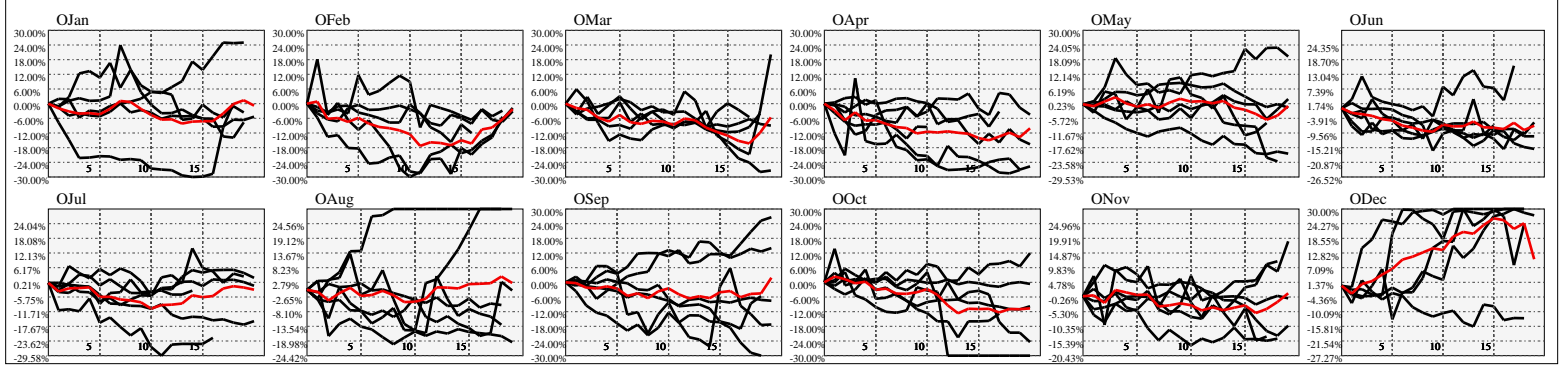
Hi-Resolution Calendrical Harmonics..Range 2020-01-17 to 2020-01-31



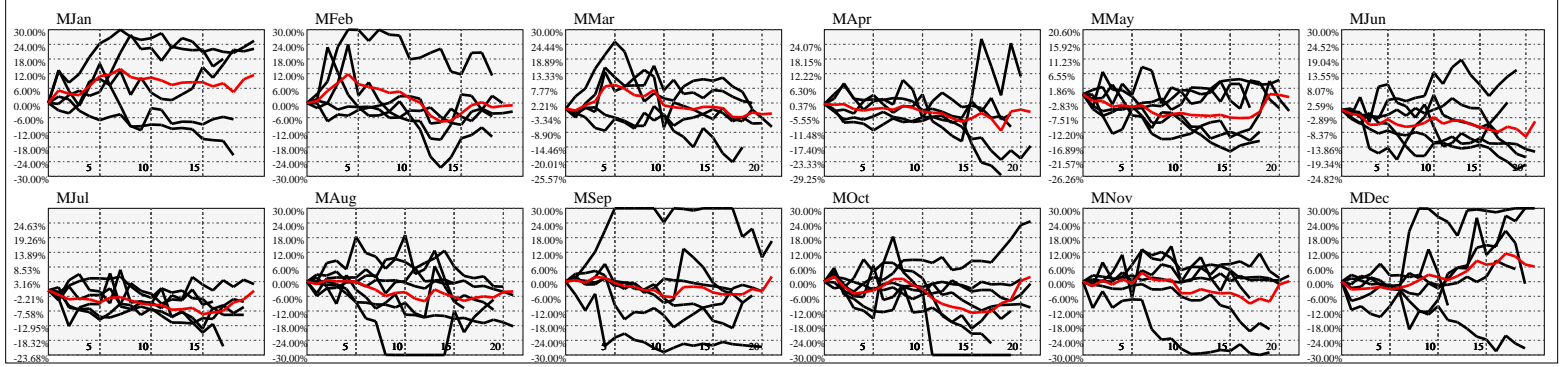
Calendrical Harmonics Standard..



Calendrical Harmonics 3rd Friday..



Calendrical Harmonics Moon Aligned..



Calendrical Harmonics Weekly w/ Day Of Week Alignments..

