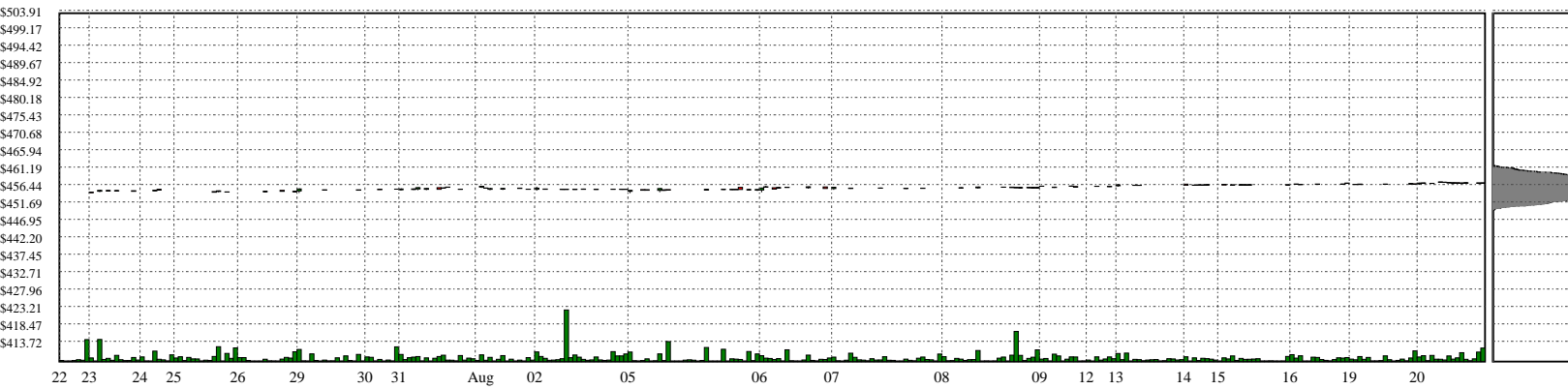
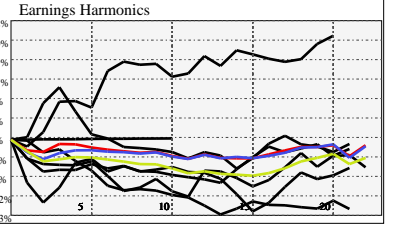


ATRI - Atrion Corp

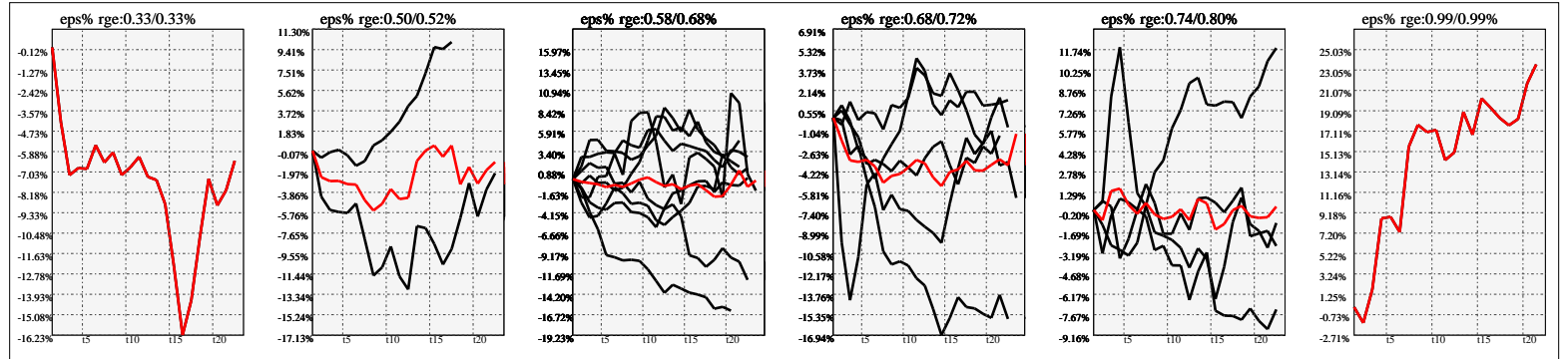


Company Snapshot: ATRI

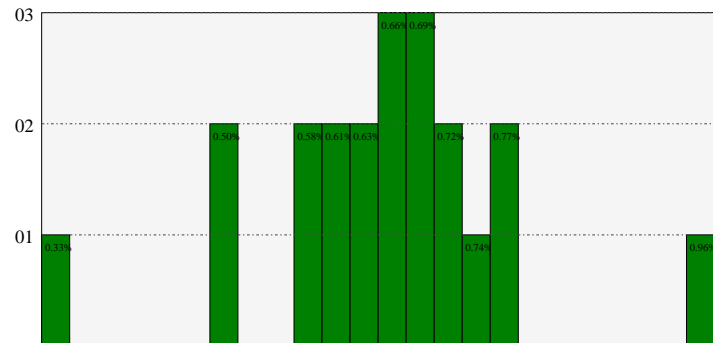
Date	Rev. \$\$	Profit R:	Gross Profit	ebitda	ebitda R:	eps	eps%	Dbt. Exp	Dbt. R:	Net Inc.	Netl R:
2023-12-31				19.4M		11.02	2.8%			19.4M	
2022-12-31	183.5M	0.41	75.9M	39.8M	0.22	19.59	3.5%	988.0k	0.00538	35.0M	0.1908
2021-12-31	165.0M	0.42	69.4M	34.6M	0.21	18.22	2.5%			33.1M	0.2003
2020-12-31	147.6M	0.45	66.2M	34.3M	0.23	17.49	2.7%			32.1M	0.2176
2019-12-31	155.1M	0.46	70.7M	40.4M	0.26	19.82	2.7%			36.8M	0.2371
2018-12-31	152.4M	0.47	71.8M	43.0M	0.28	18.44				34.3M	0.2247
2017-12-31	146.6M	0.48	70.8M	40.2M	0.27	19.82				36.6M	0.2496
2016-12-31	143.5M	0.47	67.6M	39.1M	0.27	15.12				27.6M	0.1922



Earnings Quadrature: Size[6]



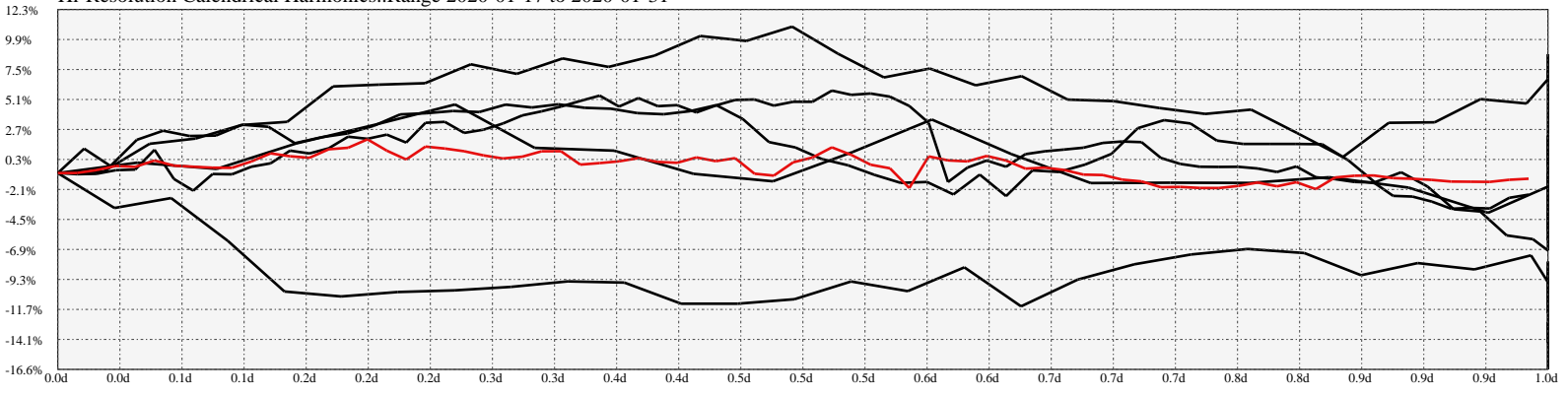
Earnings Frequency Spectrum: 0.33% to 0.96%



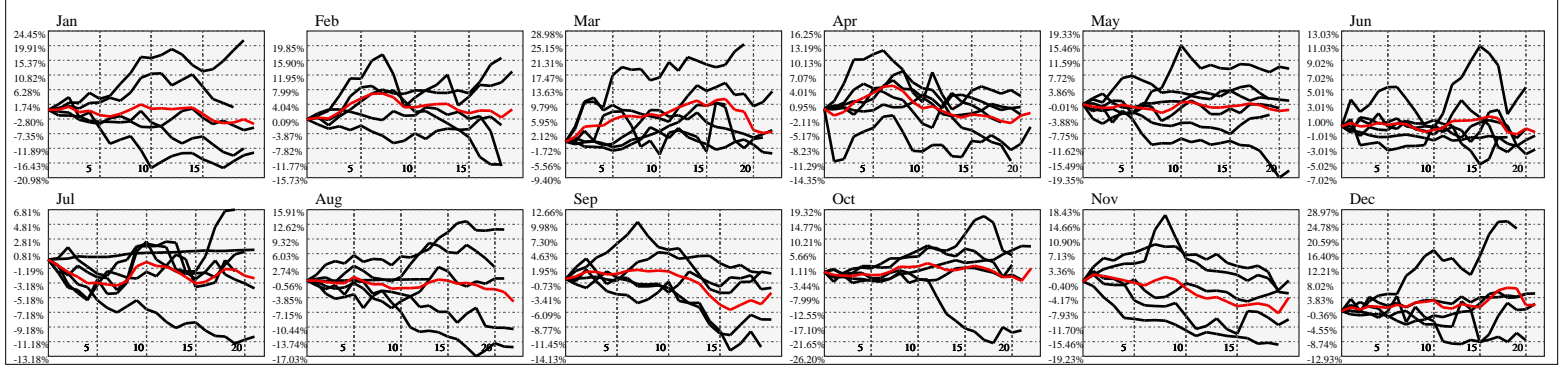
Earnings Calendar As of: 2025-Jan-17

Date	days..	eps \$	Earnings Est.

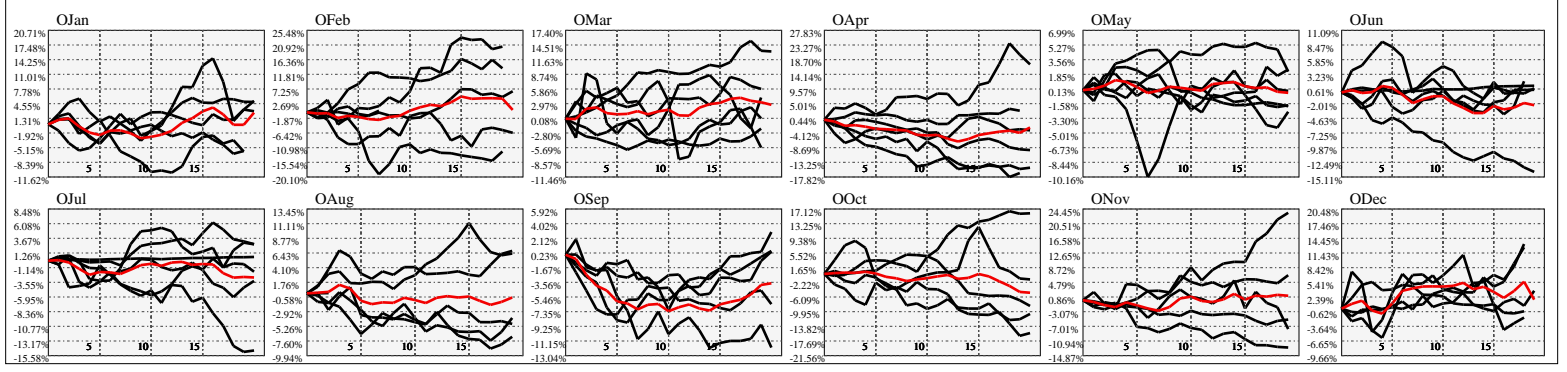
Hi-Resolution Calendrical Harmonics..Range 2020-01-17 to 2020-01-31



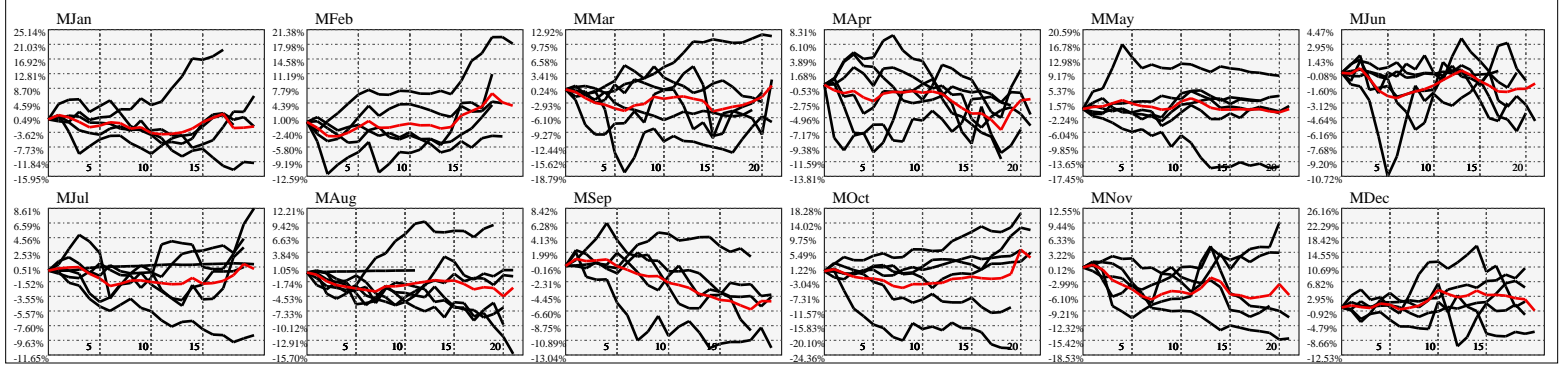
Calendrical Harmonics Standard.



Calendrical Harmonics 3rd Friday.



Calendrical Harmonics Moon Aligned.



Calendrical Harmonics Weekly w/ Day Of Week Alignments..

