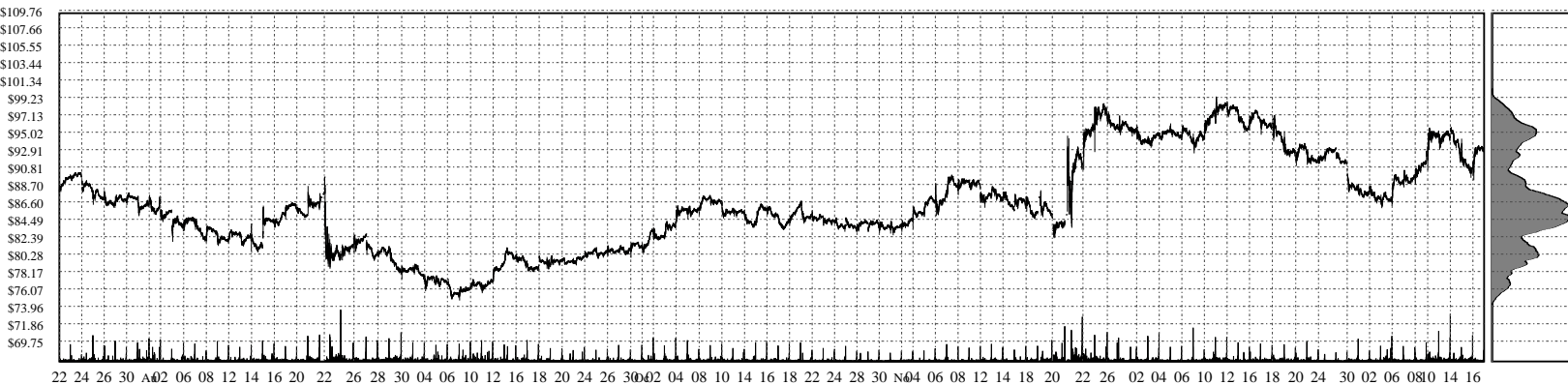
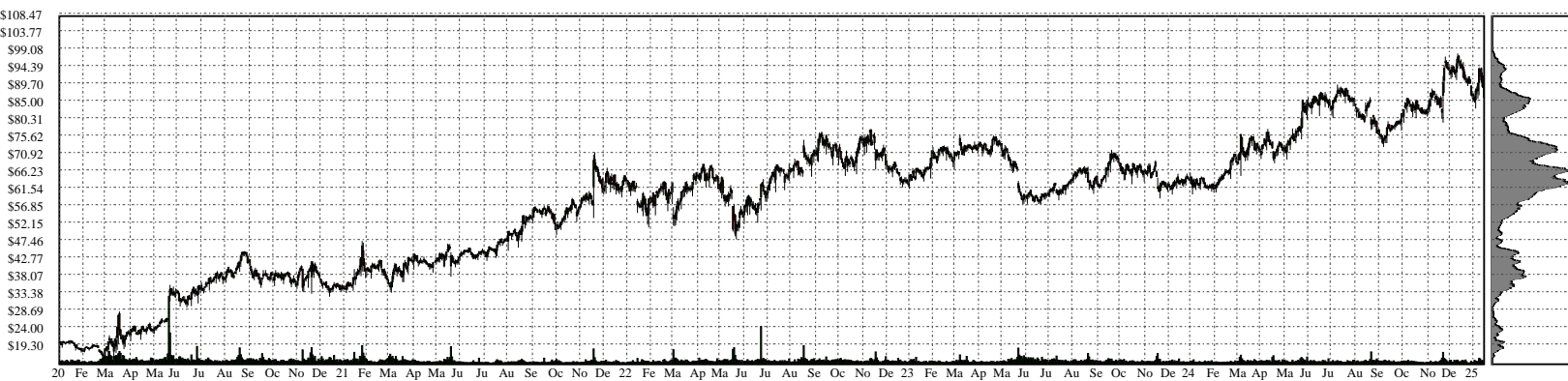
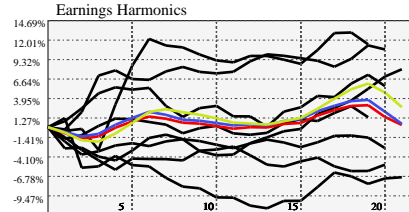


BJ- BJs Wholesale Club Holdings, Inc. Common

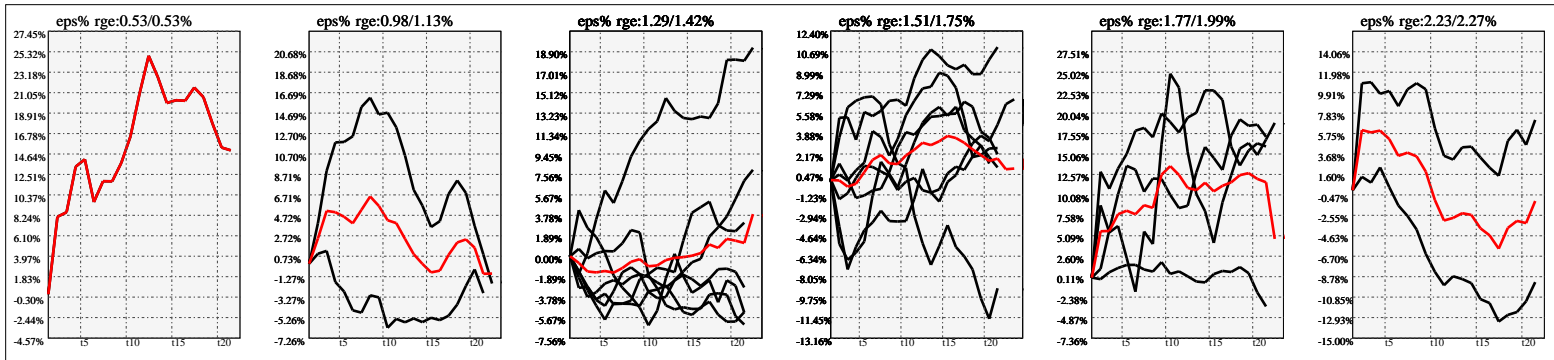


Company Snapshot: BJ

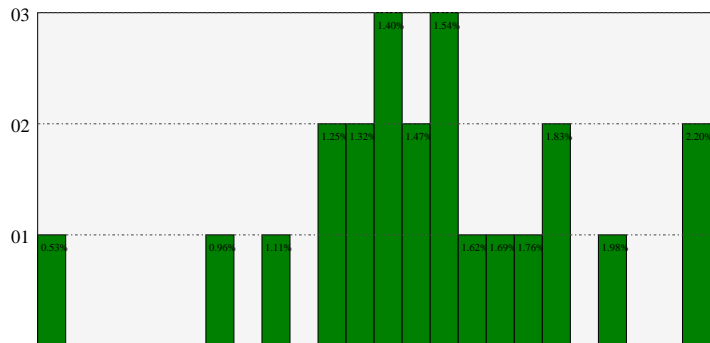
Date	Rev. \$\$	Profit R:	Gross Profit	ebitda	ebitda R:	eps	eps%	Dbt. Exp	Dbt. R:	Net Inc.	Netl R:
2023-01-28	19.32B	0.18	3.431B	938.9M	0.05	3.83	5.5%	47.5M	0.00246	513.2M	0.0266
2022-01-29	16.67B	0.18	3.079B	797.9M	0.05	3.15	5.5%	59.4M	0.00357	426.7M	0.0256
2021-01-30	15.43B	0.19	2.979B	809.8M	0.05	3.09	7.0%	84.4M	0.00547	421.0M	0.0273
2020-02-01	13.19B	0.18	2.427B	509.2M	0.04	1.37	6.5%	108.2M	0.00821	187.2M	0.0142
2019-02-02	13.01B	0.18	2.361B	465.7M	0.04	1.09	4.1%	164.5M	0.01265	127.3M	0.0098
2018-01-31	12.75B	0.18	2.241B	359.2M	0.03	0.4		171.6M	0.01345	50.3M	0.0039
2017-01-31	12.35B	0.17	2.128B	386.8M	0.03	0.35		135.8M	0.01100	44.2M	0.0036
2016-01-31	12.47B	0.16	1.991B	356.9M	0.03	0.19		142.7M	0.01144	24.1M	0.0019



Earnings Quadrature: Size[6]



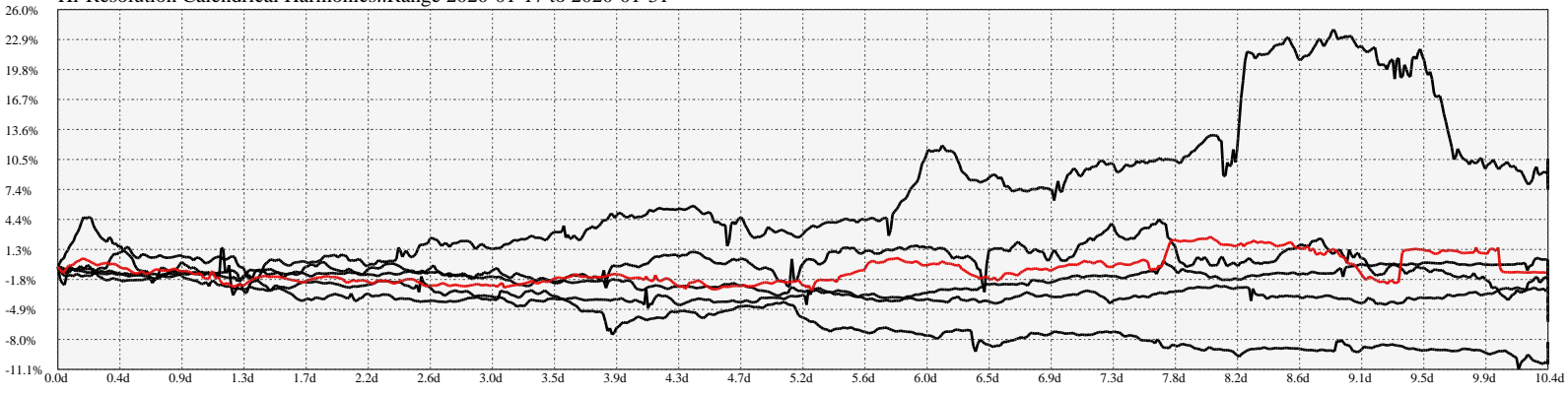
Earnings Frequency Spectrum: 0.53% to 2.20%



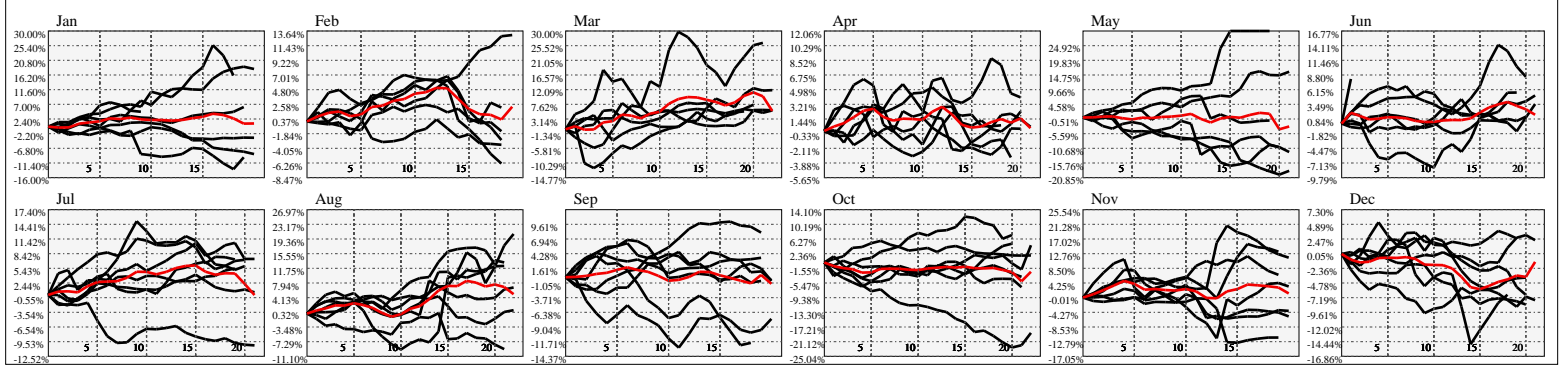
Earnings Calendar As of: 2025-Jan-17

Date	days..	eps \$	Earnings Est.

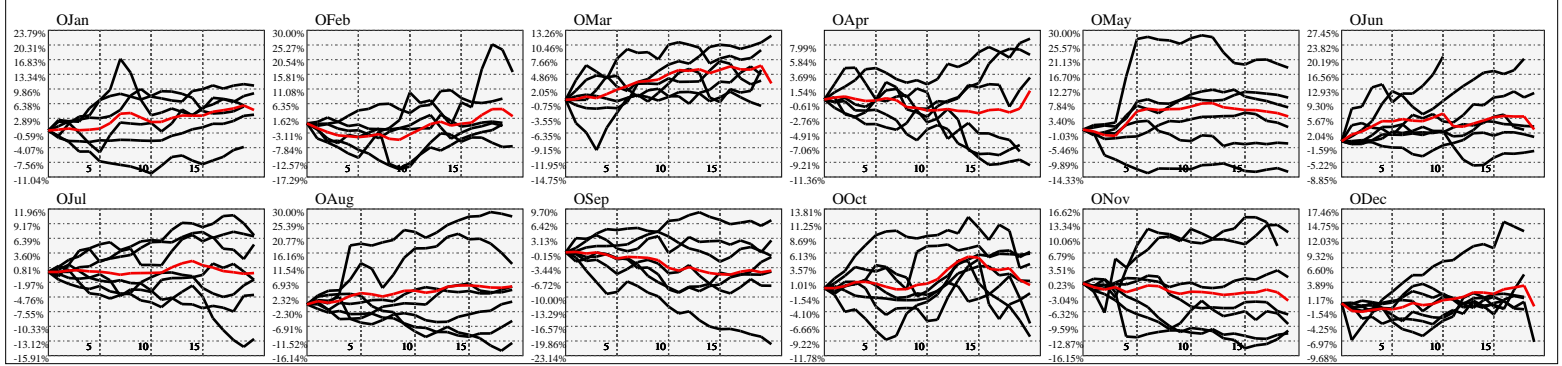
Hi-Resolution Calendrical Harmonics..Range 2020-01-17 to 2020-01-31



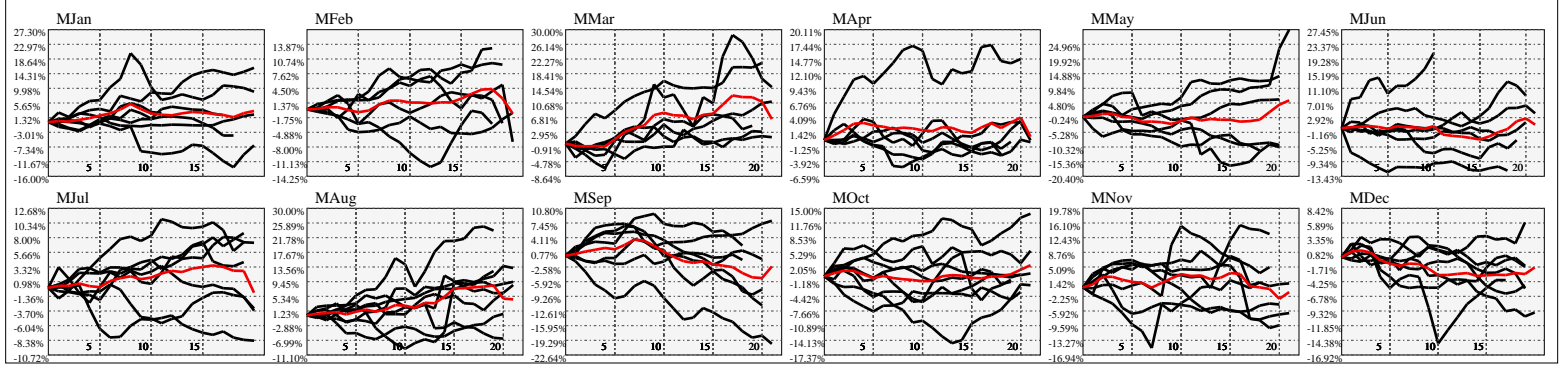
Calendrical Harmonics Standard..



Calendrical Harmonics 3rd Friday..



Calendrical Harmonics Moon Aligned..



Calendrical Harmonics Weekly w/ Day Of Week Alignments..

