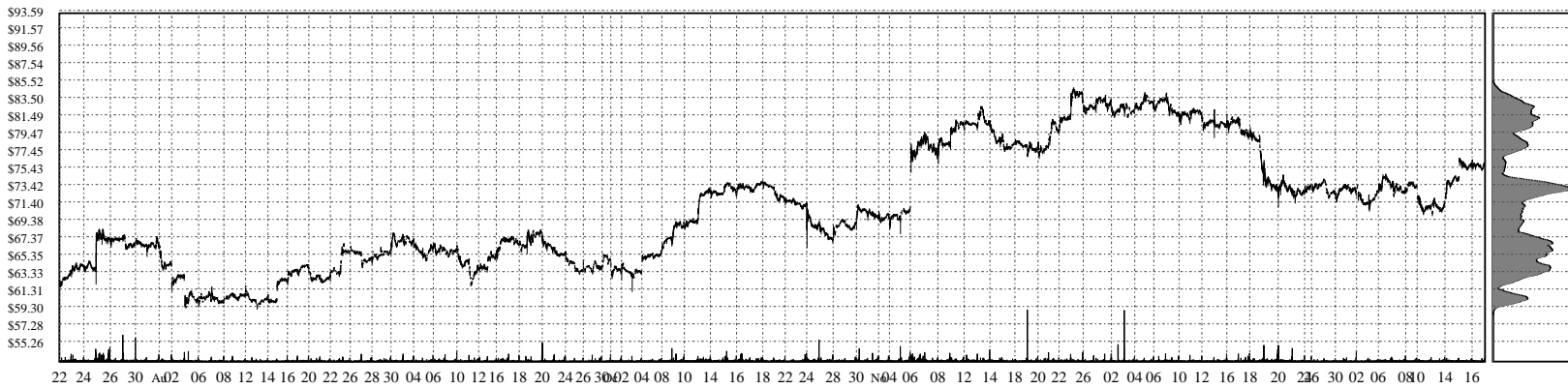
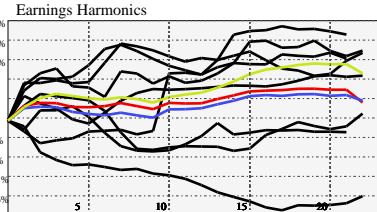


CASH - Pathward Financial, Inc. Common Stock

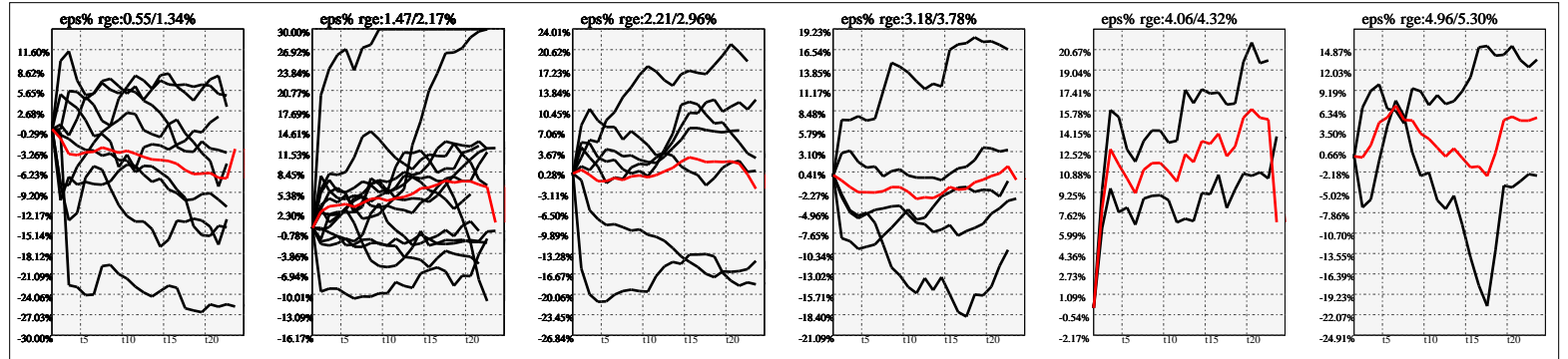


Company Snapshot: CASH

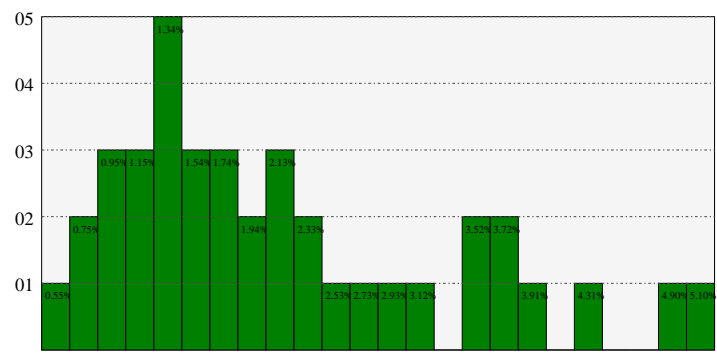
Date	Rev. \$\$	Profit R:	Gross Profit	ebitda	ebitda R:	eps	eps%	Dbt. Exp	Dbt. R:	Net Inc.	Netl R:
2023-09-30	577.4M	0.55	316.6M	177.5M	0.31	6.01	13.0%	10.9M	0.01883	163.6M	0.2834
2022-09-30	501.3M	1.00	501.3M	250.8M	0.50	5.26	16.0%	4.872M	0.00972	156.4M	0.3120
2021-09-30	508.3M	1.00	508.3M	191.9M	0.38	4.38	8.3%	6.863M	0.01350	141.7M	0.2788
2020-09-30	443.2M	1.00	443.2M	154.2M	0.35	2.94	15.2%	33.8M	0.07626	104.7M	0.2363
2019-09-30	452.4M	1.00	452.4M	137.5M	0.30	2.56	7.9%	61.5M	0.13598	97.0M	0.2144
2018-09-30	275.2M	1.00	275.2M	84.9M	0.31	1.68	6.1%	28.0M	0.10168	51.6M	0.1876
2017-09-30	226.1M	1.00	226.1M	115.1M	0.51	1.62	6.2%	14.9M	0.06577	44.9M	0.1986
2016-09-30	178.1M	0.83	147.2M	78.5M	0.44	1.32	6.5%	4.091M	0.02297	33.2M	0.1866



Earnings Quadrature: Size[6]



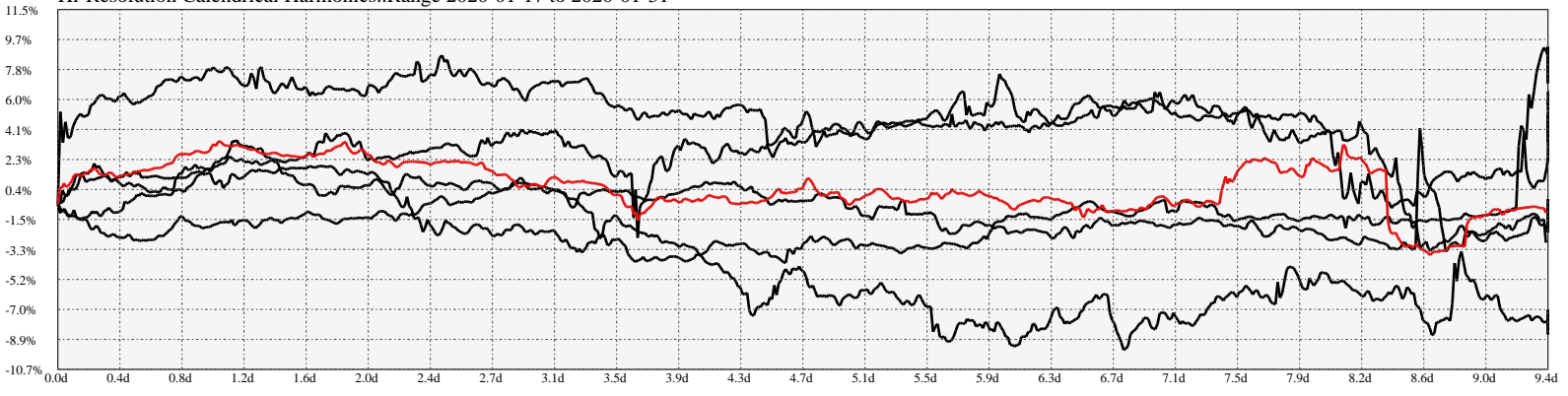
Earnings Frequency Spectrum: 0.55% to 5.10%



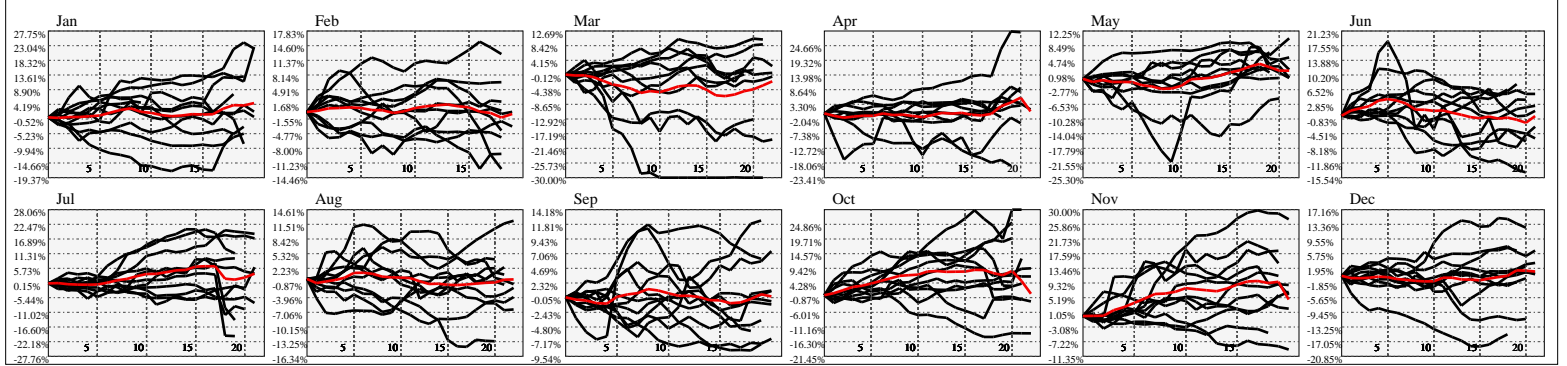
Earnings Calendar As of: 2025-Jan-17

Date	days..	eps \$	Earnings Est.
2025-01-22	4		

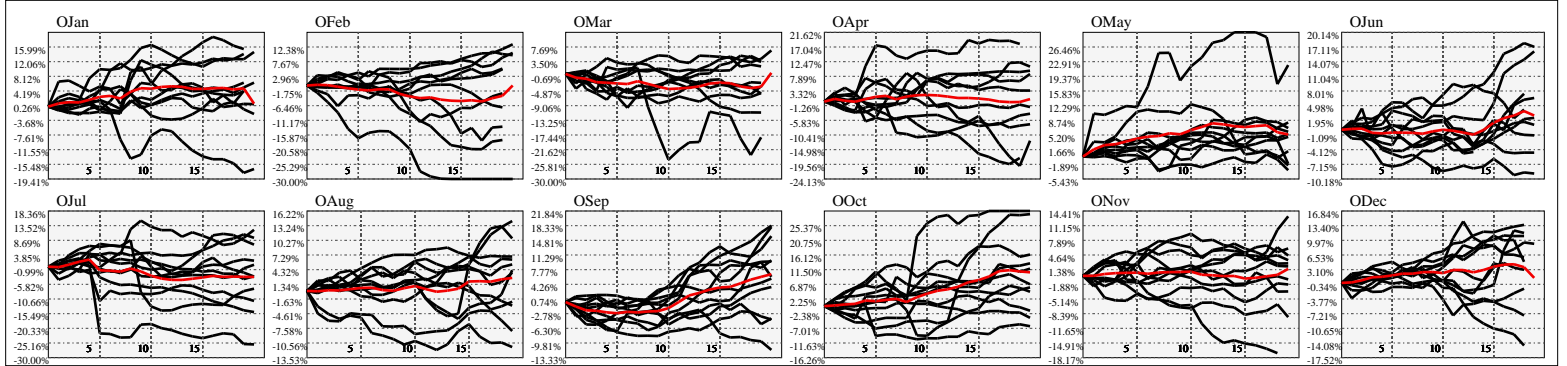
Hi-Resolution Calendrical Harmonics..Range 2020-01-17 to 2020-01-31



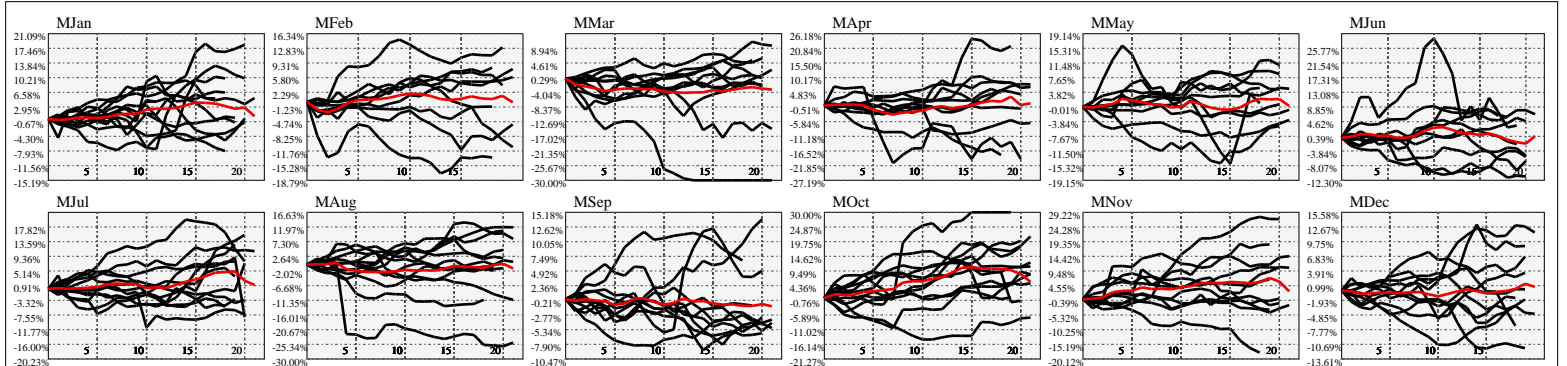
Calendrical Harmonics Standard..



Calendrical Harmonics 3rd Friday..



Calendrical Harmonics Moon Aligned..



Calendrical Harmonics Weekly w/ Day Of Week Alignments..

