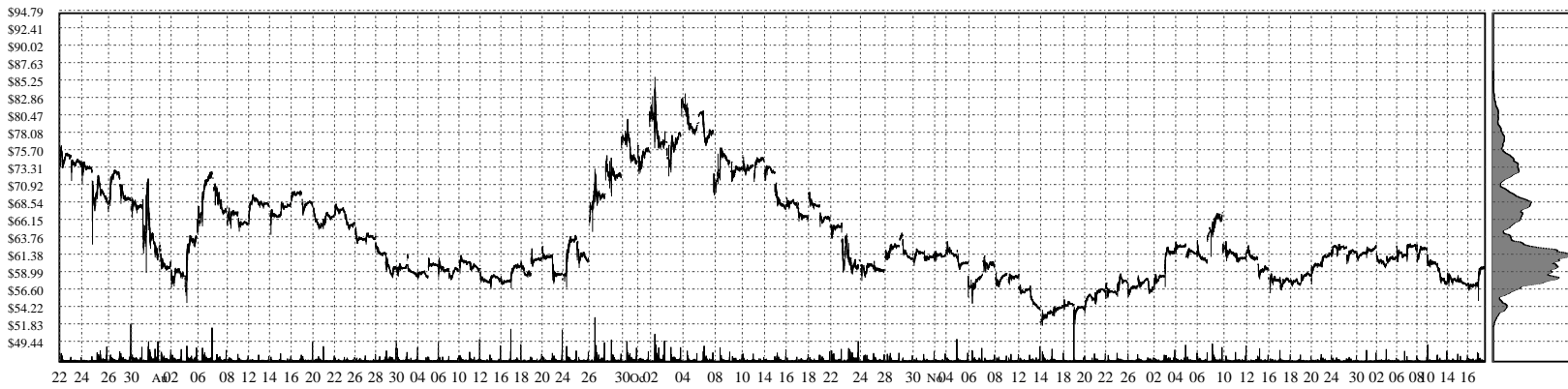
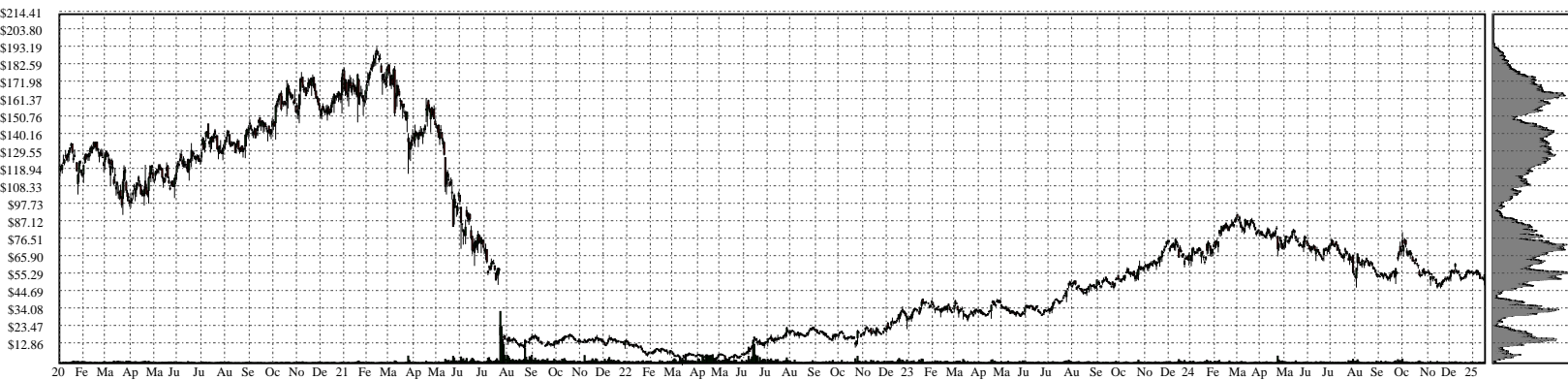
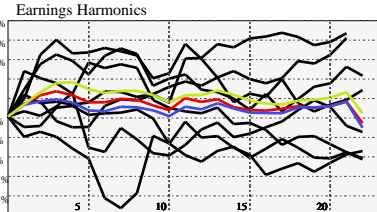


# EDU- New Oriental Education and Technology Gr

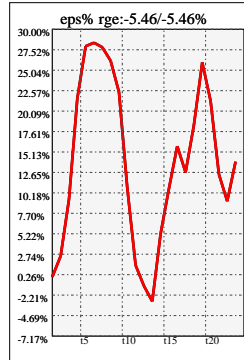


## Company Snapshot: EDU

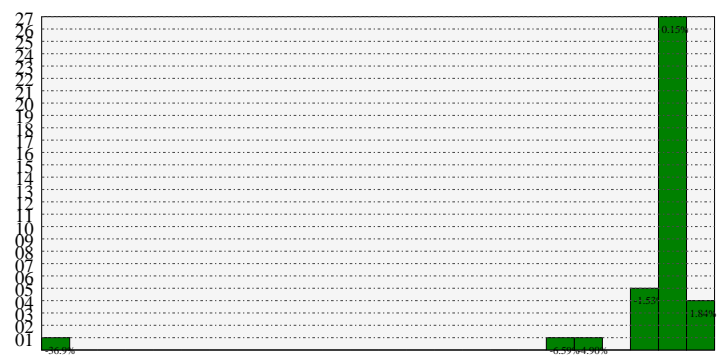
Date	Rev. \$\$	Profit R:	Gross Profit	ebitda	ebitda R:	eps	eps%	Dbt. Exp	Dbt. R:	Net Inc.	Netl R:
2023-05-31	2.998B	0.53	1.588B	190.9M	0.06	1.09	2.9%	707.0k	0.00024	177.3M	0.0592
2022-05-31	3.105B	0.44	1.351B	-967.6M	-0.31	-6.89	-53.4%	4.050M	0.00130	-1.169B	-0.3764
2021-05-31	4.277B	0.52	2.240B	624.5M	0.15	1.41	1.3%	6.747M	0.00158	231.4M	0.0541
2020-05-31	3.579B	0.56	1.990B	417.5M	0.12	2.61	2.2%	4.627M	0.00129	413.3M	0.1155
2019-05-31	3.096B	0.56	1.720B	402.9M	0.13	1.5		1.615M	0.00052	238.1M	0.0769
2018-05-31	2.447B	0.56	1.382B	263.0M	0.11	1.87				296.1M	0.1210
2017-05-31	1.800B	0.58	1.050B	262.1M	0.15	1.74				274.5M	0.1525
2016-05-31	1.478B	0.58	864.0M	191.3M	0.13	1.43				224.9M	0.1521



## Earnings Quadrature: Size[6]



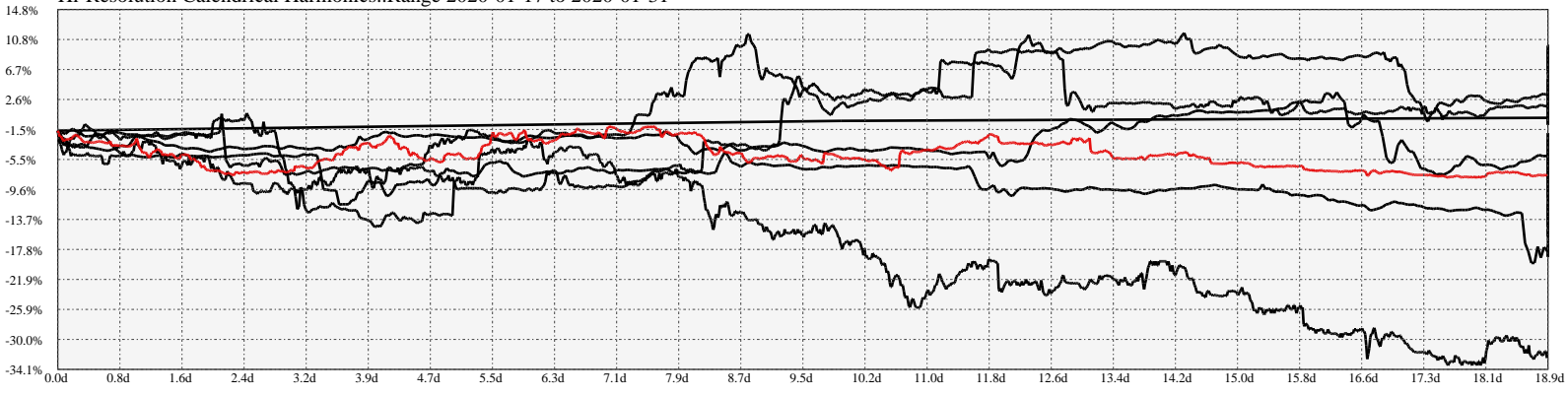
## Earnings Frequency Spectrum: -36.91% to 1.84%



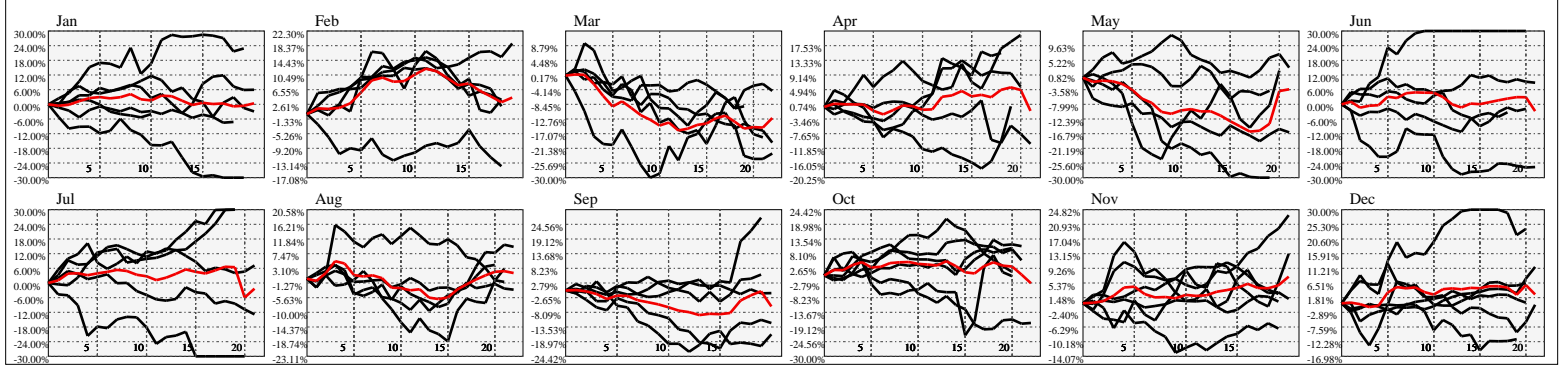
## Earnings Calendar As of: 2025-Jan-17

Date	days..	eps \$	Earnings Est.
2025-01-22	4		

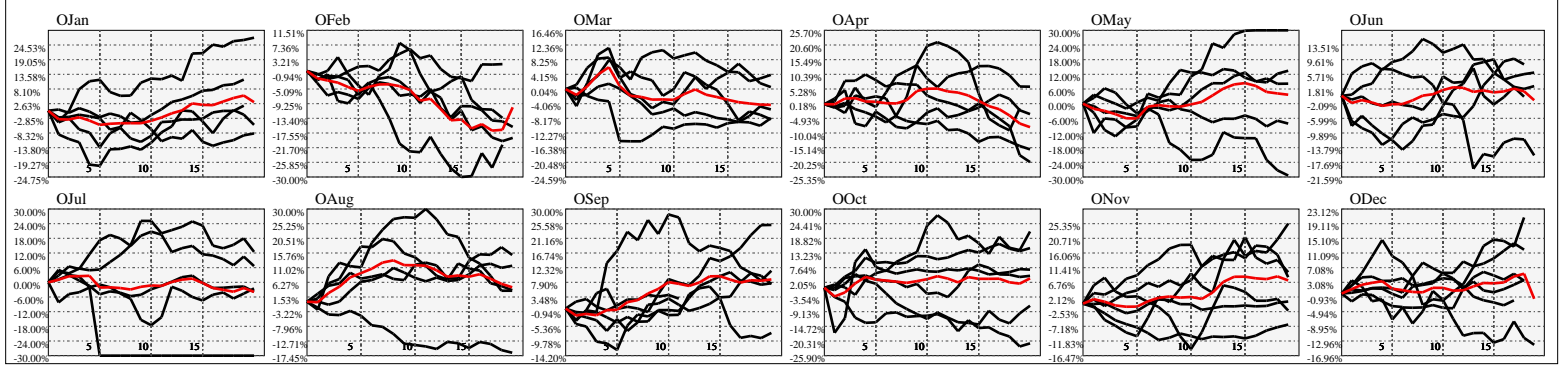
Hi-Resolution Calendrical Harmonics..Range 2020-01-17 to 2020-01-31



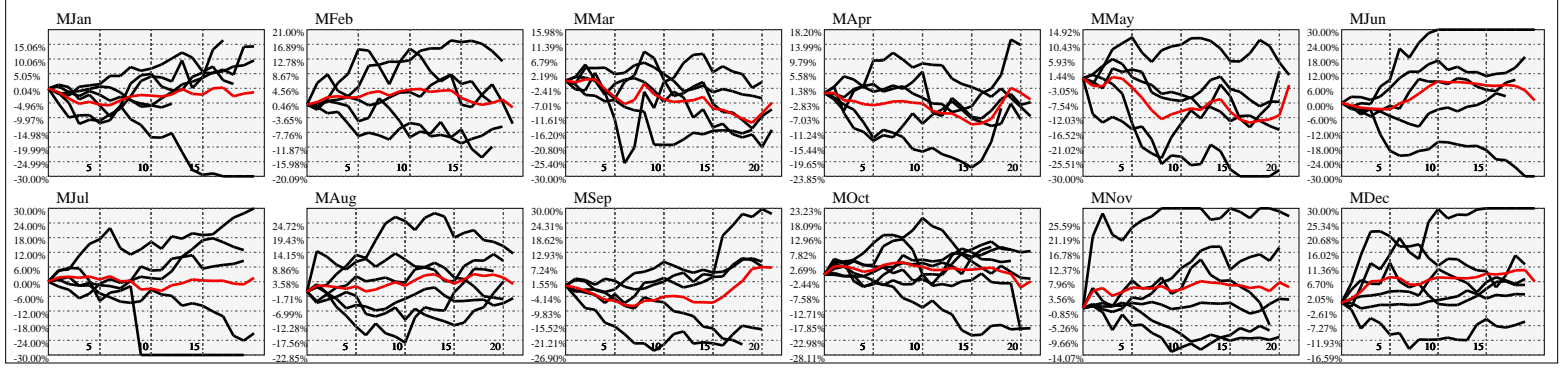
Calendrical Harmonics Standard..



Calendrical Harmonics 3rd Friday..



Calendrical Harmonics Moon Aligned..



Calendrical Harmonics Weekly w/ Day Of Week Alignments..

