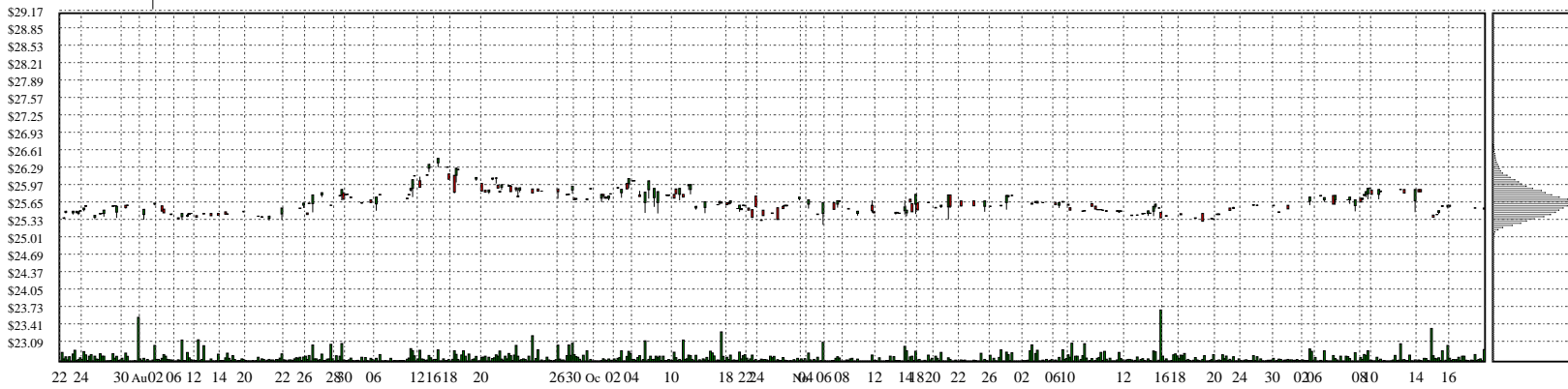
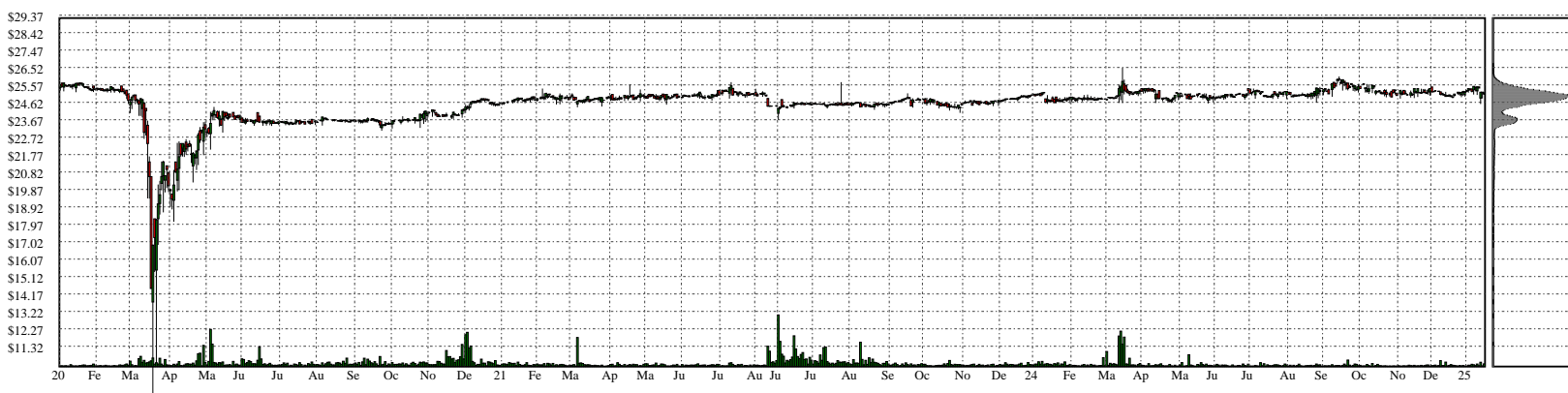


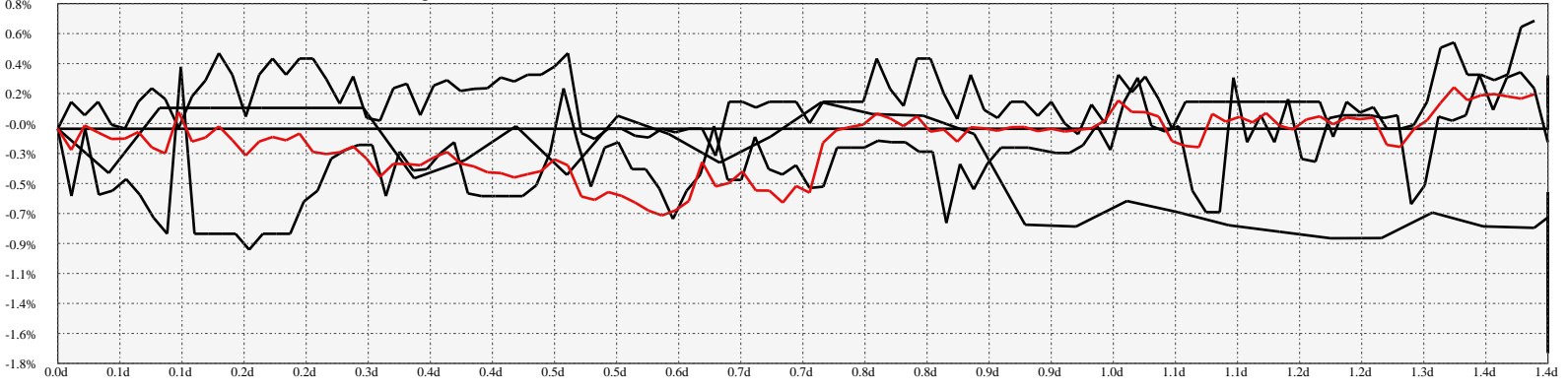
GAINL- Gladstone Investment Corporation 8.00% N



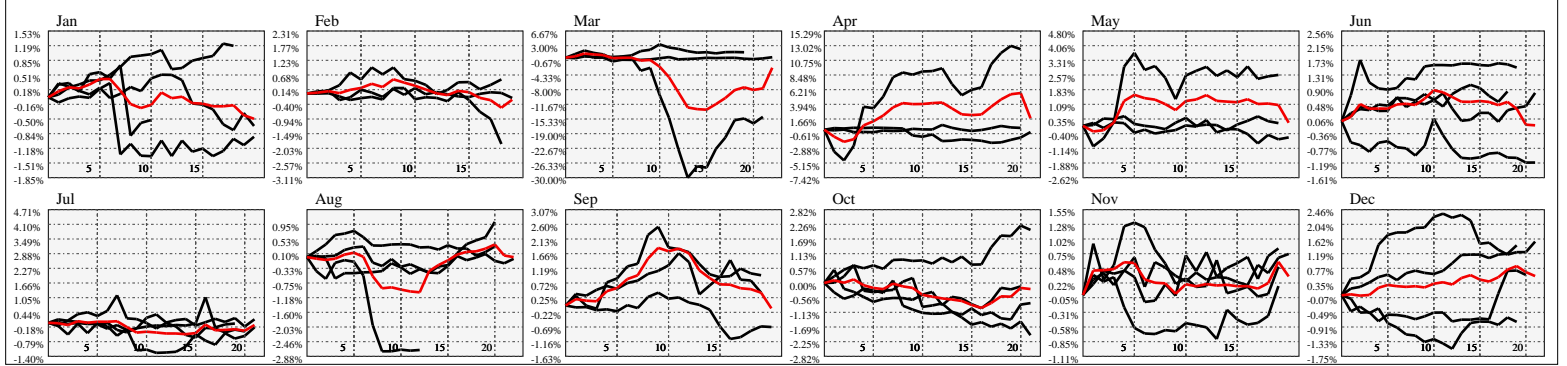
Company Snapshot: GAINL

Date	Rev. \$\$	Profit R:	Gross Profit	ebitda	ebitda R:	eps	eps%	Dbt. Exp	Dbt. R:	Net Inc.	Netl R:
2023-03-31	32.7M	1.00	32.7M	51.4M	1.57	1.07	4.3%	15.9M	0.48620	35.5M	1.0886
2022-03-31	99.1M	1.00	99.1M	118.6M	1.20	3.08	12.3%	13.1M	0.13190	105.5M	1.0638
2021-03-31	48.7M	1.00	48.7M	44.8M	0.92	1.28	5.0%	4.440M	0.09112	44.8M	0.9190
2020-03-31	8.006M	1.00	8.006M	3.026M	0.38	-0.53	-2.4%	3.958M	0.49438	-17.5M	-2.1851
2019-03-31	99.2M	1.00	99.2M	101.7M	1.03	2.49		6.147M	0.06195	81.6M	0.8222
2018-03-31	65.3M	1.10	71.6M	65.2M	1.00	1.88		4.034M	0.06175	60.7M	0.9290
2017-03-31	49.4M	1.13	49.4M	48.4M	0.98	1.48		3.540M	0.07167	44.8M	0.9062
2016-03-31	29.1M	1.23	29.1M	29.0M	1.00	0.82		4.154M	0.14256	24.9M	0.8530

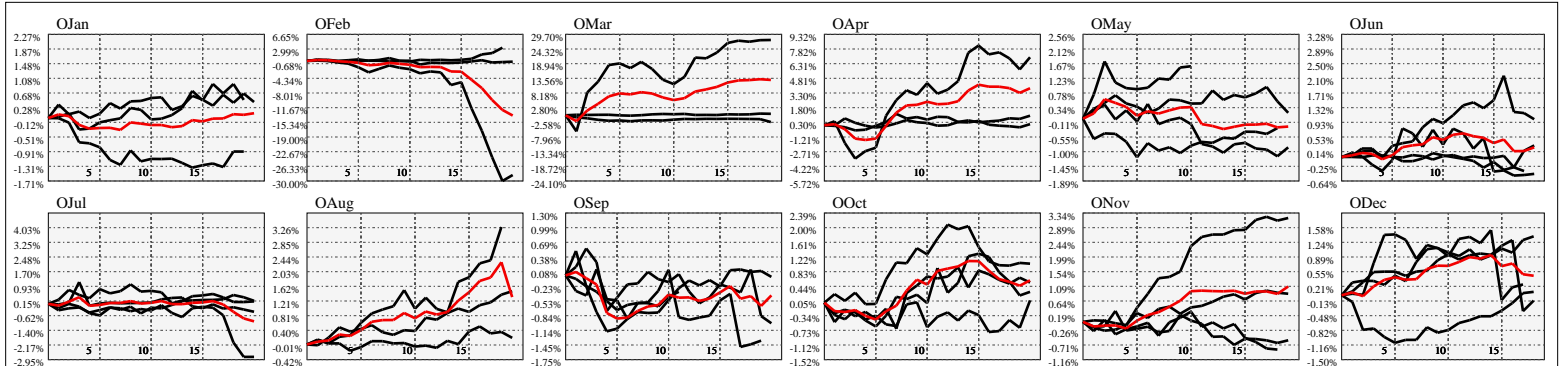
Hi-Resolution Calendrical Harmonics..Range 2020-01-17 to 2020-01-31



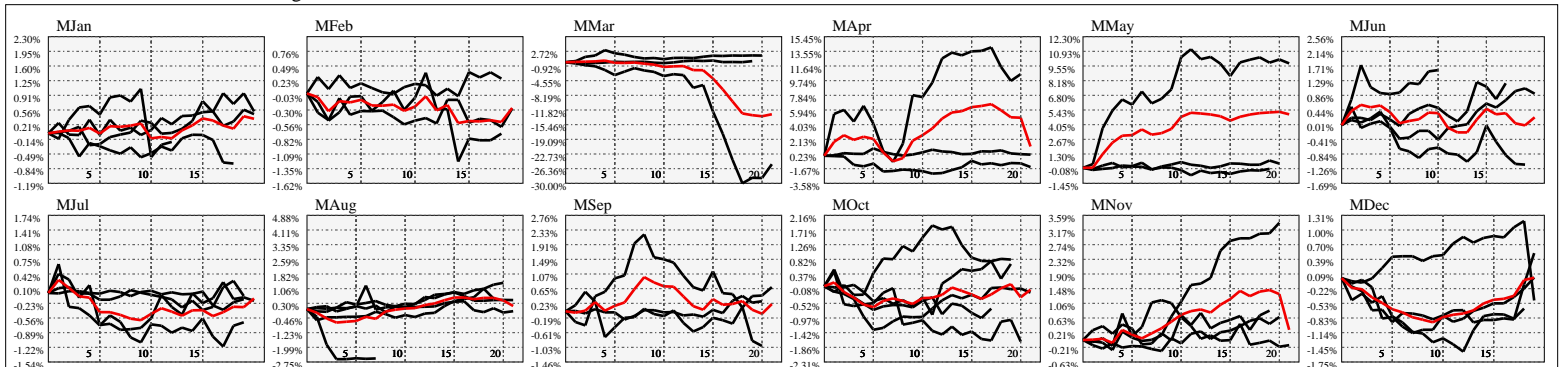
Calendrical Harmonics Standard..



Calendrical Harmonics 3rd Friday..



Calendrical Harmonics Moon Aligned..



Calendrical Harmonics Weekly w/ Day Of Week Alignments..

