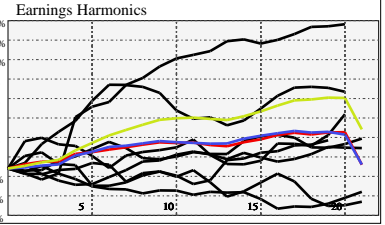
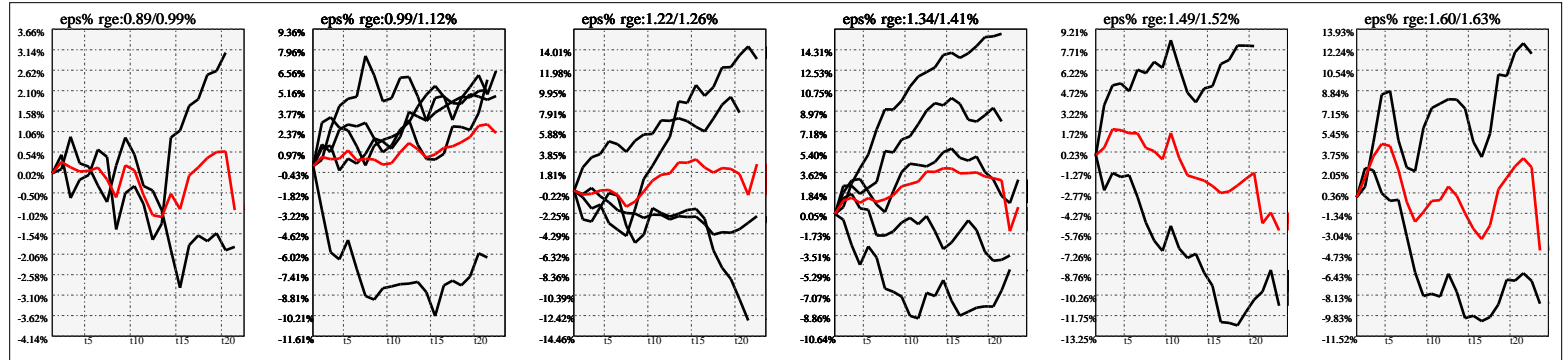


Company Snapshot: GWW

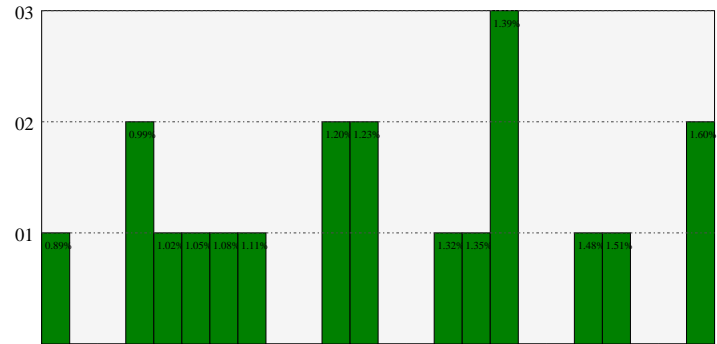
Date	Rev. \$\$	Profit R:	Gross Profit	ebitda	ebitda R:	eps	eps%	Dbt. Exp	Dbt. R:	Net Inc.	Netl R:
2023-12-31	16.48B	0.39	6.496B	2.779B	0.17	36.65	4.4%	93.0M	0.00564	1.829B	0.1110
2022-12-31	15.23B	0.38	5.849B	2.456B	0.16	30.22	5.4%	93.0M	0.00611	1.547B	0.1016
2021-12-31	13.02B	0.36	4.720B	1.757B	0.13	19.94	3.9%	87.0M	0.00668	1.043B	0.0801
2020-12-31	11.80B	0.36	4.238B	1.222B	0.10	12.88	3.2%	93.0M	0.00788	695.0M	0.0589
2019-12-31	11.49B	0.38	4.397B	1.517B	0.13	15.52	4.6%	79.0M	0.00688	849.0M	0.0739
2018-12-31	11.22B	0.39	4.348B	1.426B	0.13	13.83		88.0M	0.00784	782.0M	0.0697
2017-12-31	10.42B	0.39	4.098B	1.280B	0.12	10.07		80.5M	0.00772	585.7M	0.0562
2016-12-31	10.14B	0.41	4.115B	1.334B	0.13	9.94		66.3M	0.00654	605.9M	0.0598



Earnings Quadrature: Size[6]



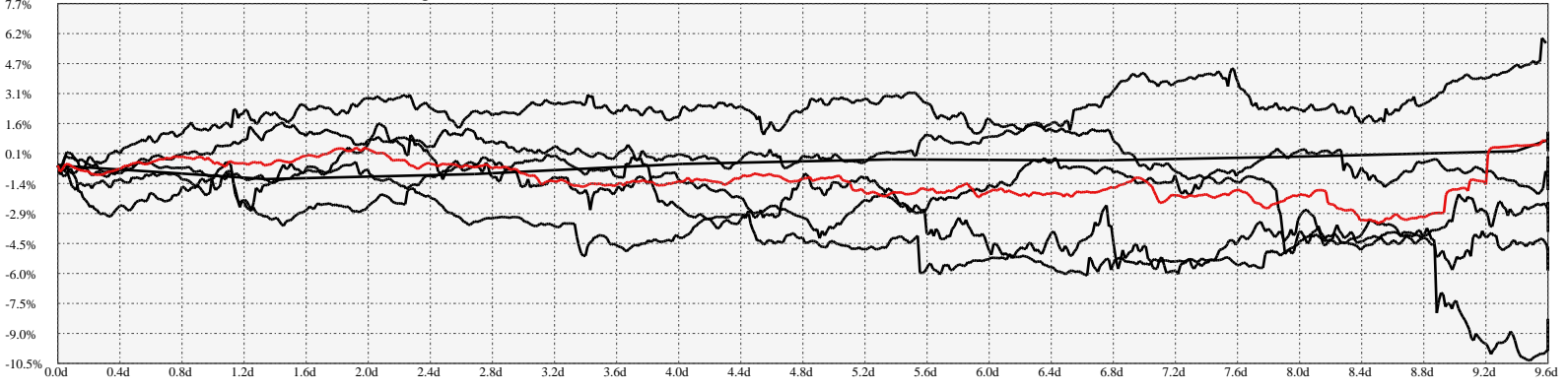
Earnings Frequency Spectrum: 0.89% to 1.60%



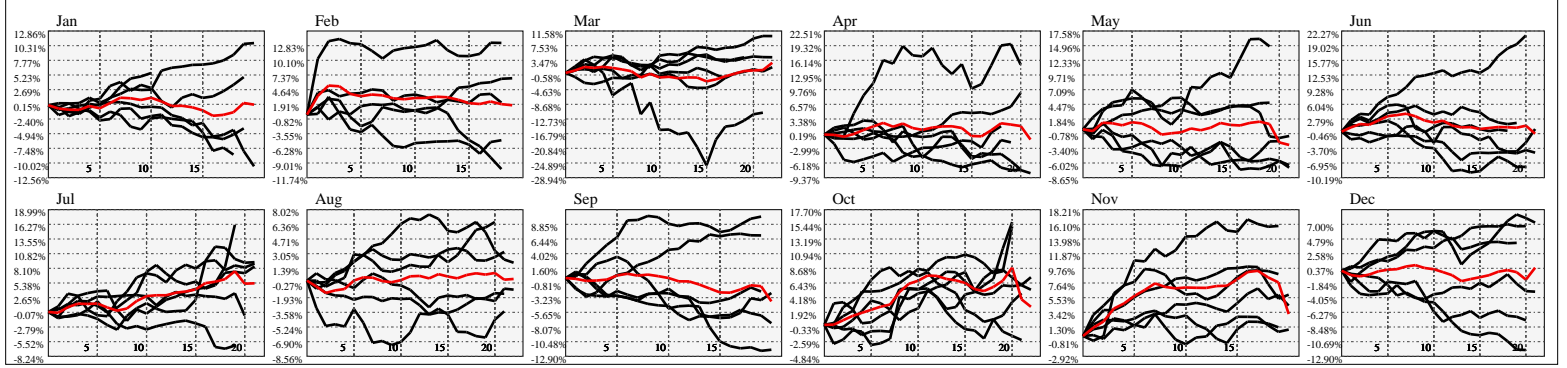
Earnings Calendar As of: 2025-Jan-17

Date	days..	eps \$	Earnings Est.
2025-01-31	13		

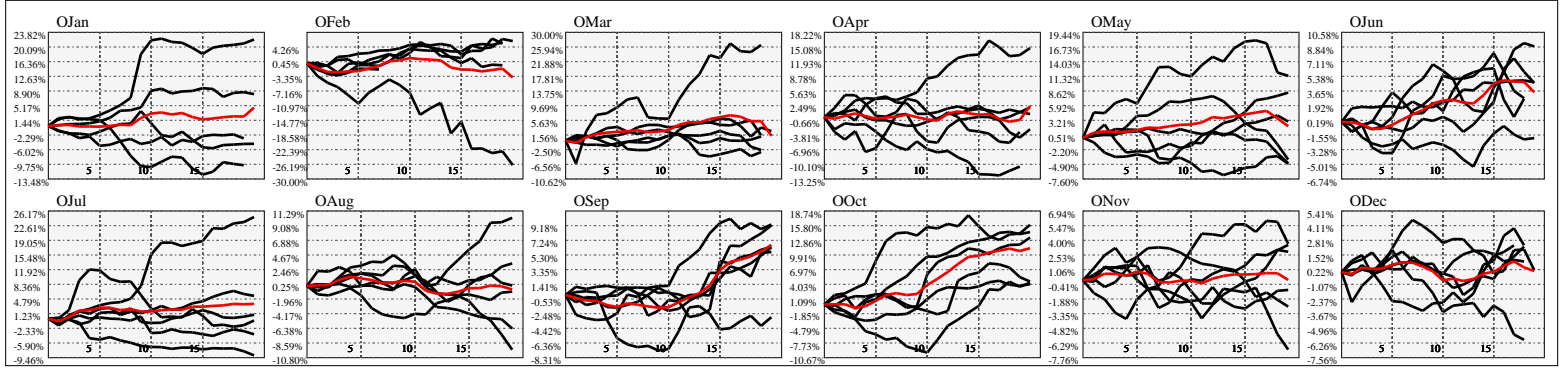
Hi-Resolution Calendrical Harmonics..Range 2020-01-17 to 2020-01-31



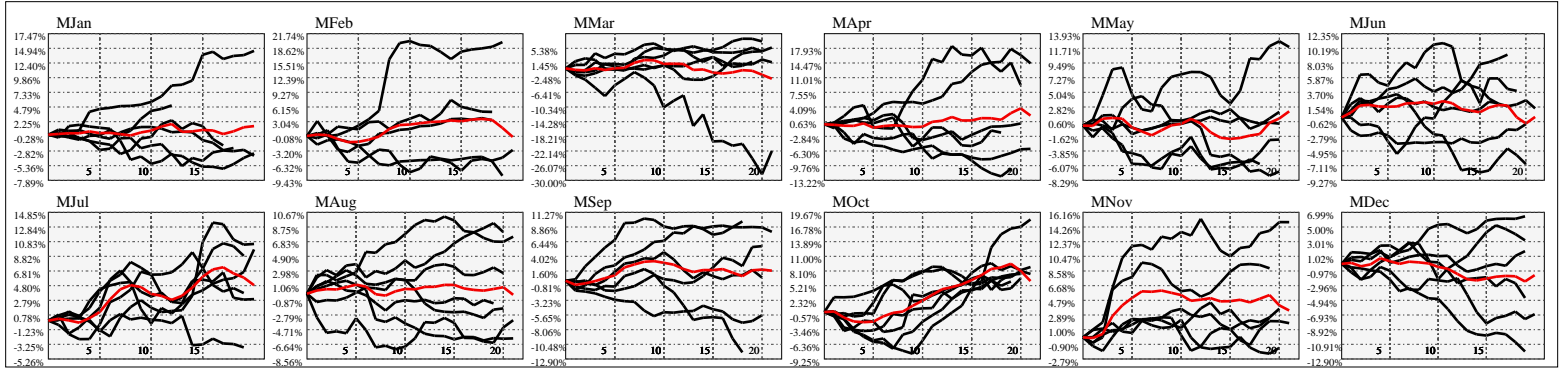
Calendrical Harmonics Standard..



Calendrical Harmonics 3rd Friday..



Calendrical Harmonics Moon Aligned..



Calendrical Harmonics Weekly w/ Day Of Week Alignments..

