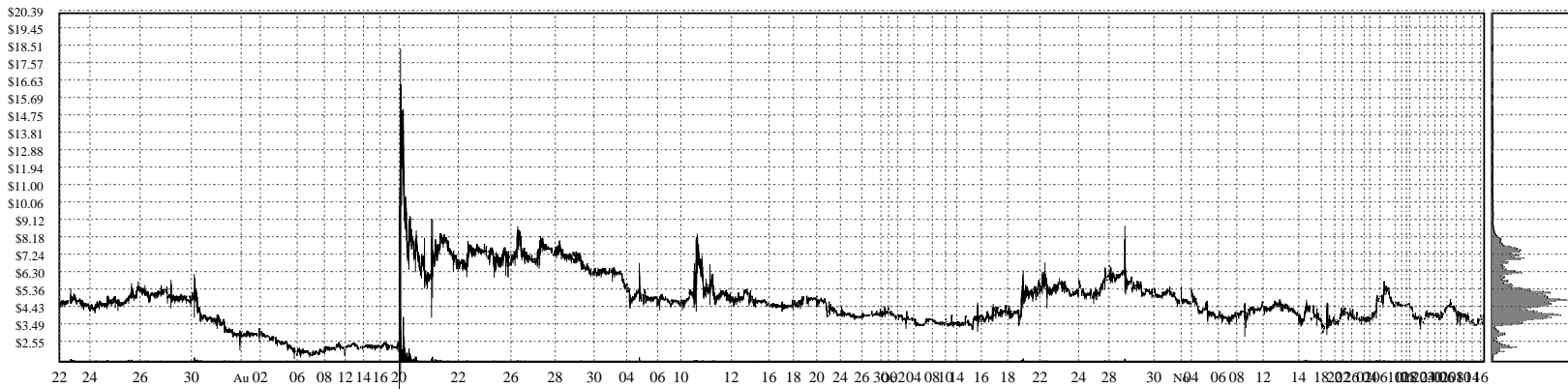
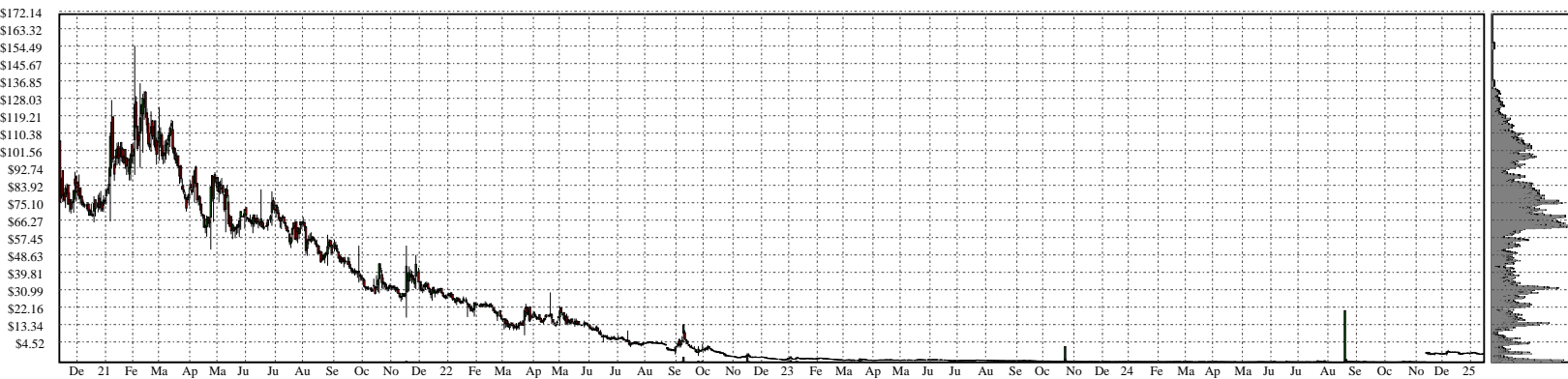
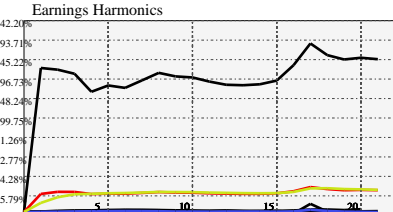


INM- InMed Pharmaceuticals Inc. Common Shares

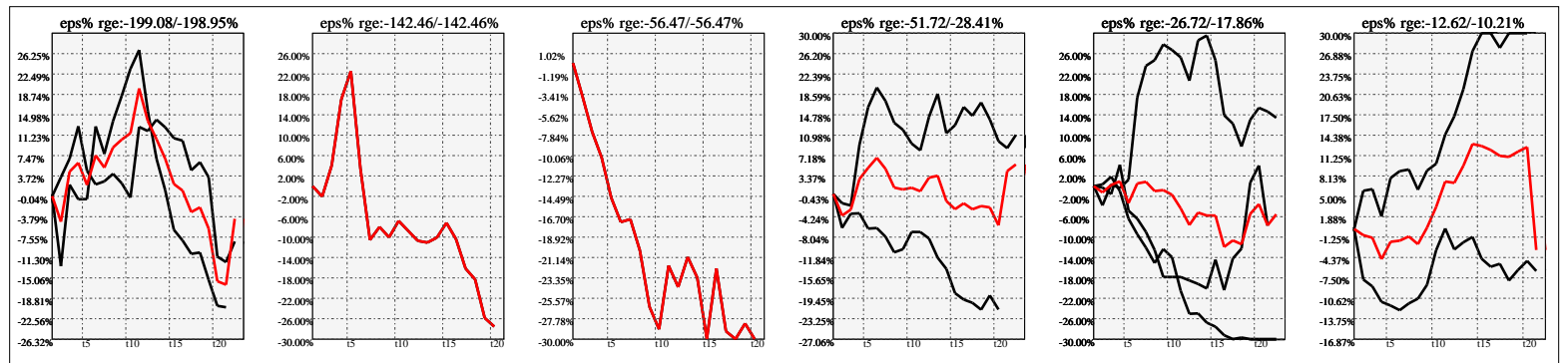


Company Snapshot: INM

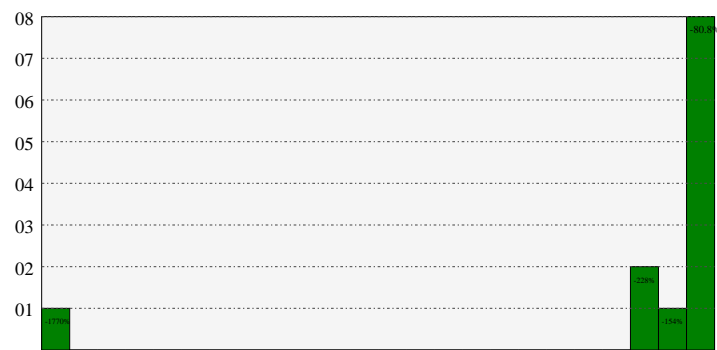
Date	Rev. \$\$	Profit R:	Gross Profit	ebitda	ebitda R:	eps	eps%	Dbt. Exp	Dbt. R:	Net Inc.	Netl R:
2023-06-30	4.136M	0.34	1.403M	-7.735M	-1.87	-3.25	-357.1%			-7.948M	-1.9218
2022-06-30	1.089M	0.50	543.5k	-13.2M	-12.10	-41.74	-340.9%	96.09k	0.08820	-23.4M	-21.4868
2021-06-30				-9.801M		-39.3	-47.9%	360.4k		-10.6M	
2020-06-30				-8.580M		-41.66		18.62k		-8.700M	
2019-06-30				-10.3M		-47.49				-9.835M	
2018-06-30				-6.457M		-49.35		67.17k		-6.479M	
2017-06-30				-3.364M		-41.26		495.17		-3.440M	
2016-06-30				-1.770M		-32.58		47.92		-1.837M	



Earnings Quadrature: Size[6]



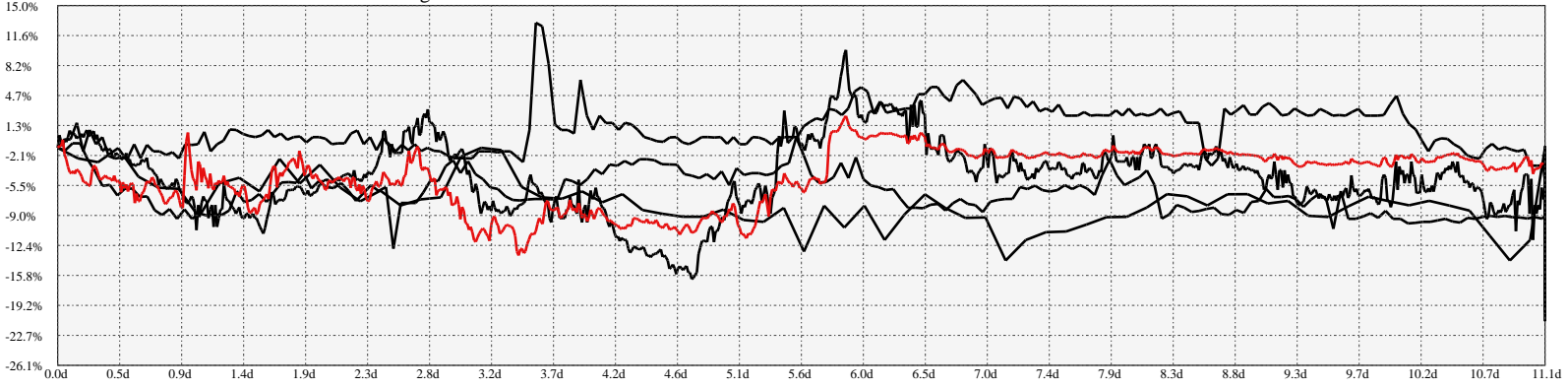
Earnings Frequency Spectrum: -1769.86% to -80.78%



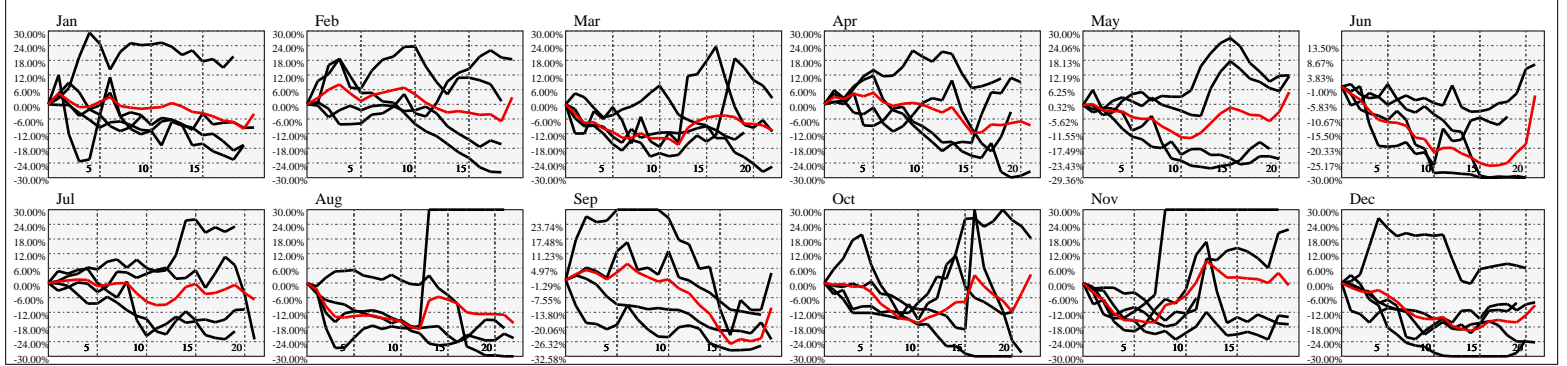
Earnings Calendar As of: 2025-Jan-17

Date	days..	eps \$	Earnings Est.

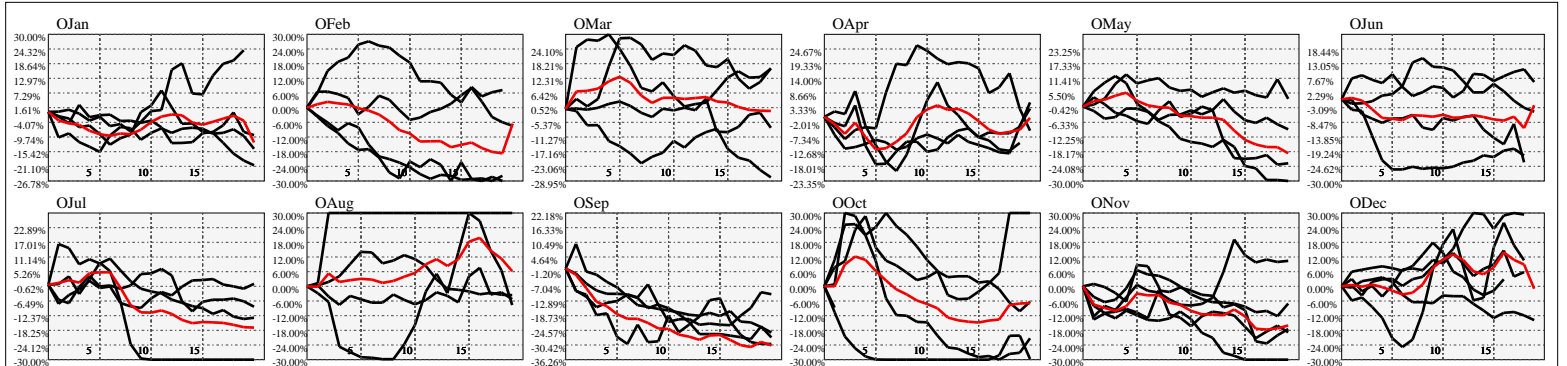
Hi-Resolution Calendrical Harmonics..Range 2021-01-15 to 2021-01-29



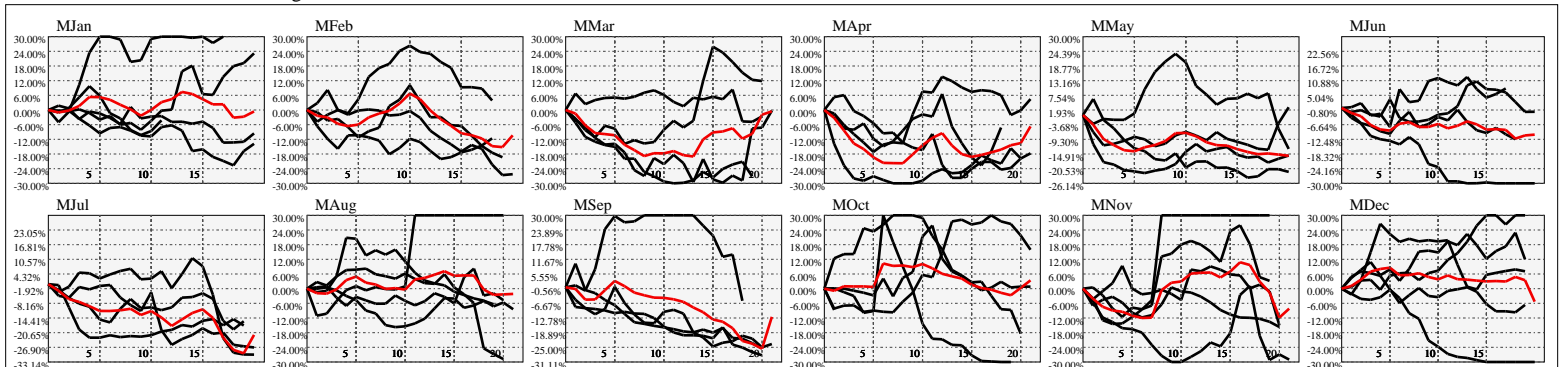
Calendrical Harmonics Standard..



Calendrical Harmonics 3rd Friday..



Calendrical Harmonics Moon Aligned..



Calendrical Harmonics Weekly w/ Day Of Week Alignments..

