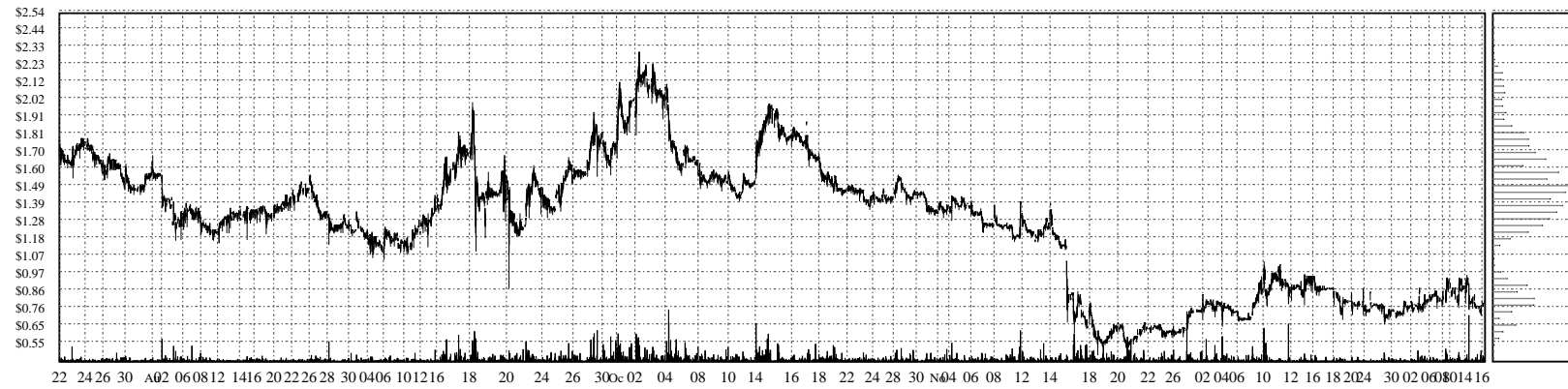
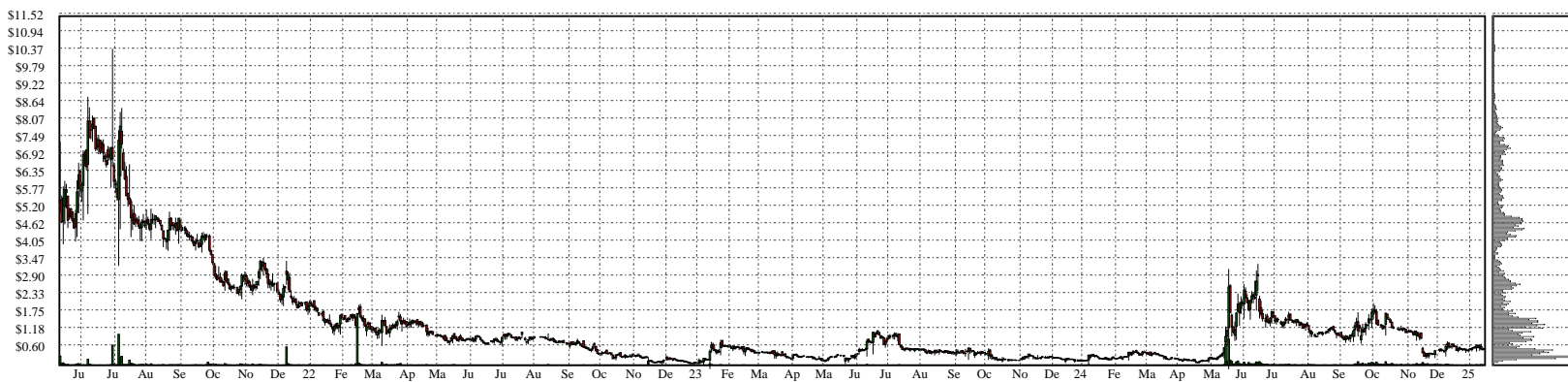
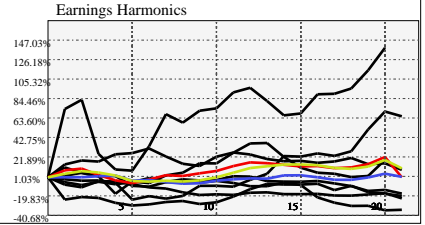


IPW- iPower, Inc. Common Stock

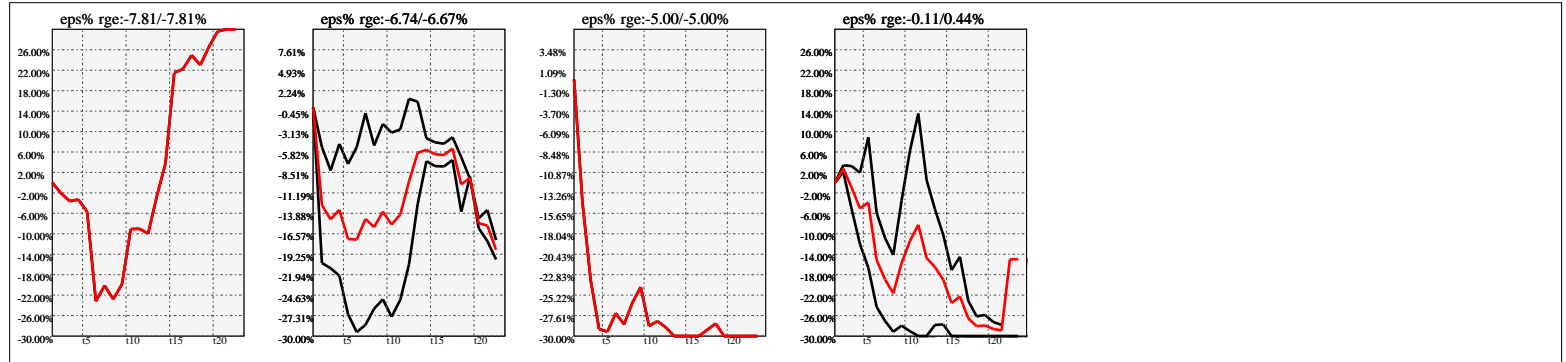


Company Snapshot: IPW

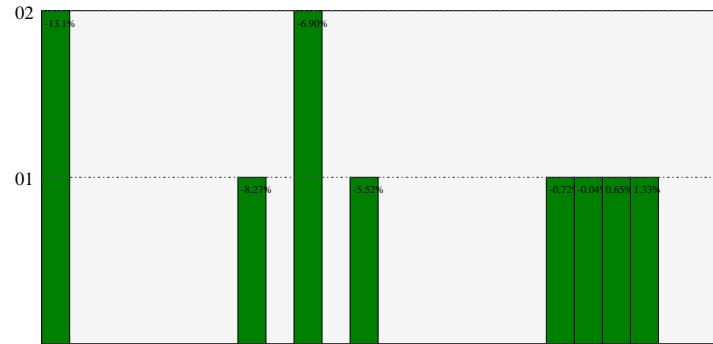
Date	Rev. \$\$	Profit R:	Gross Profit	ebitda	ebitda R:	eps	eps%	Dbt. Exp	Dbt. R:	Net Inc.	Netl R:
2023-06-30	88.9M	0.39	34.8M	-10.5M	-0.12	-0.4	-33.6%	1.066M	0.01199	-12.0M	-0.1346
2022-06-30	79.4M	0.42	33.2M	2.319M	0.03	0.05	4.7%	-538.2k	-0.00678	1.518M	0.0191
2021-06-30	54.1M	0.42	22.8M	2.785M	0.05	-0.0367	-0.5%	-153.8k	-0.00284	-775.7k	-0.0143
2020-06-30	39.9M	0.38	15.1M	2.908M	0.07	0.092	1.6%			1.987M	0.0498
2019-06-30	22.8M	0.34	7.876M	834.7k	0.04	0.0247	0.4%	110.8k	0.00485	528.4k	0.0231



Earnings Quadrature: Size[6]



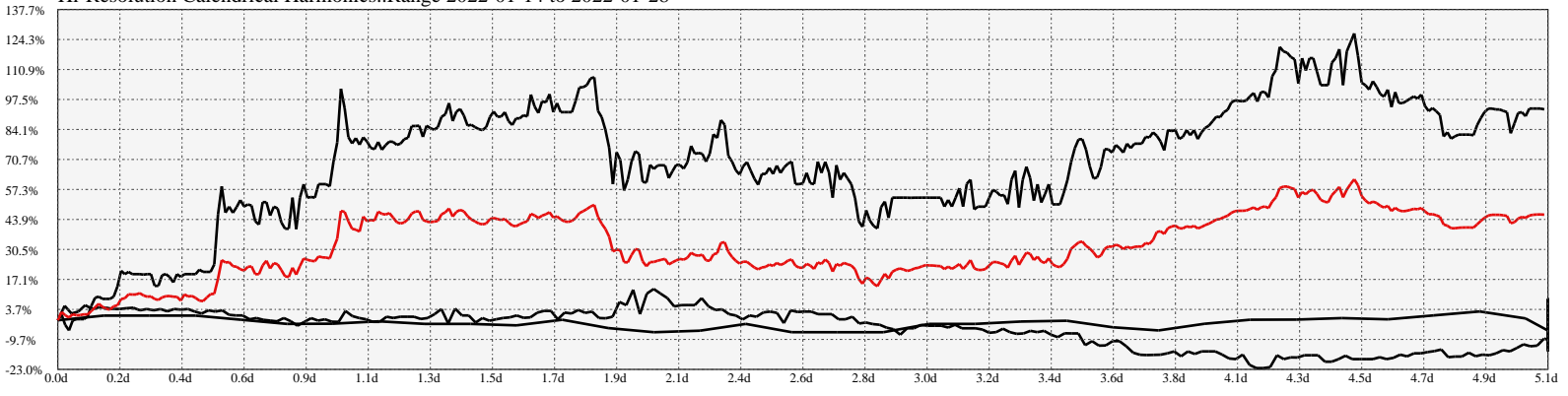
Earnings Frequency Spectrum: -13.07% to 2.70%



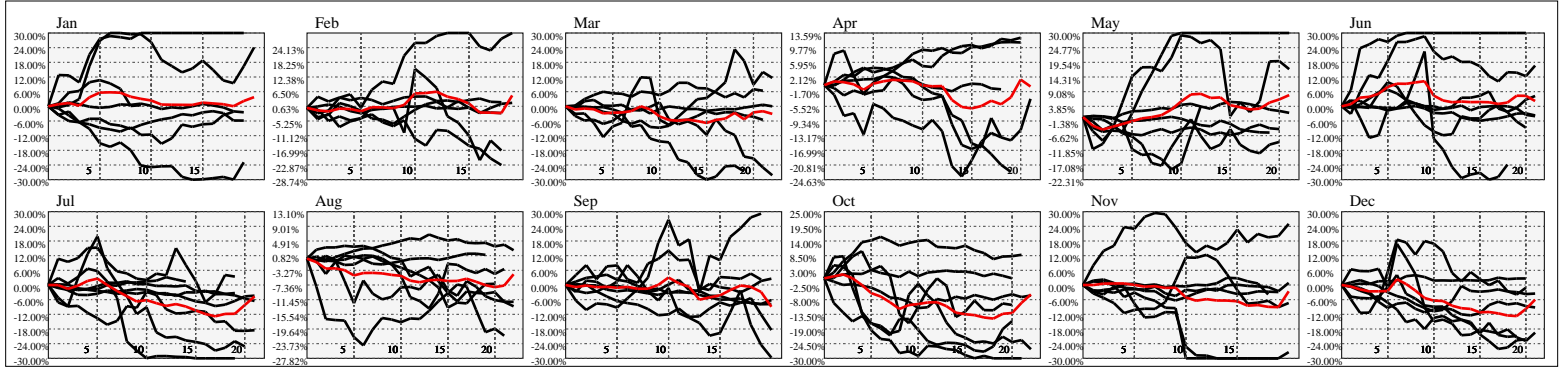
Earnings Calendar As of: 2025-Jan-17

Date	days..	eps \$	Earnings Est.

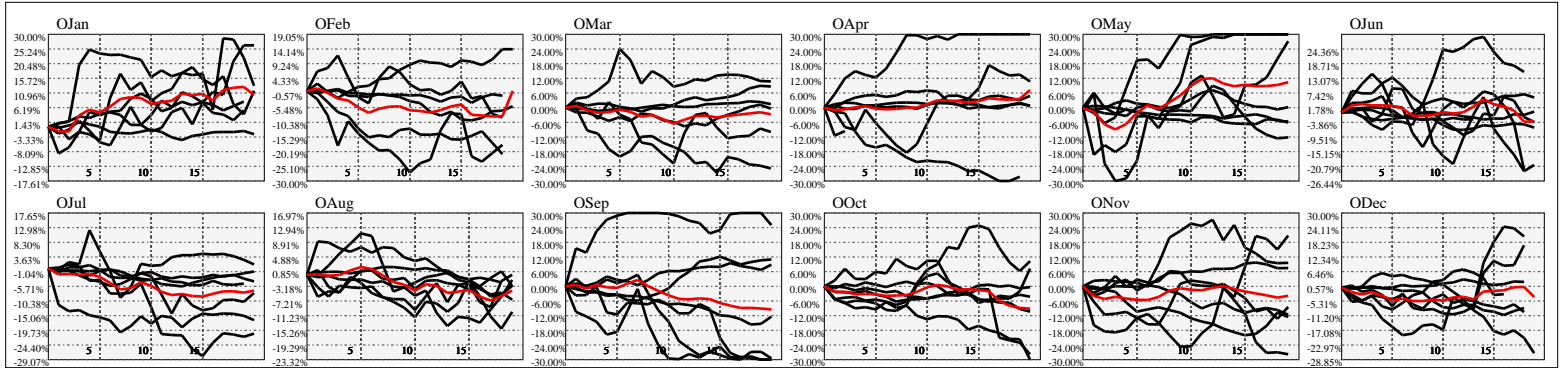
Hi-Resolution Calendrical Harmonics..Range 2022-01-14 to 2022-01-28



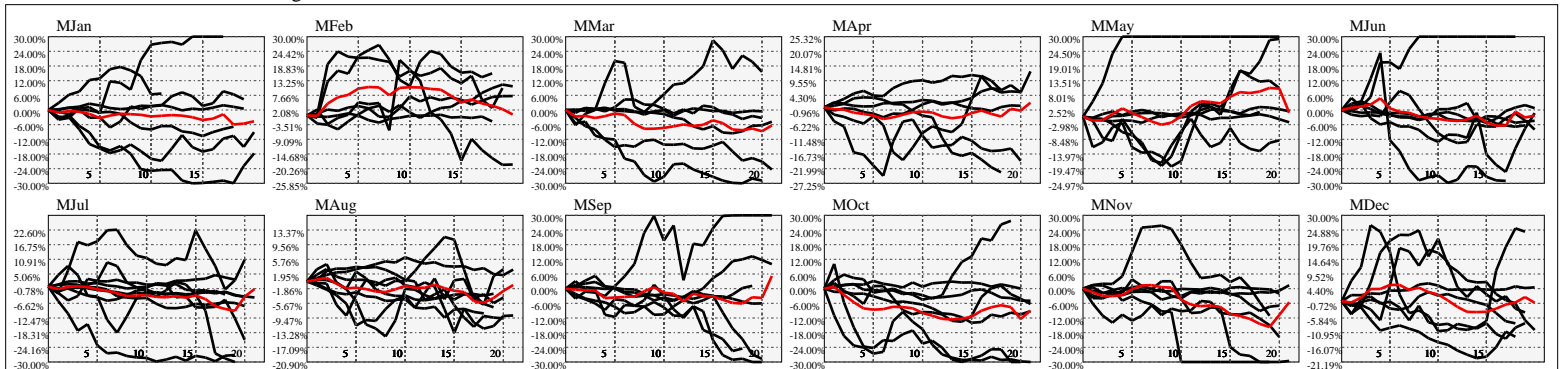
Calendrical Harmonics Standard..



Calendrical Harmonics 3rd Friday..



Calendrical Harmonics Moon Aligned..



Calendrical Harmonics Weekly w/ Day Of Week Alignments..

