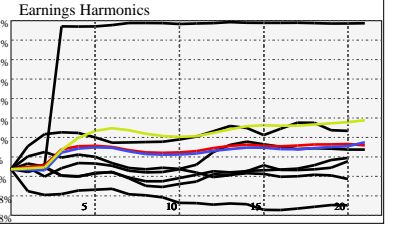
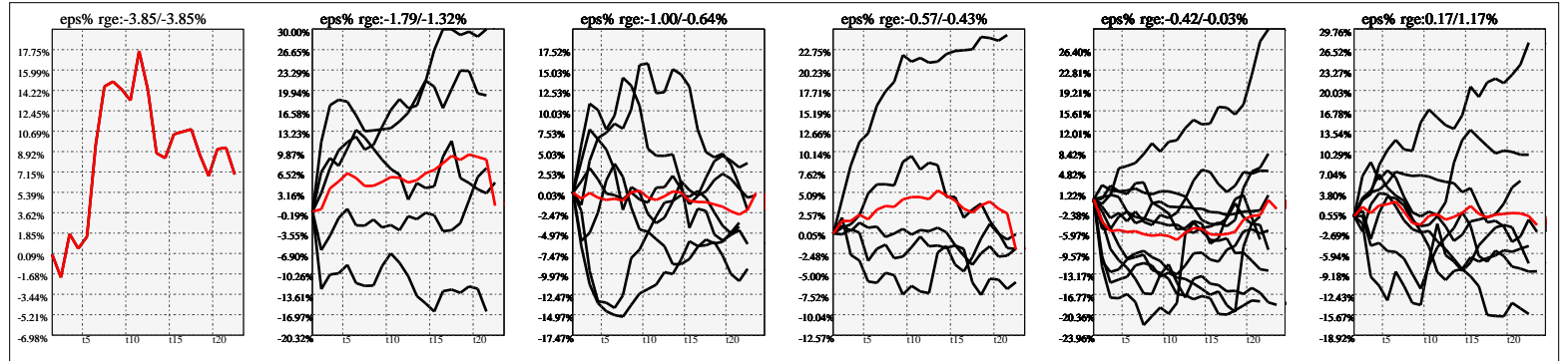


Company Snapshot: ITI

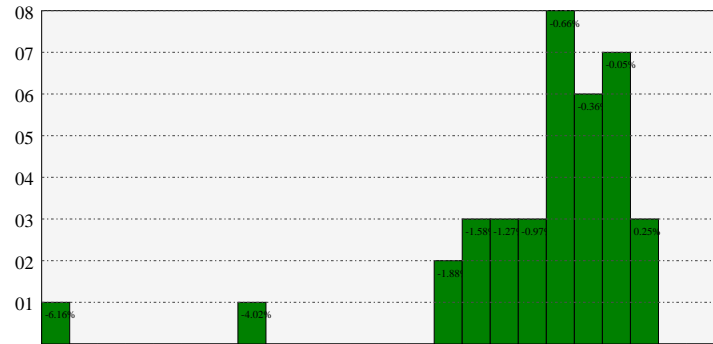
Date	Rev. \$\$	Profit R:	Gross Profit	ebitda	ebitda R:	eps	eps%	Dbt. Exp	Dbt. R:	Net Inc.	Netl R:
2023-03-31	156.1M	0.27	42.0M	-10.5M	-0.07	-0.35	-7.8%	1.619M	0.01037	-14.9M	-0.0952
2022-03-31	133.6M	0.35	47.4M	-4.021M	-0.03	-0.16	-5.3%	-14.00k	-0.00010	-6.900M	-0.0517
2021-03-31	117.1M	0.40	46.9M	3.181M	0.03	0.0119	0.2%			491.0k	0.0042
2020-03-31	114.1M	0.42	47.8M	-5.219M	-0.05	-0.14	-4.2%			-5.610M	-0.0492
2019-03-31	99.1M	0.39	38.6M	-7.684M	-0.08	-0.23	-5.5%			-7.816M	-0.0789
2018-03-31	103.7M	0.38	39.8M	-5.514M	-0.05	-0.11	-2.3%			-3.526M	-0.0340
2017-03-31	96.0M	0.39	37.4M	-620.0k	-0.01	-0.15	-2.8%			-4.826M	-0.0503
2016-03-31	77.7M	0.39	30.7M	-3.110M	-0.04	-0.38	-15.2%			-12.3M	-0.1585



Earnings Quadrature: Size[6]



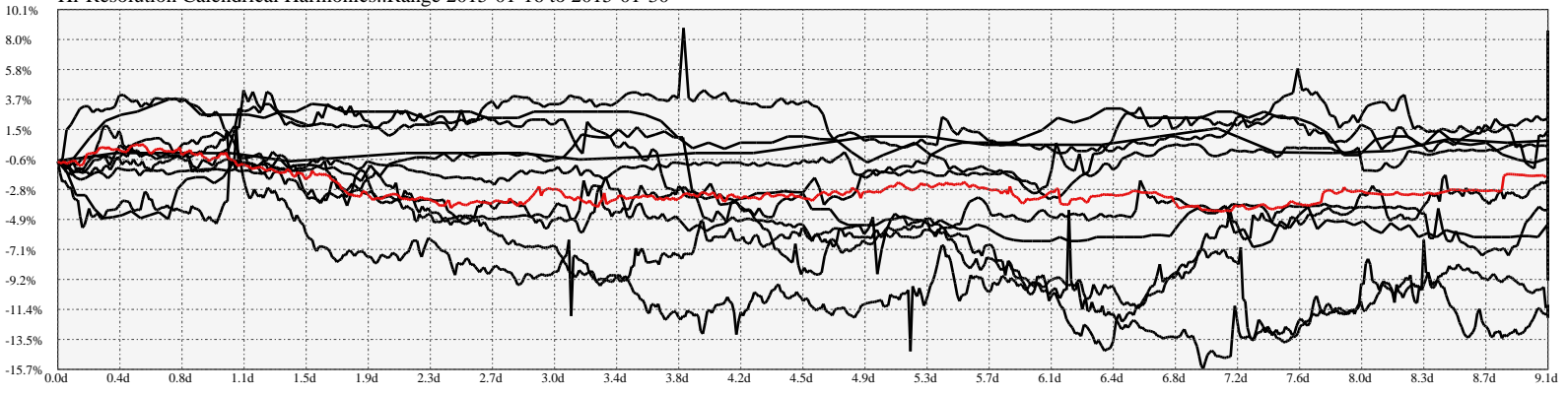
Earnings Frequency Spectrum: -6.16% to 0.87%



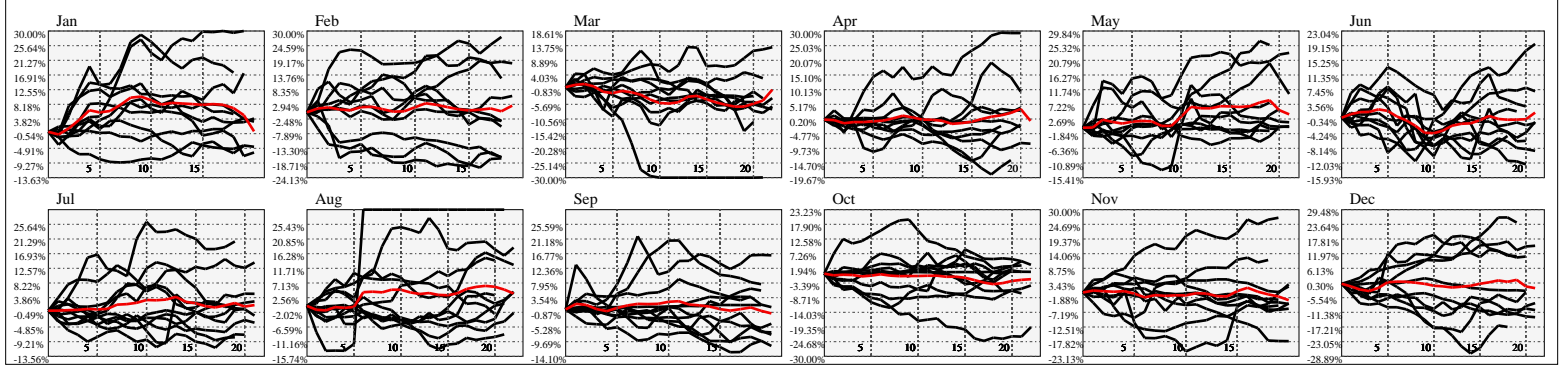
Earnings Calendar As of: 2025-Jan-17

Date	days..	eps \$	Earnings Est.

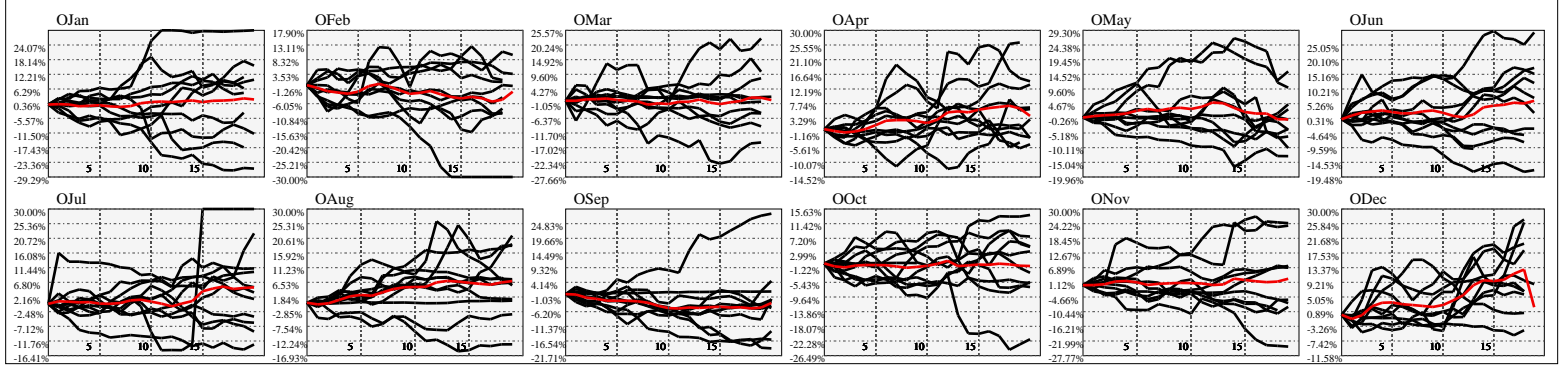
Hi-Resolution Calendrical Harmonics..Range 2015-01-16 to 2015-01-30



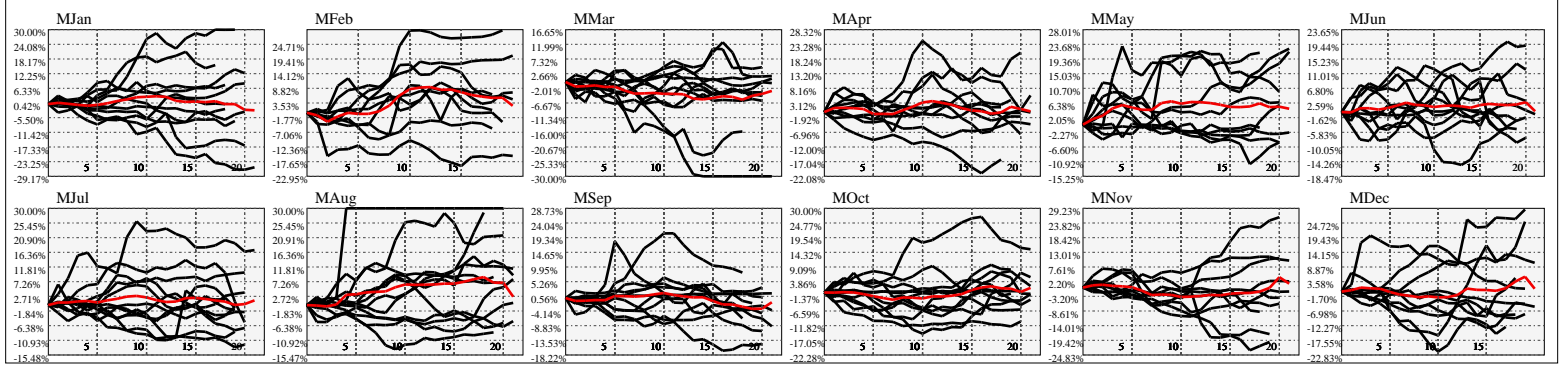
Calendrical Harmonics Standard..



Calendrical Harmonics 3rd Friday..



Calendrical Harmonics Moon Aligned..



Calendrical Harmonics Weekly w/ Day Of Week Alignments..

