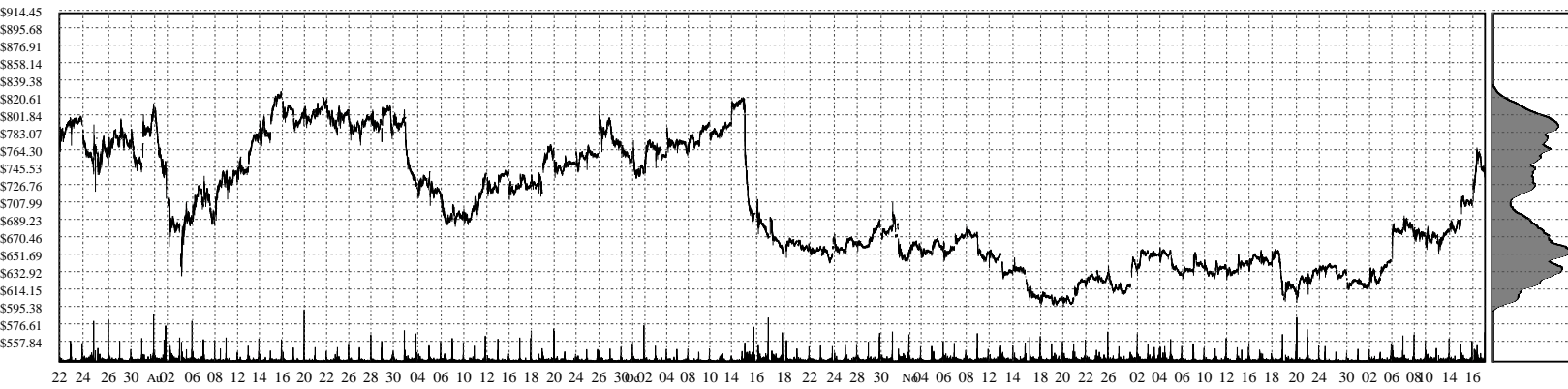
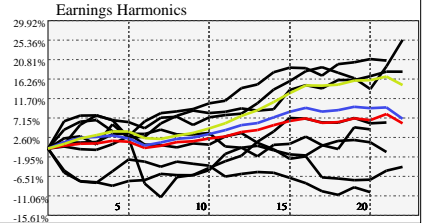


KLAC- KLA Corporation Common Stock

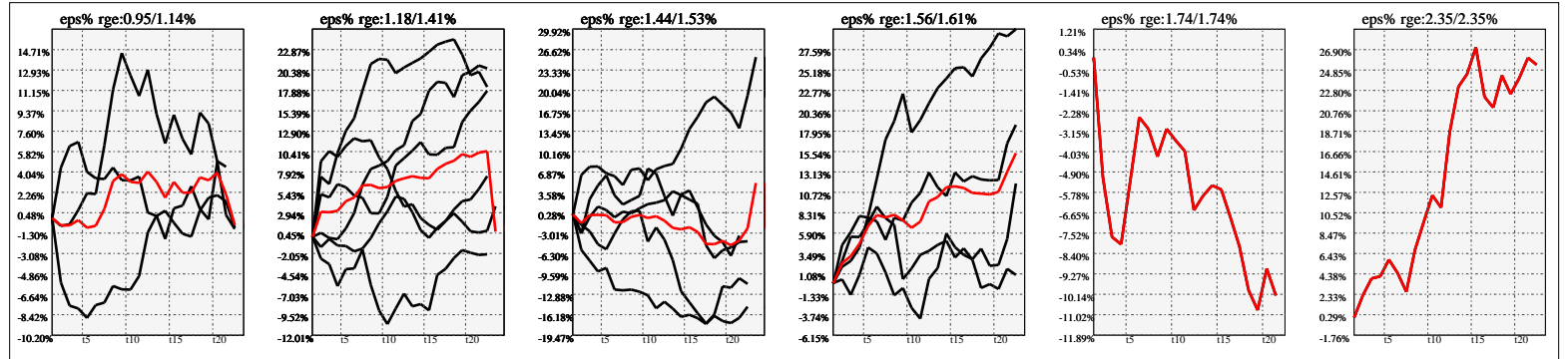


Company Snapshot: KLAC

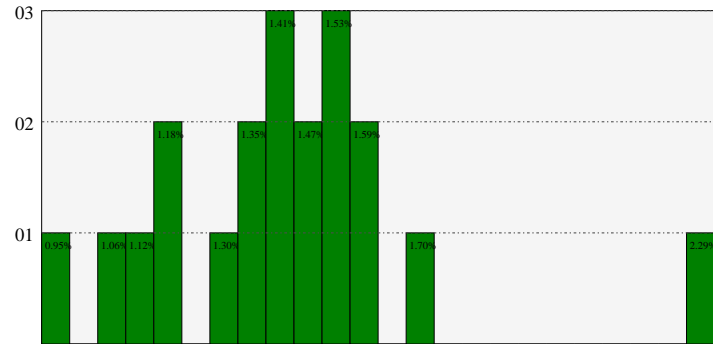
Date	Rev. \$\$	Profit R:	Gross Profit	ebitda	ebitda R:	eps	eps%	Dbt. Exp	Dbt. R:	Net Inc.	Netl R:
2023-06-30	10.50B	0.60	6.278B	4.204B	0.40	24.29	5.0%	296.9M	0.02829	3.387B	0.3227
2022-06-30	9.212B	0.61	5.619B	3.750B	0.41	22.07	7.0%	160.3M	0.01741	3.322B	0.3606
2021-06-30	6.919B	0.60	4.147B	2.851B	0.41	13.49	4.2%	157.3M	0.02274	2.078B	0.3004
2020-06-30	5.806B	0.58	3.357B	2.104B	0.36	7.76	4.1%	160.3M	0.02760	1.217B	0.2096
2019-06-30	4.569B	0.59	2.700B	1.389B	0.30	7.53	6.2%	93.1M	0.02039	1.176B	0.2573
2018-06-30	4.037B	0.64	2.589B	1.600B	0.40	5.1		81.3M	0.02013	802.3M	0.1987
2017-06-30	3.480B	0.63	2.192B	1.276B	0.37	5.92		103.0M	0.02960	926.1M	0.2661
2016-06-30	2.984B	0.61	1.821B	960.4M	0.32	4.52		102.3M	0.03426	704.4M	0.2360



Earnings Quadrature: Size[6]



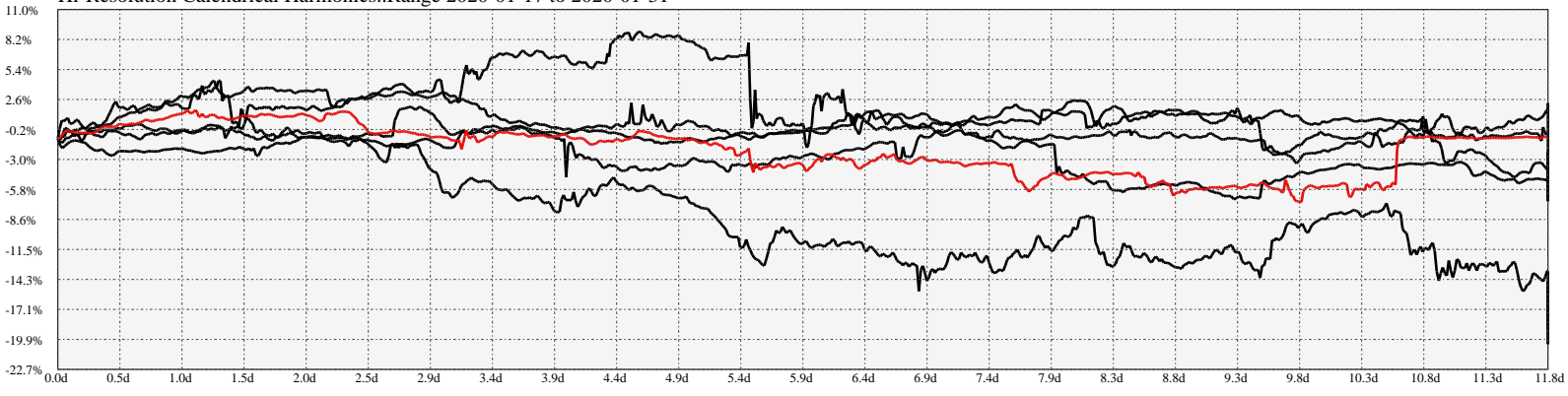
Earnings Frequency Spectrum: 0.95% to 2.29%



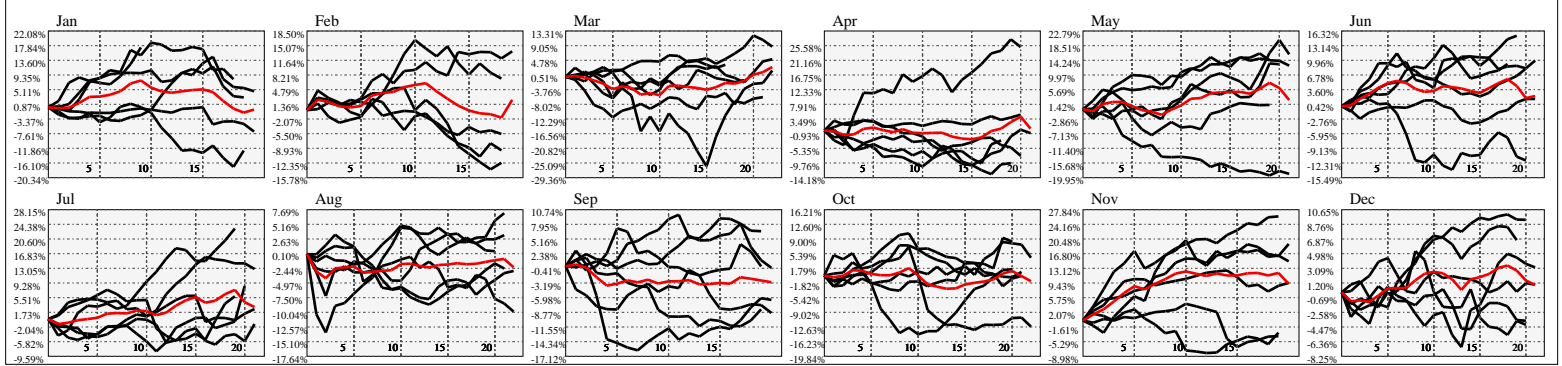
Earnings Calendar As of: 2025-Jan-17

Date	days..	eps \$	Earnings Est.
2025-01-23	5		

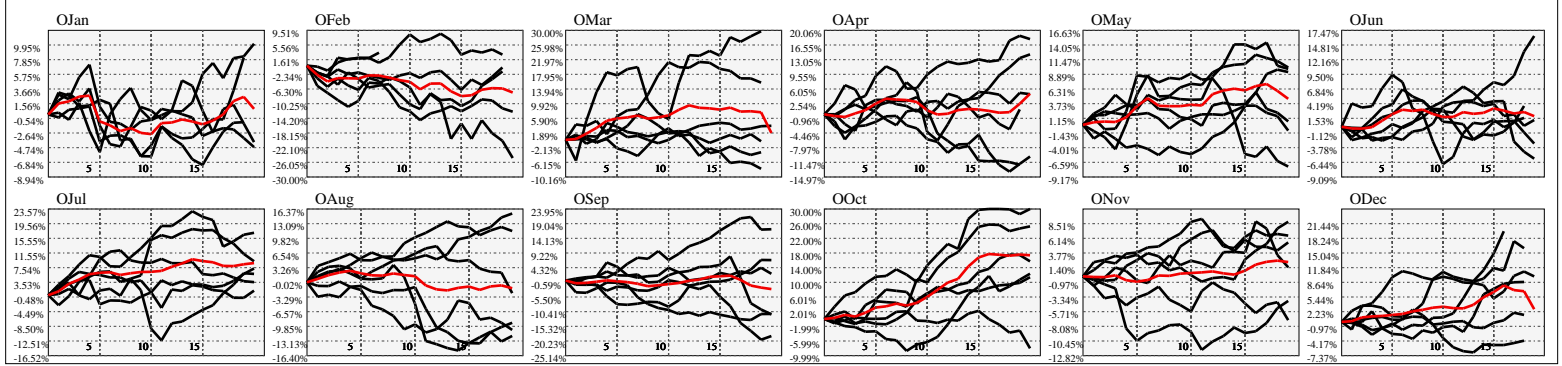
Hi-Resolution Calendrical Harmonics..Range 2020-01-17 to 2020-01-31



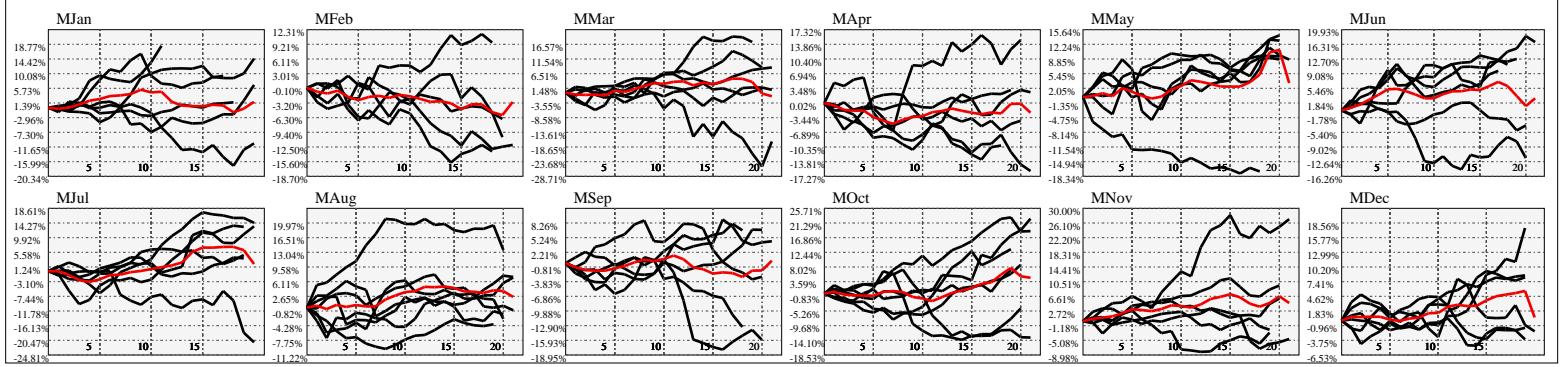
Calendrical Harmonics Standard..



Calendrical Harmonics 3rd Friday..



Calendrical Harmonics Moon Aligned..



Calendrical Harmonics Weekly w/ Day Of Week Alignments..

