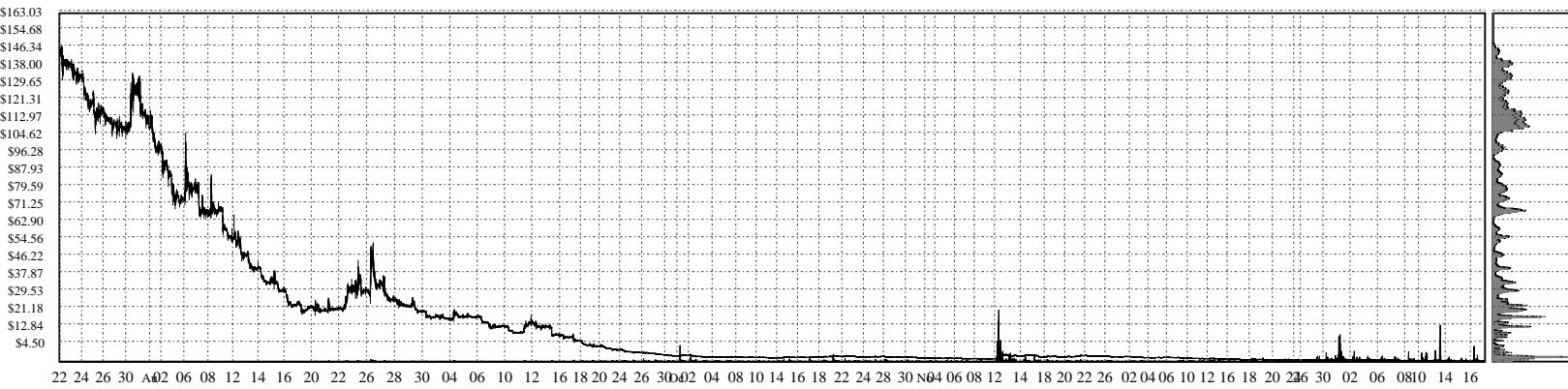
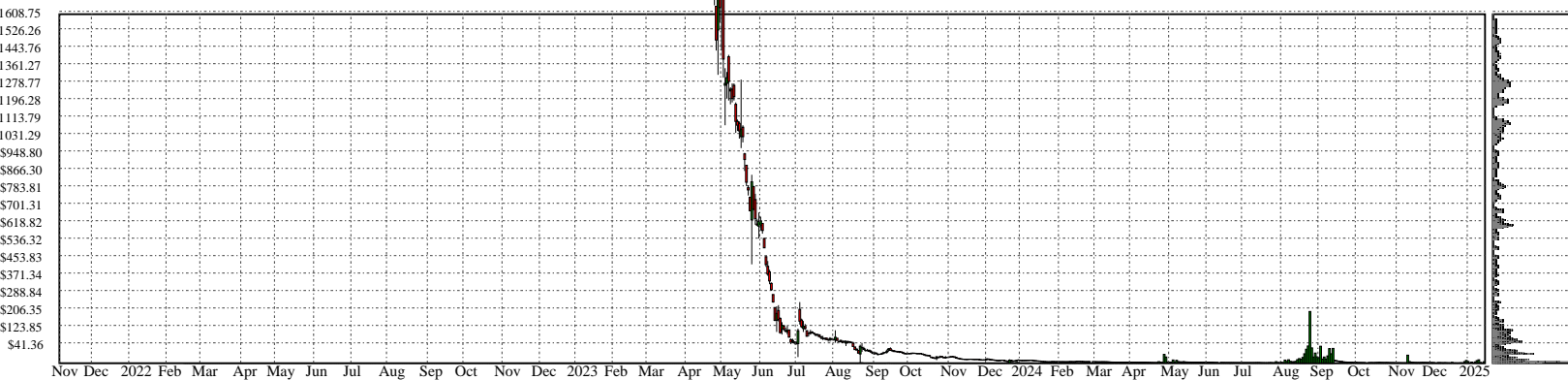
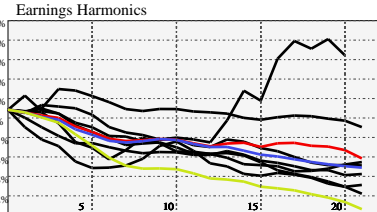


MULN- Mullen Automotive, Inc. Common Stock

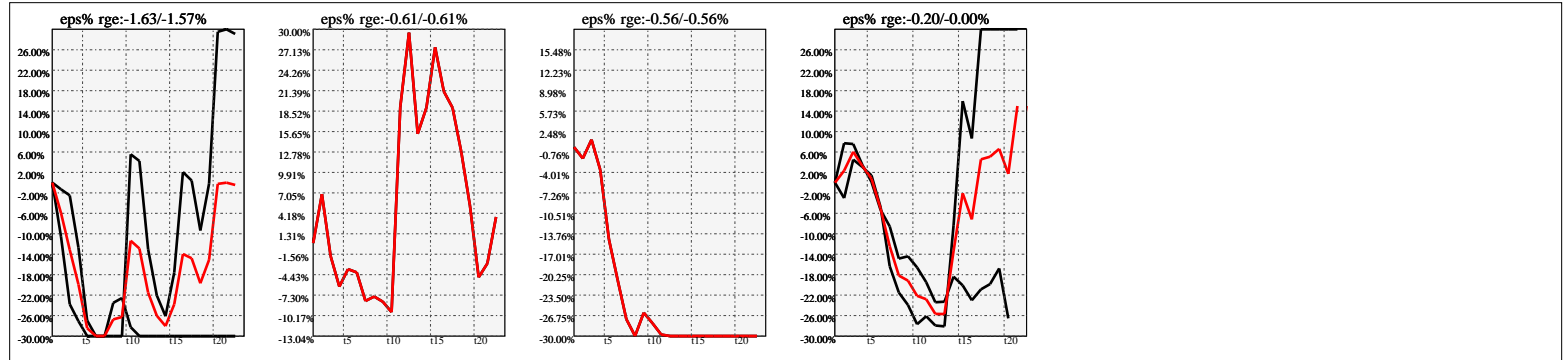


Company Snapshot: MULN

Date	Rev. \$\$	Profit R:	Gross Profit	ebitda	ebitda R:	eps	eps%	Dbt. Exp	Dbt. R:	Net Inc.	Netl R:
2023-09-30	366.0k	0.25	92.12k	-238.0M	-650.34	-1586.15	-3565.2%	4.993M	13.64246	-972.3M	-2656.4333
2022-09-30			-3.723M	-98.2M		-59872.6	-790.6%	26.9M		-740.3M	
2021-09-30	65.7M	0.98	64.5M	-21.7M	-0.33	-69.86		21.2M	0.32217	-65.4M	-0.9955
2020-09-30	65.0M	0.09	6.102M	-11.1M	-0.17	-51.57		18.1M	0.27837	-48.3M	-0.7428
2019-09-30	65.8M	0.12	7.945M	-11.3M	-0.17	-74.77		29.2M	0.44340	-70.0M	-1.0642
2018-12-31	65.8M	1.00	65.8M	-3.415M	-0.05	-1.28		-847.2k	-0.01288	-4.936M	-0.0750
2017-12-31	60.1M	1.00	60.1M	-8.679M	-0.14	-5.04		-1.190M	-0.01981	-9.913M	-0.1650
2016-12-31	54286.9B	1.00	54286.9B	-11613.4B	-0.21	-1.03		-1463.8B	-0.02696	-13487.5B	-0.2484



Earnings Quadrature: Size[6]



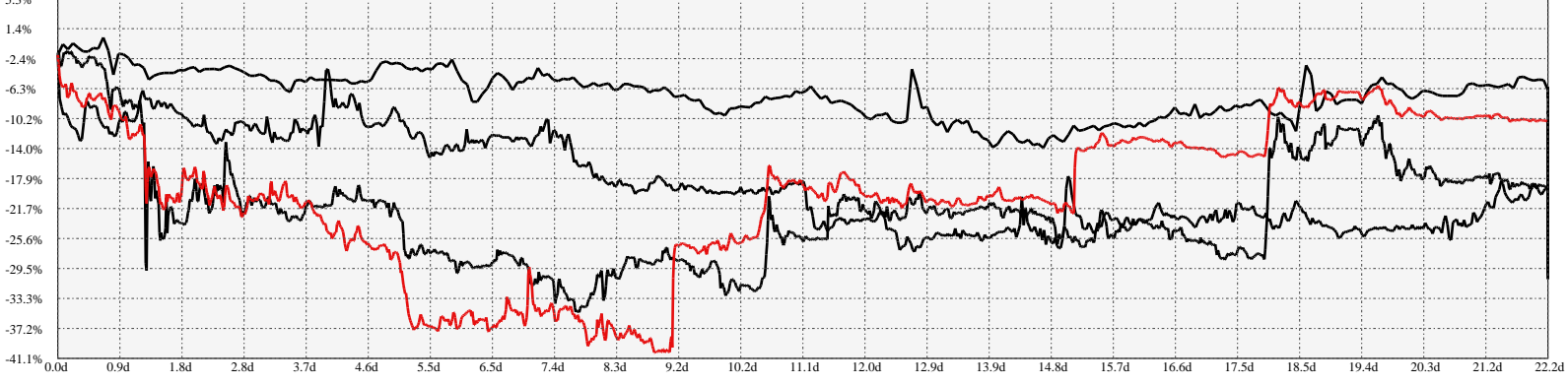
Earnings Frequency Spectrum: -204.27% to -8.51%



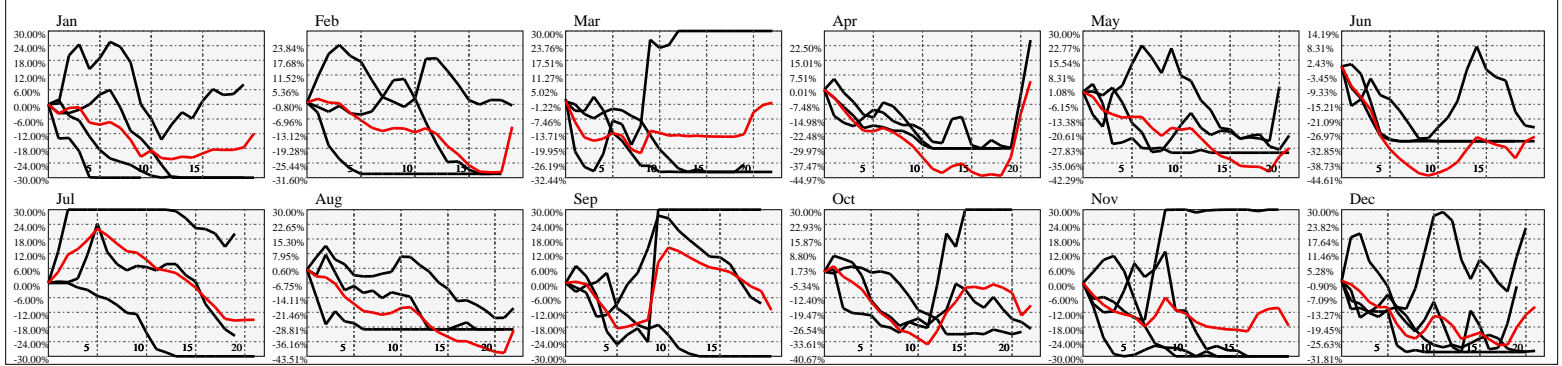
Earnings Calendar As of: 2025-Jan-17

Date	days..	eps \$	Earnings Est.

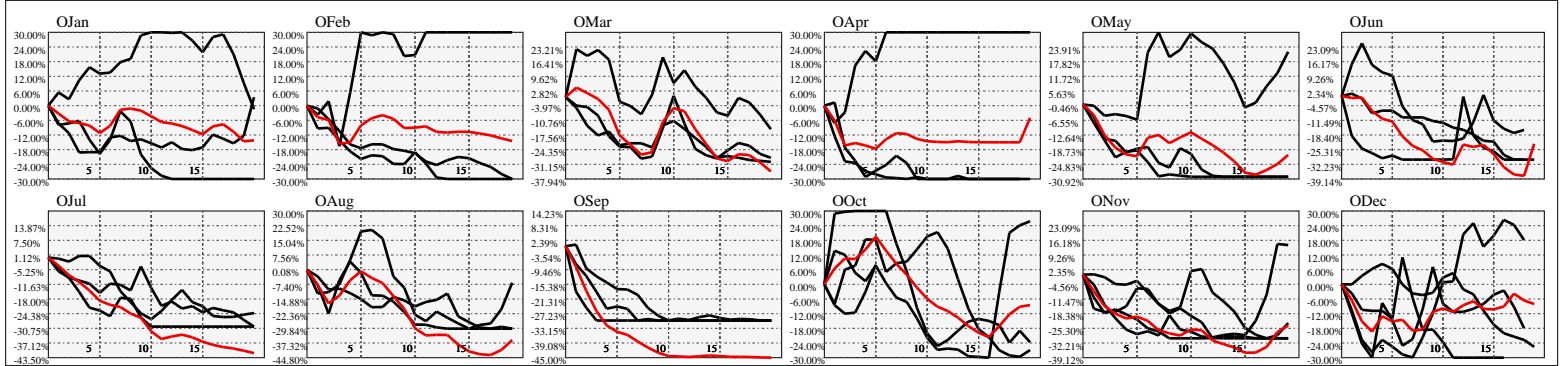
Hi-Resolution Calendrical Harmonics..Range 2022-01-14 to 2022-01-28



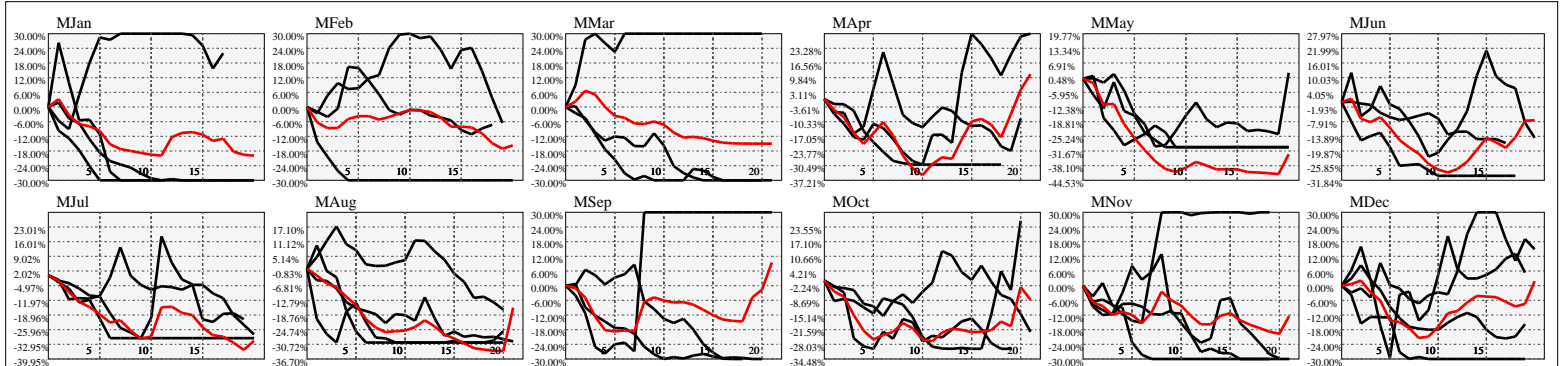
Calendrical Harmonics Standard..



Calendrical Harmonics 3rd Friday..



Calendrical Harmonics Moon Aligned..



Calendrical Harmonics Weekly w/ Day Of Week Alignments.

