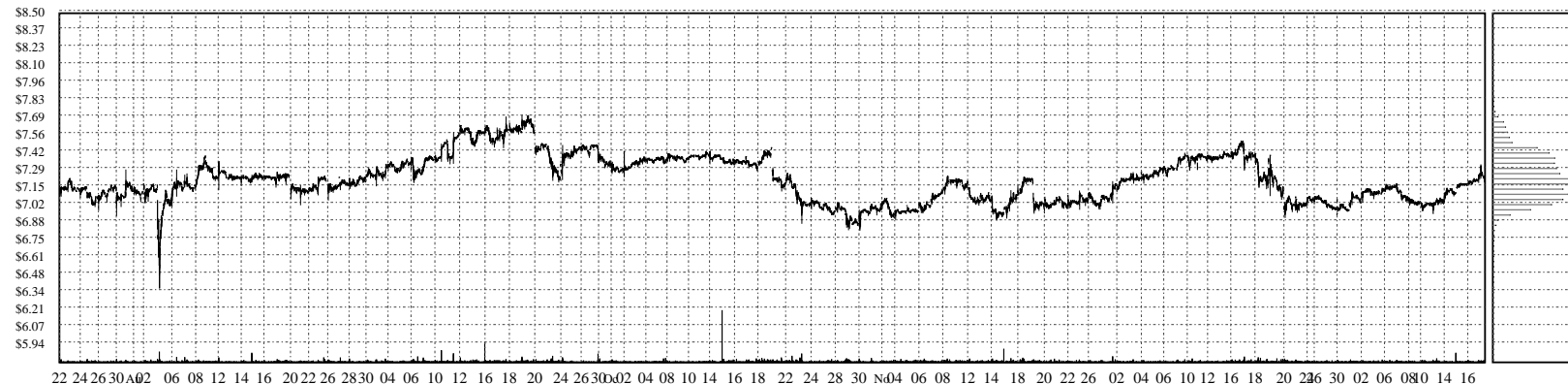
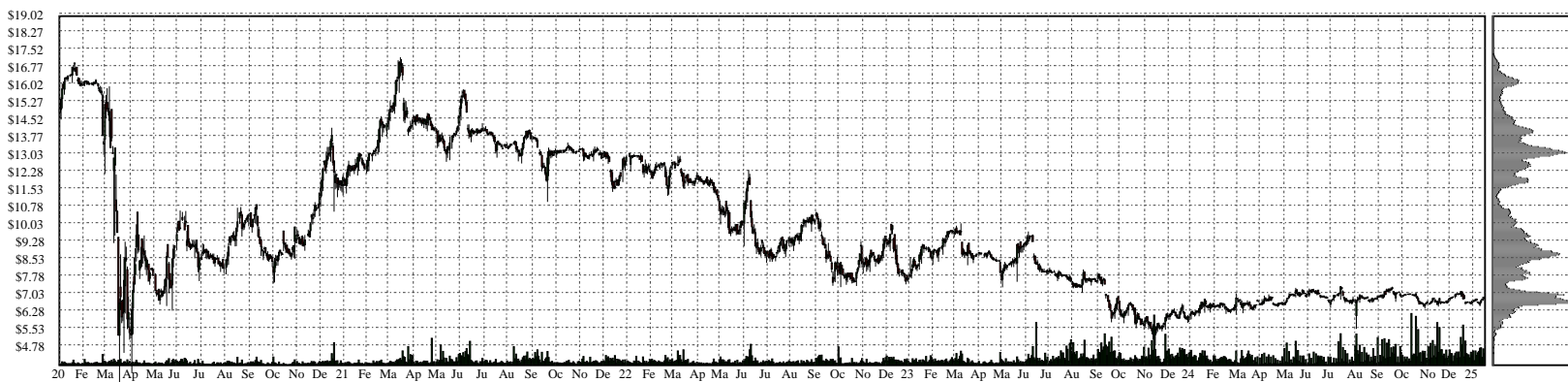
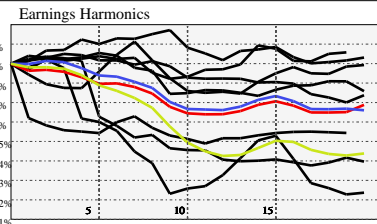


# OCCI - OFS Credit Company, Inc. Common Stock

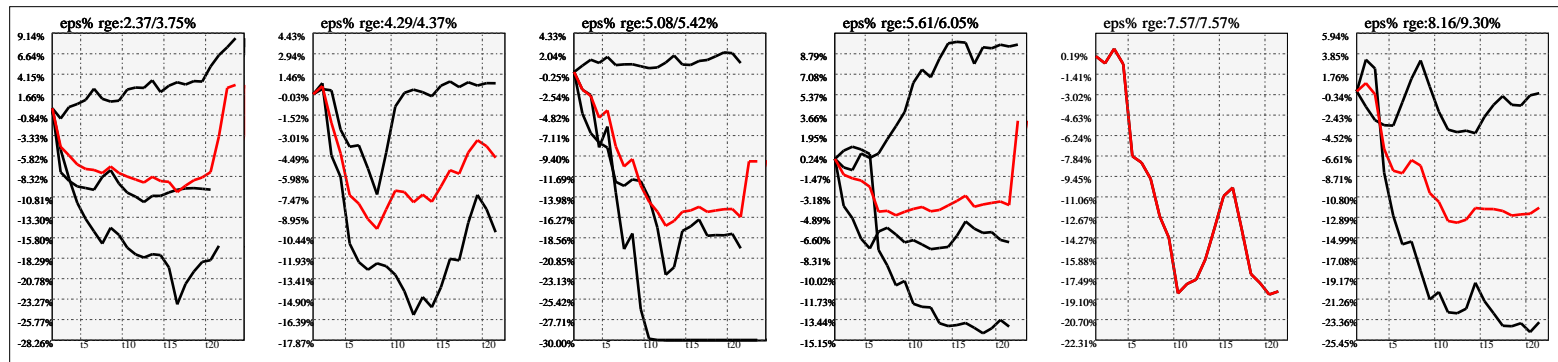


## Company Snapshot: OCCI

Date	Rev. \$\$	Profit R:	Gross Profit	ebitda	ebitda R:	eps	eps%	Dbt. Exp	Dbt. R:	Net Inc.	Netl R:
2023-10-31	945.8k	1.00	945.8k	-1.888M	-2.00		0.0%	4.085M	4.31908	-1.888M	-1.9966
2022-10-31	-10.4M	1.00	-10.4M	-9.538M	0.92	-1.76	-18.5%	4.049M		-13.6M	1.3093
2021-10-31	23.0M	1.00	23.0M	20.3M	0.88	3.81	28.1%	2.720M	0.11839	20.3M	0.8841
2020-10-31	-1.636M	1.00	-1.636M	-3.677M	2.25	-1.14	-11.7%	1.632M		-3.677M	2.2476
2019-10-31	-6.474M	1.00	-6.474M	-7.859M	1.21	-3.02	-17.9%	982.2k		-7.859M	1.2138
2018-10-31	350.8k	0.53	186.0k	356.0k	1.01	0.11	0.6%	69.47k	0.19802	286.5k	0.8167



## Earnings Quadrature: Size[6]



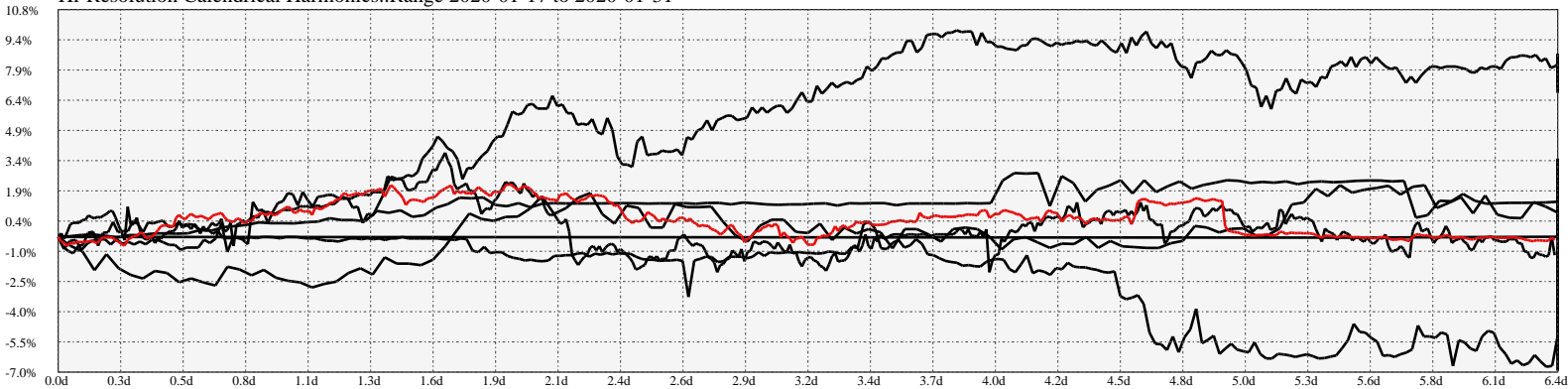
## Earnings Frequency Spectrum: -55.36% to 6.60%



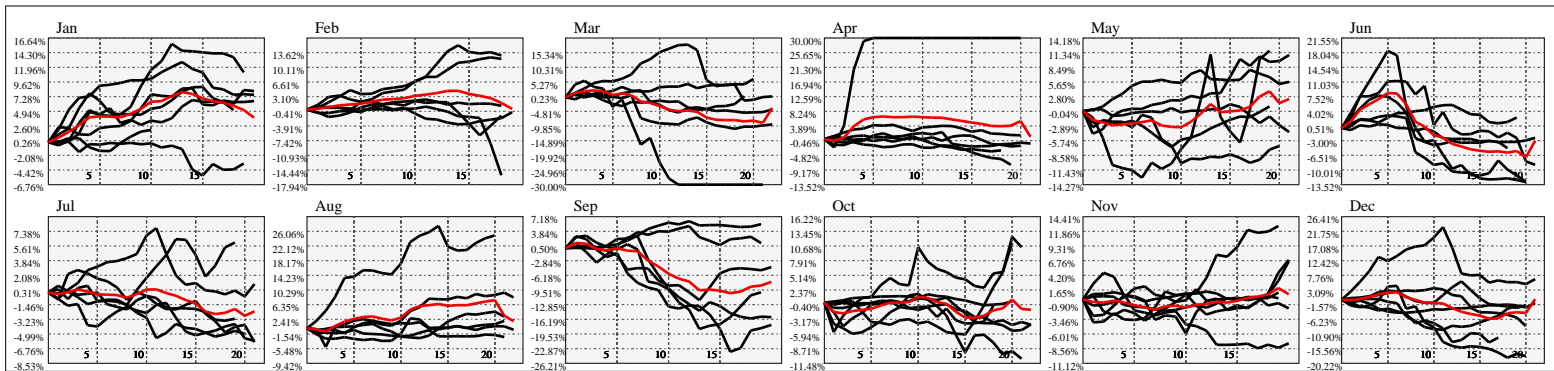
## Earnings Calendar As of: 2025-Jan-17

Date	days..	eps \$	Earnings Est.

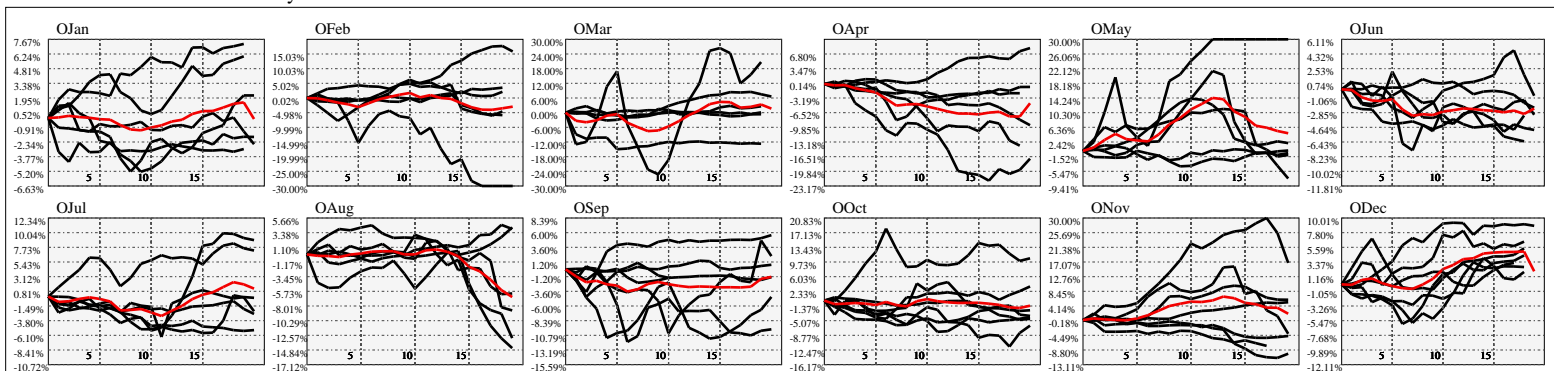
Hi-Resolution Calendrical Harmonics..Range 2020-01-17 to 2020-01-31



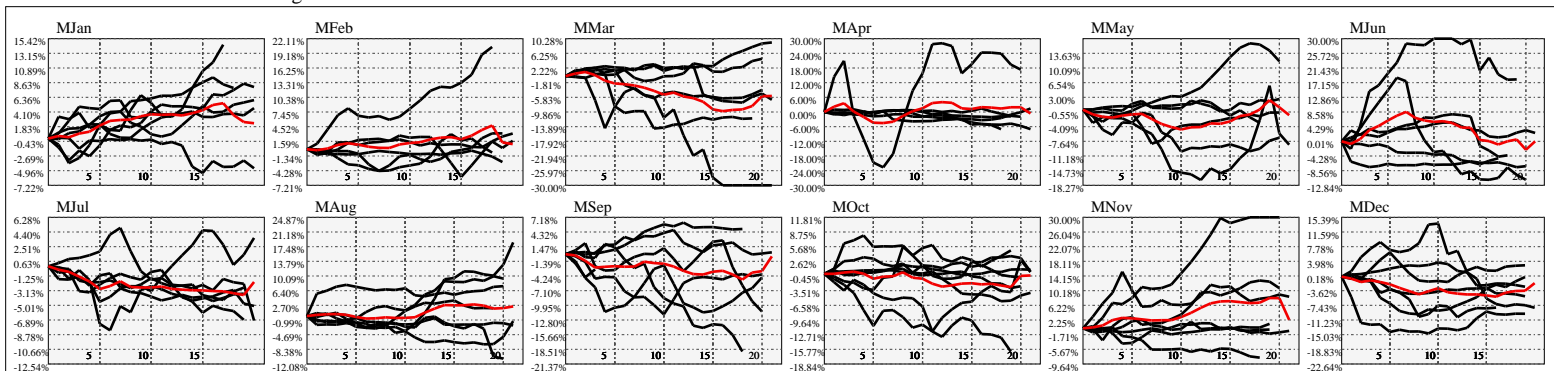
Calendrical Harmonics Standard..



Calendrical Harmonics 3rd Friday..



Calendrical Harmonics Moon Aligned..



Calendrical Harmonics Weekly w/ Day Of Week Alignments.

