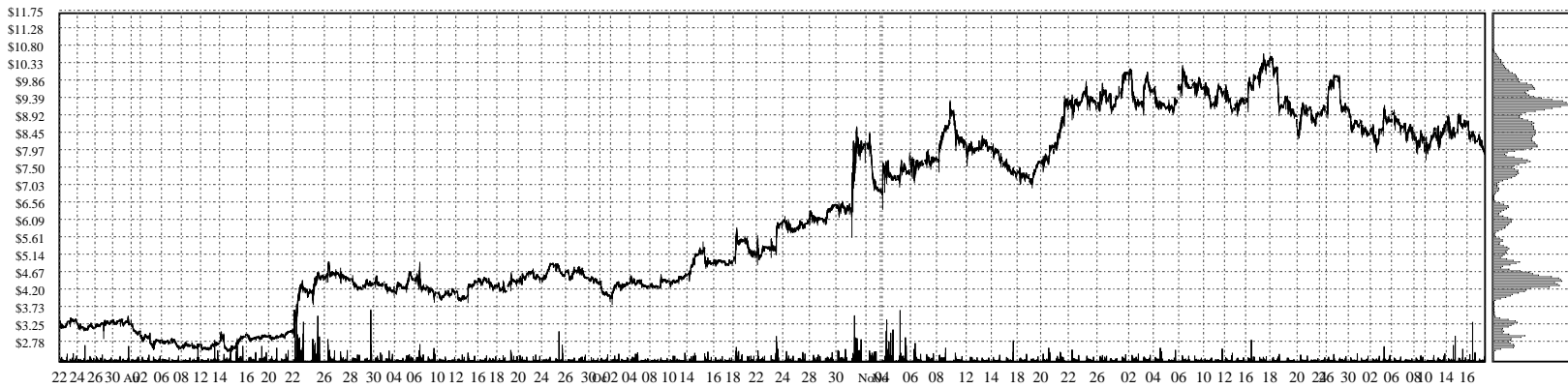
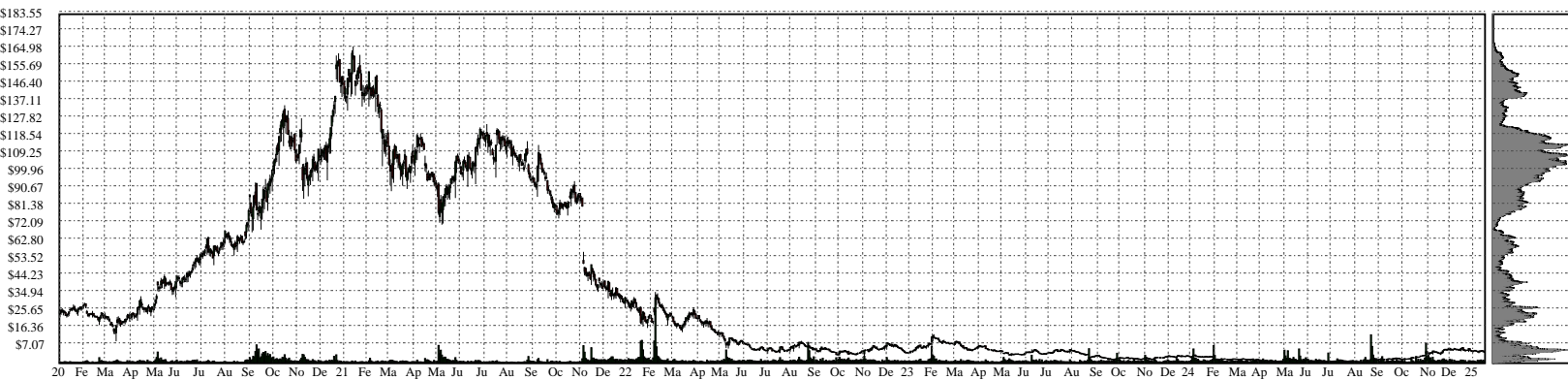
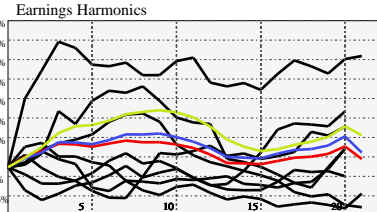


PTON- Peloton Interactive, Inc. Class A Common

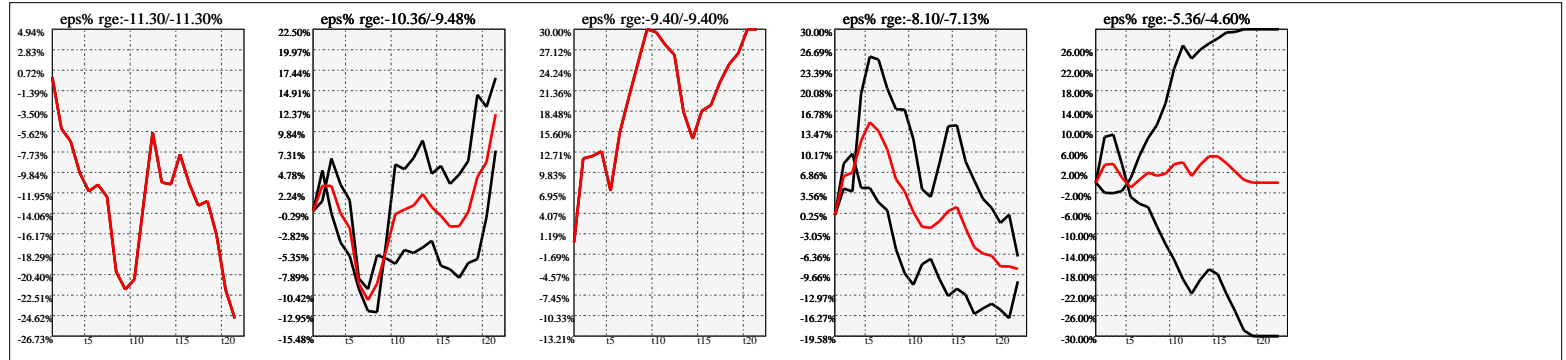


Company Snapshot: PTON

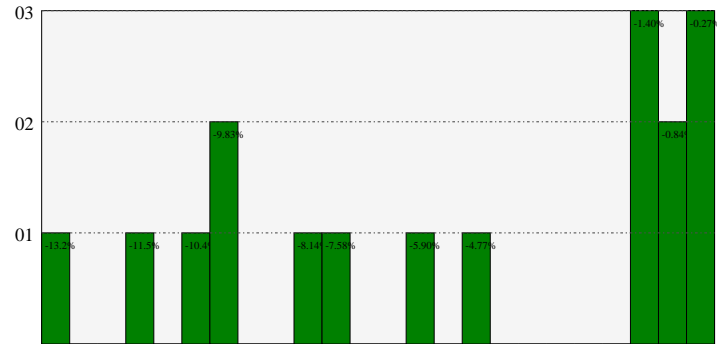
Date	Rev. \$\$	Profit R:	Gross Profit	ebitda	ebitda R:	eps	eps%	Dbt. Exp	Dbt. R:	Net Inc.	Netl R:
2023-06-30	2.800B	0.33	923.6M	-687.7M	-0.25	-3.64	-47.6%	97.1M	0.03467	-1.262B	-0.4506
2022-06-30	3.582B	0.19	698.4M	-1.500B	-0.42	-8.74	-93.2%	43.0M	0.01200	-2.817B	-0.7863
2021-06-30	4.022B	0.36	1.452B	-116.1M	-0.03	-0.64	-0.5%	14.8M	0.00368	-189.0M	-0.0470
2020-06-30	1.826B	0.46	836.8M	-40.7M	-0.02	-0.32	-0.6%			-71.7M	-0.0393
2019-06-30	915.0M	0.42	383.6M	-180.5M	-0.20	-0.7		-6.500M	-0.00710	-195.5M	-0.2137
2018-06-30	435.0M	0.44	189.6M	-40.9M	-0.09	-0.21		300.0k	0.00069	-47.9M	-0.1101
2017-06-30	218.6M	0.34	73.9M	-67.0M	-0.31	-0.3				-71.1M	-0.3253



Earnings Quadrature: Size[6]



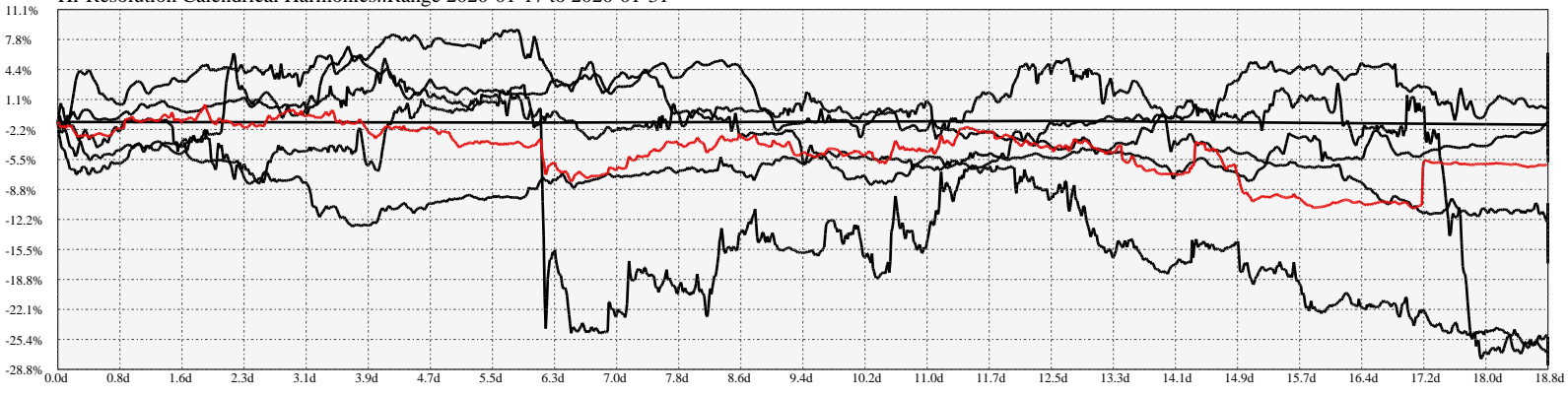
Earnings Frequency Spectrum: -13.20% to -0.27%



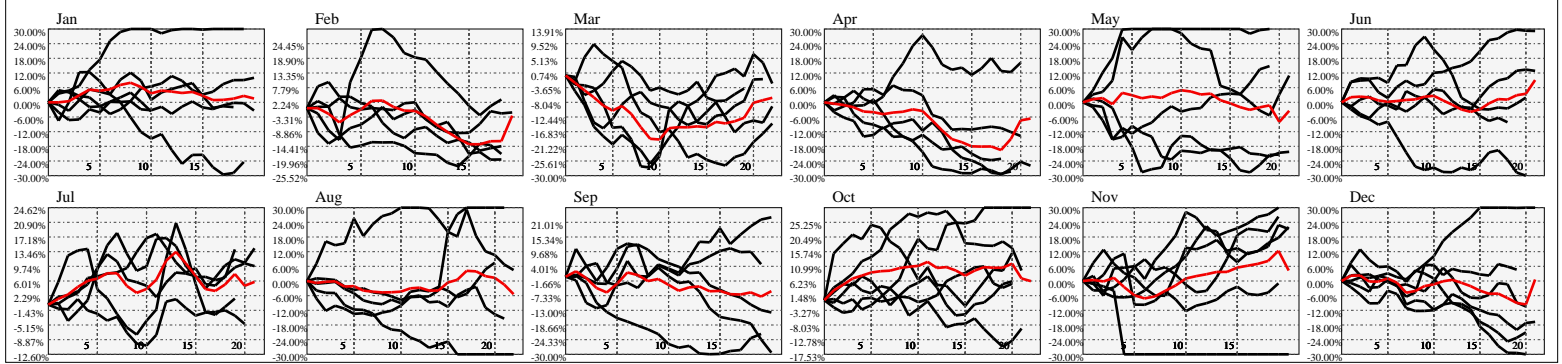
Earnings Calendar As of: 2025-Jan-17

Date	days..	eps \$	Earnings Est.

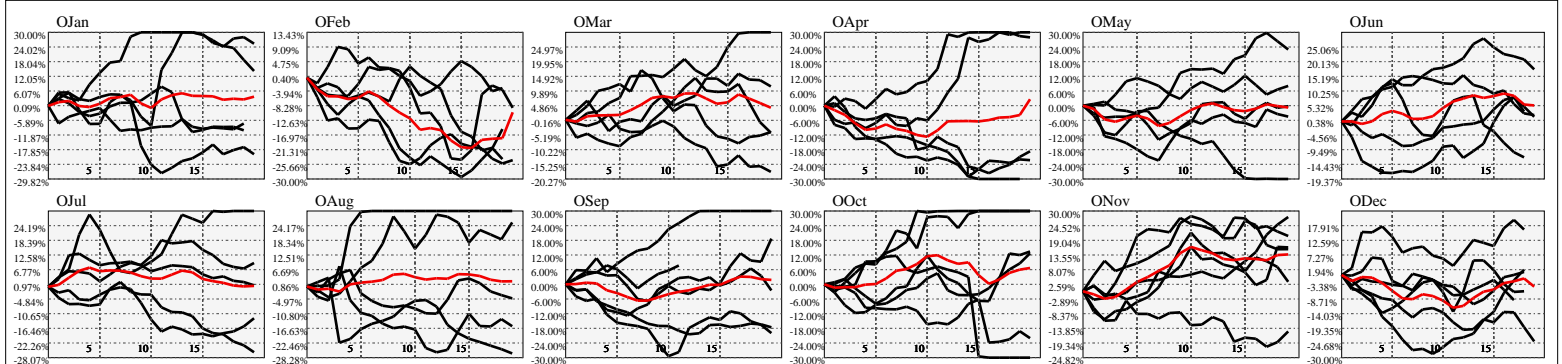
Hi-Resolution Calendrical Harmonics..Range 2020-01-17 to 2020-01-31



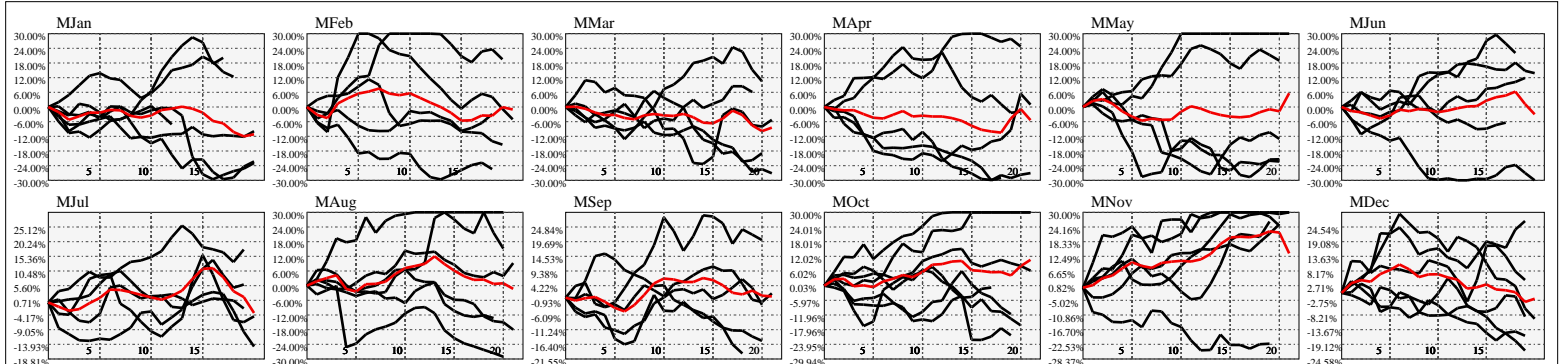
Calendrical Harmonics Standard..



Calendrical Harmonics 3rd Friday..



Calendrical Harmonics Moon Aligned..



Calendrical Harmonics Weekly w/ Day Of Week Alignments..

