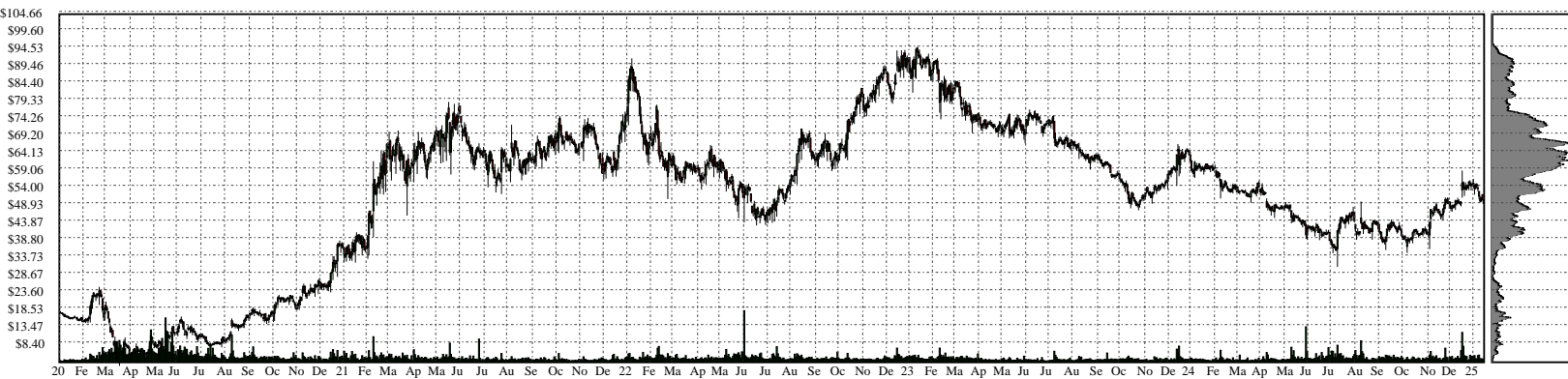
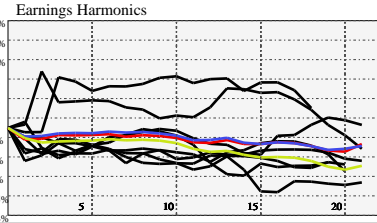


RICK- RCI Hospitality Holdings, Inc.

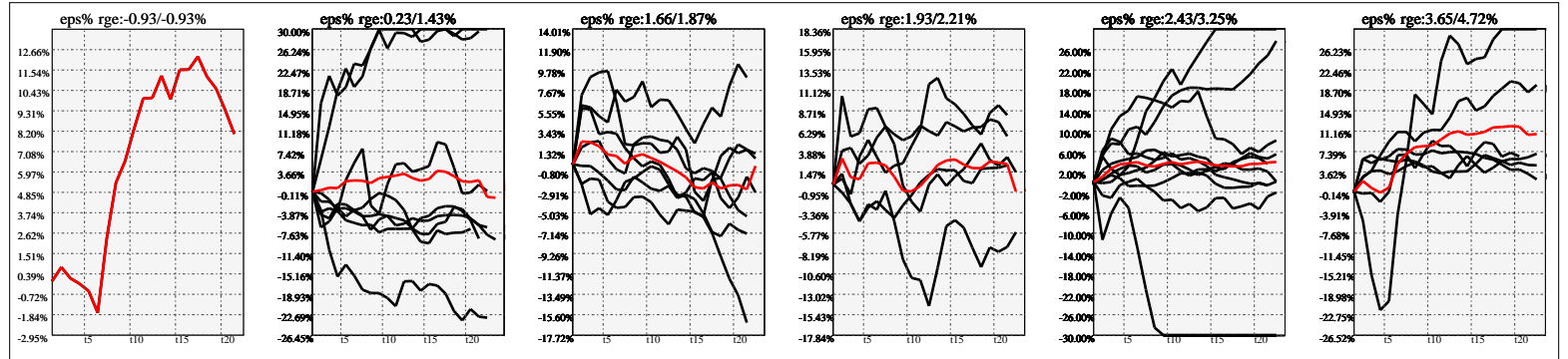


Company Snapshot: RICK

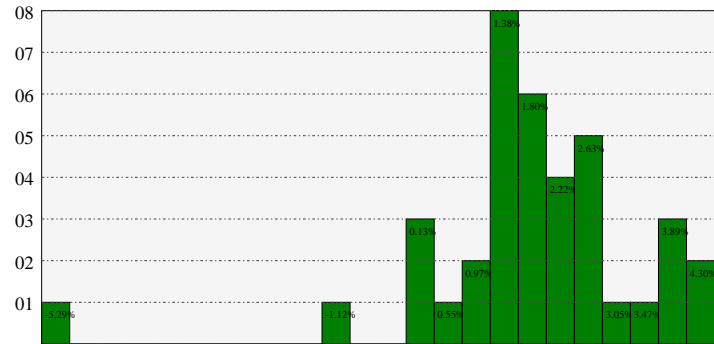
Date	Rev. \$\$	Profit R:	Gross Profit	ebitda	ebitda R:	eps	eps%	Dbt. Exp	Dbt. R:	Net Inc.	Netl R:
2023-09-30	293.8M	0.60	175.3M	67.0M	0.23	3.13	5.1%	15.9M	0.05421	29.2M	0.0995
2022-09-30	267.6M	0.61	163.2M	84.5M	0.32	4.91	7.6%	11.9M	0.04465	46.0M	0.1720
2021-09-30	195.3M	0.59	114.6M	52.4M	0.27	3.37	4.8%	9.992M	0.05117	30.3M	0.1554
2020-09-30	132.3M	0.56	73.8M	11.8M	0.09	-0.69	-3.5%	9.811M	0.07414	-6.312M	-0.0477
2019-09-30	181.1M	0.59	106.3M	43.5M	0.24	1.99	9.4%	10.2M	0.05638	19.2M	0.1059
2018-09-30	165.7M	0.59	98.3M	36.4M	0.22	2.23	7.6%	9.954M	0.06006	21.7M	0.1310
2017-09-30	144.9M	0.58	84.1M	30.3M	0.21	0.85	3.3%	8.764M	0.06048	8.259M	0.0570
2016-09-30	134.9M	0.57	76.9M	28.2M	0.21	1.12	9.8%	7.982M	0.05919	11.1M	0.0822



Earnings Quadrature: Size[6]



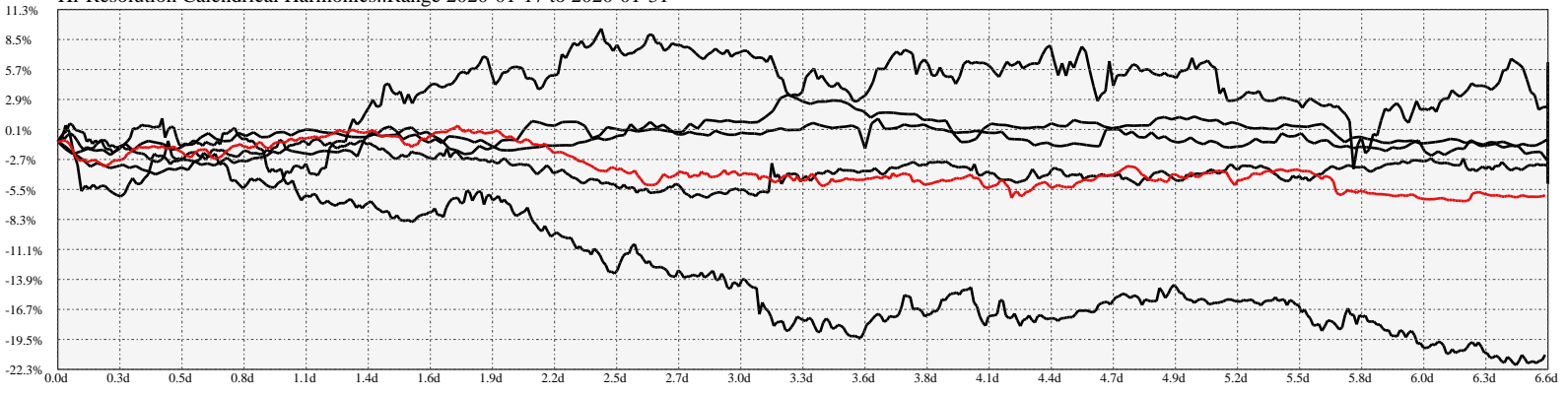
Earnings Frequency Spectrum: -5.29% to 4.30%



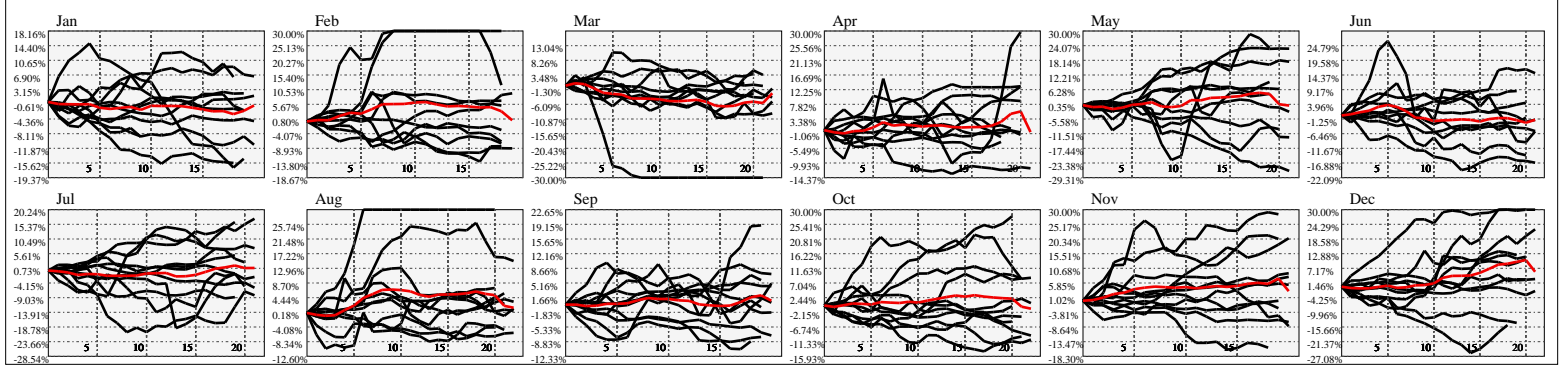
Earnings Calendar As of: 2025-Jan-17

Date	days..	eps \$	Earnings Est.

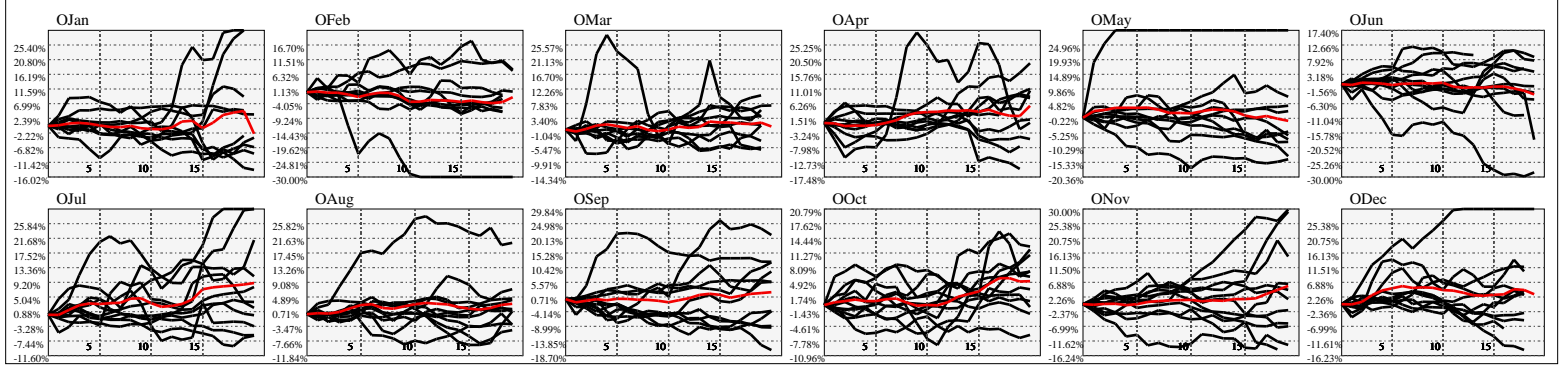
Hi-Resolution Calendrical Harmonics..Range 2020-01-17 to 2020-01-31



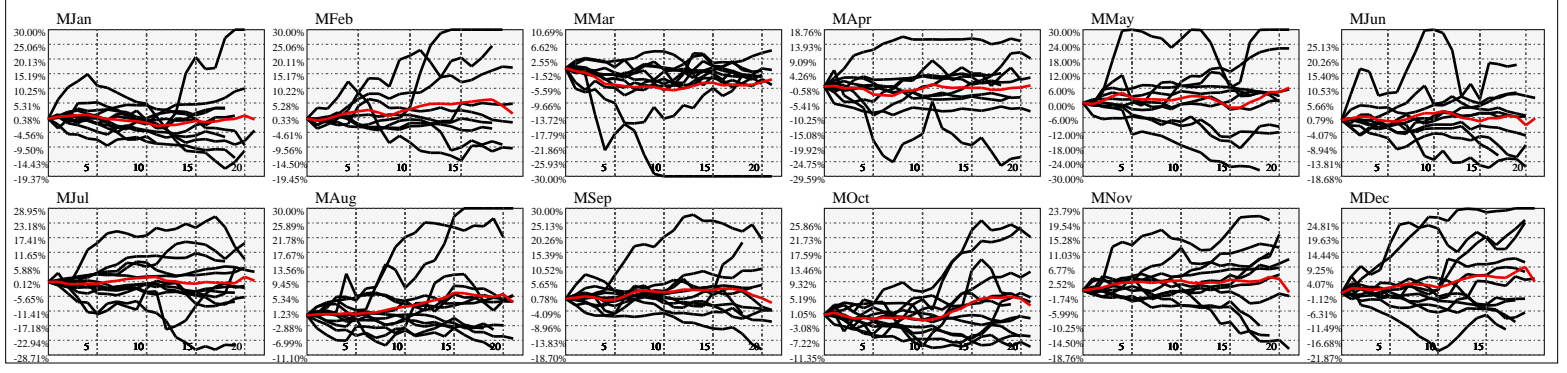
Calendrical Harmonics Standard..



Calendrical Harmonics 3rd Friday..



Calendrical Harmonics Moon Aligned..



Calendrical Harmonics Weekly w/ Day Of Week Alignments..

