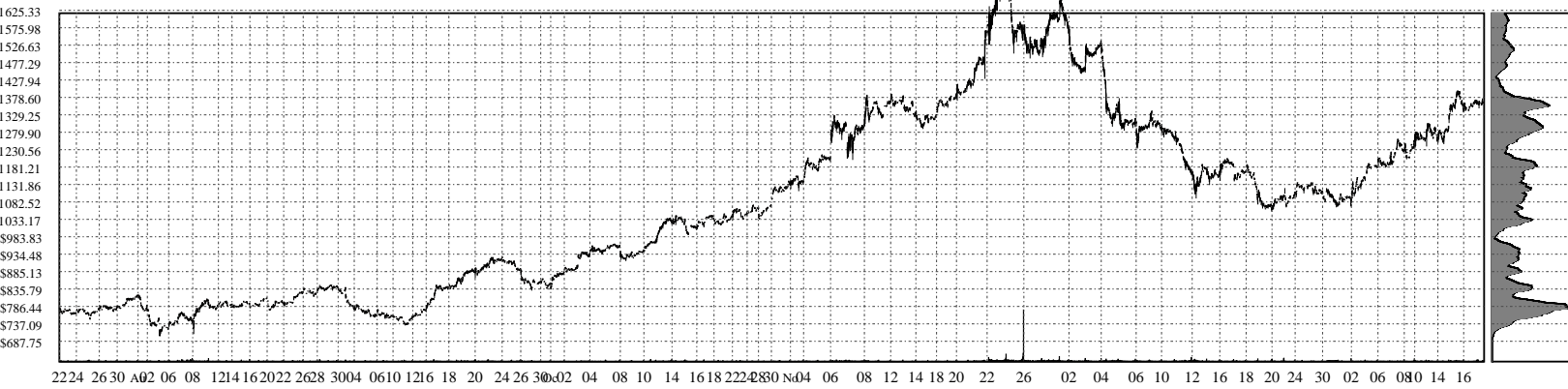
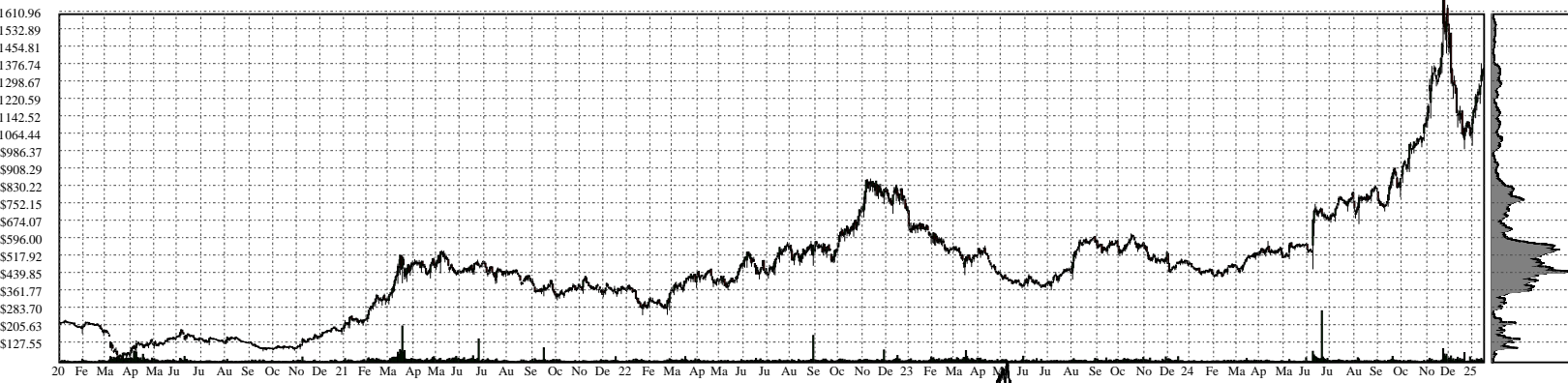
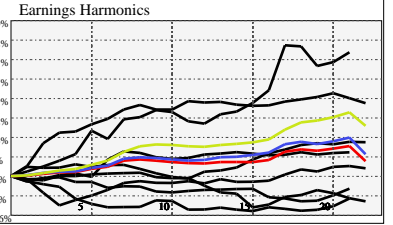


TPL- Texas Pacific Land Corporation

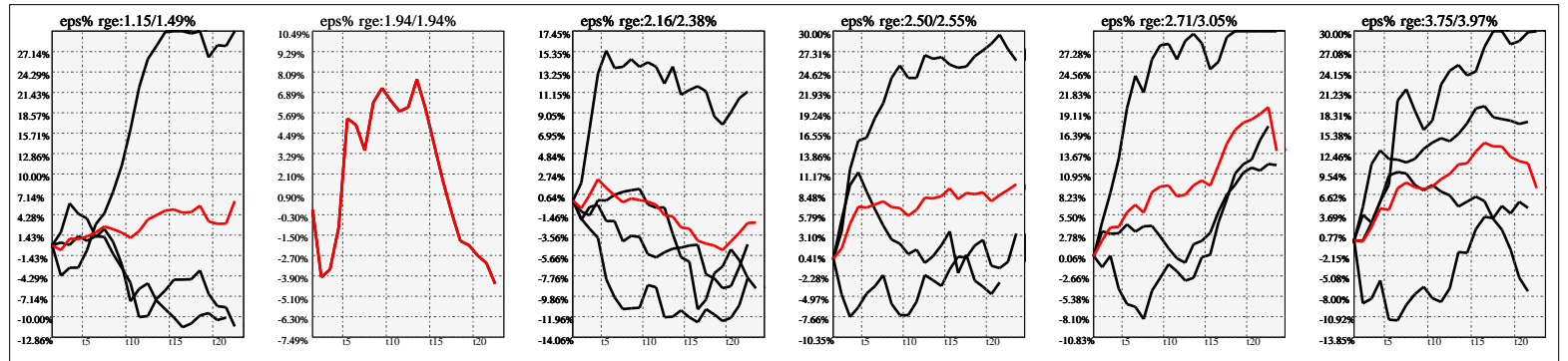


Company Snapshot: TPL

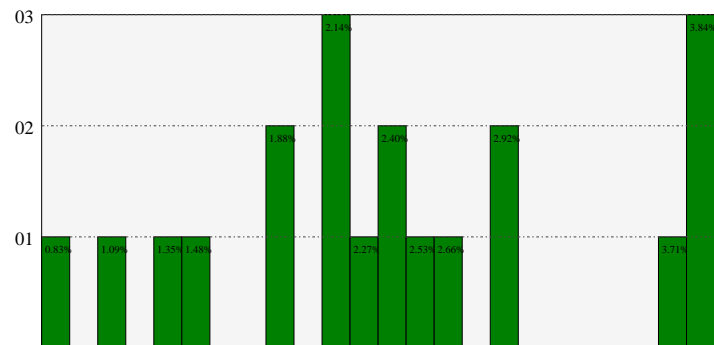
Date	Rev. \$\$	Profit R:	Gross Profit	ebitda	ebitda R:	eps	eps%	Dbt. Exp	Dbt. R:	Net Inc.	Netl R:
2023-12-31	631.6M	0.92	583.3M	500.8M	0.79	52.81	9.9%			405.6M	0.6423
2022-12-31	667.4M	0.95	634.5M	562.3M	0.84	57.8	7.5%	-6.548M	-0.00981	446.4M	0.6688
2021-12-31	451.0M	0.93	421.5M	362.4M	0.80	34.83	8.4%			270.0M	0.5987
2020-12-31	302.6M	0.89	270.0M	217.3M	0.72	22.7	9.5%			176.0M	0.5819
2019-12-31	490.5M	0.94	460.8M	401.8M	0.82	41.38	15.5%			320.9M	0.6543
2018-12-31	300.2M	0.95	286.5M	263.4M	0.88	26.93				209.7M	0.6986
2017-12-31	132.3M	0.99	131.5M	120.2M	0.91	12.38		84.00k	0.00063	76.4M	0.5771
2016-12-31	59.9M	1.00	59.9M	55.1M	0.92	5.29		29.07k	0.00049	37.2M	0.6216



Earnings Quadrature: Size[6]



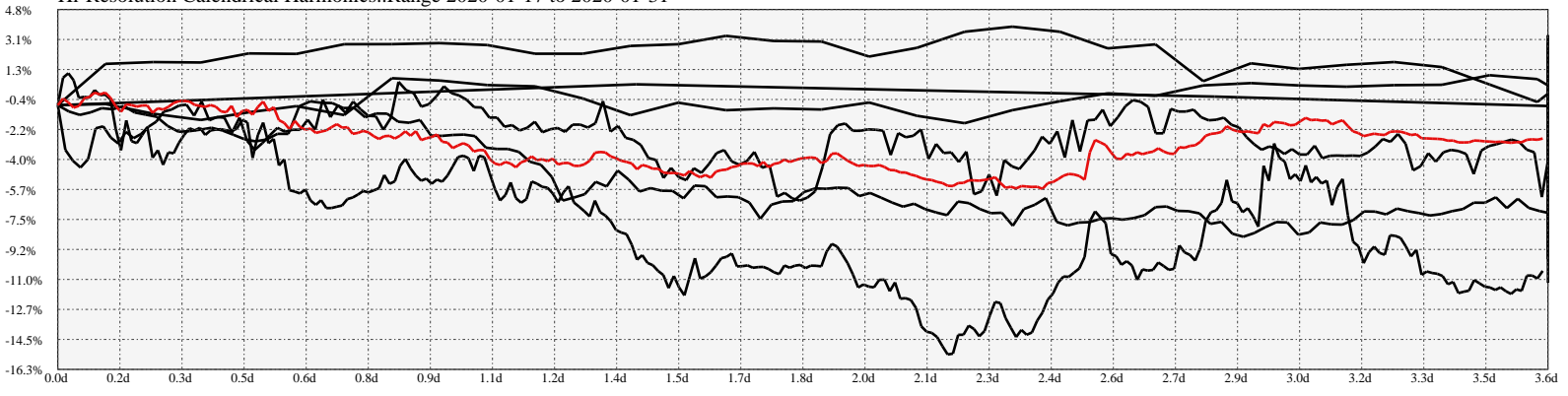
Earnings Frequency Spectrum: 0.83% to 3.84%



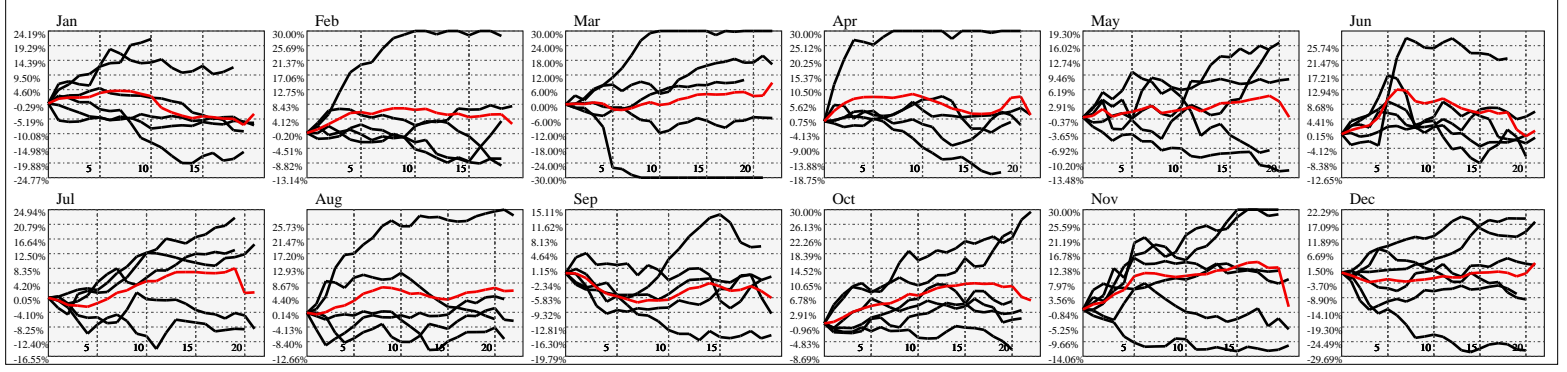
Earnings Calendar As of: 2025-Jan-17

Date	days..	eps \$	Earnings Est.
2025-02-19	32		

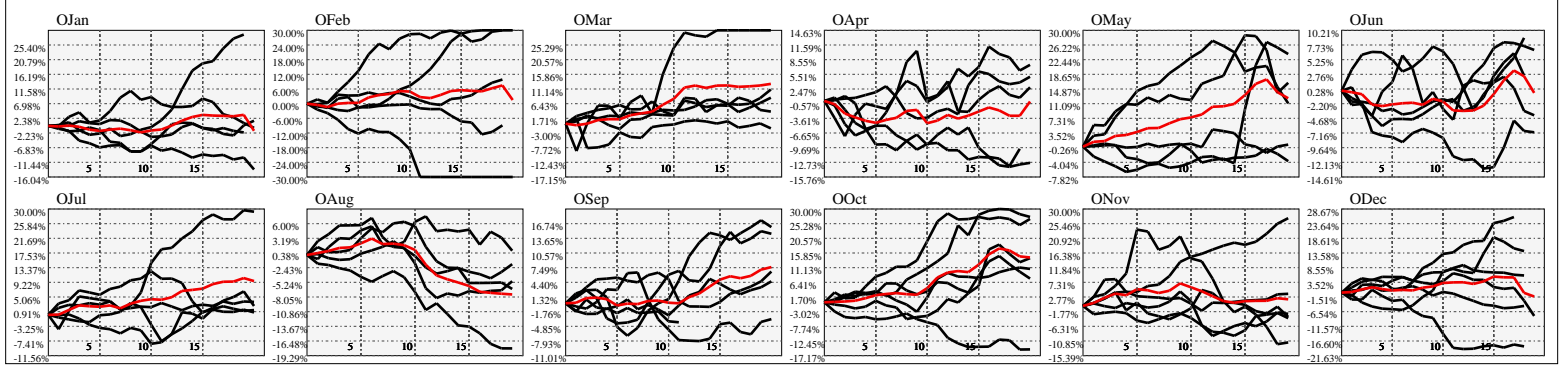
Hi-Resolution Calendrical Harmonics..Range 2020-01-17 to 2020-01-31



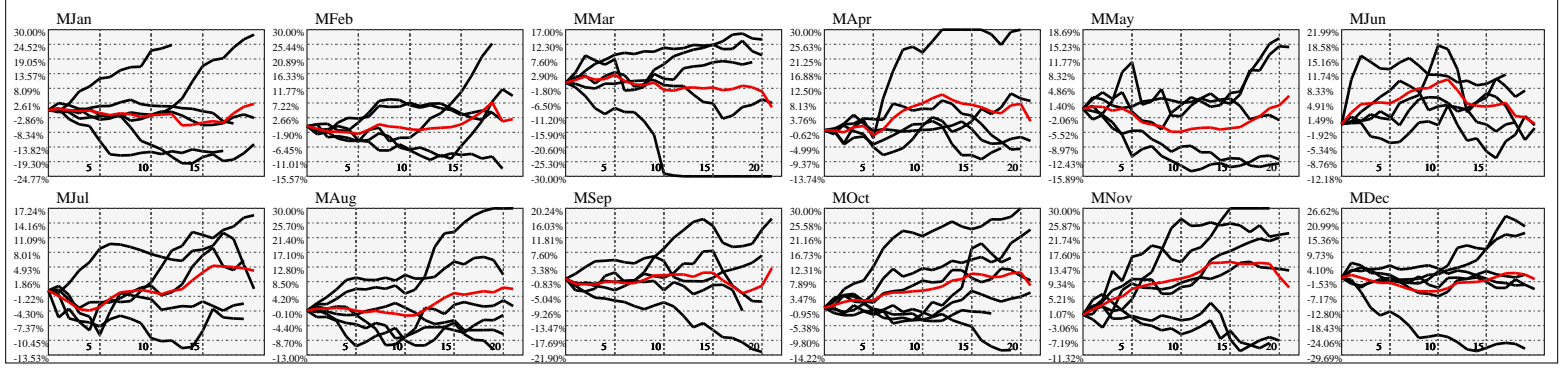
Calendrical Harmonics Standard..



Calendrical Harmonics 3rd Friday..



Calendrical Harmonics Moon Aligned..



Calendrical Harmonics Weekly w/ Day Of Week Alignments.

