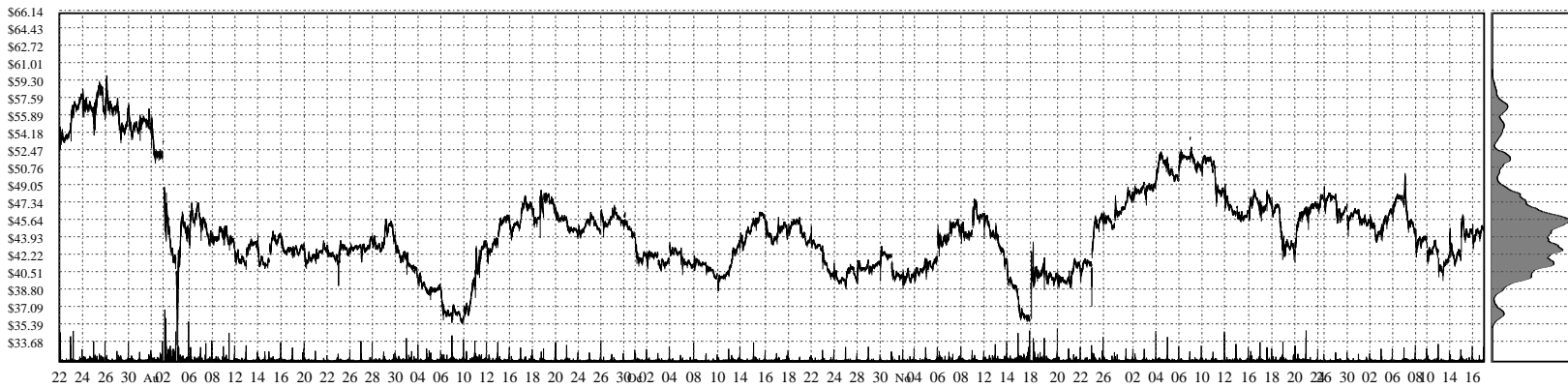
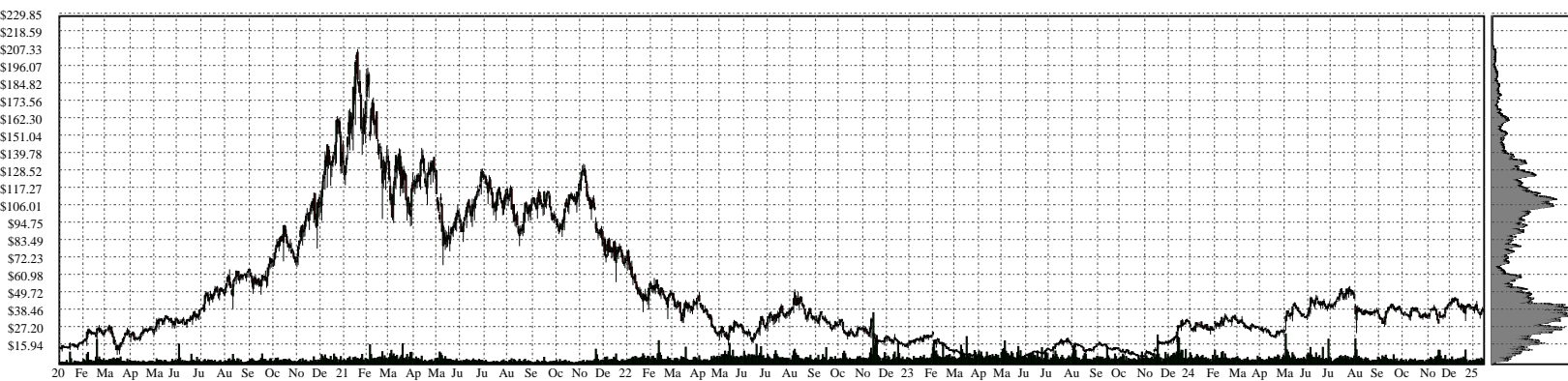
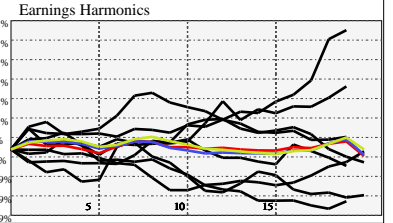


TWST- Twist Bioscience Corporation Common Stoc

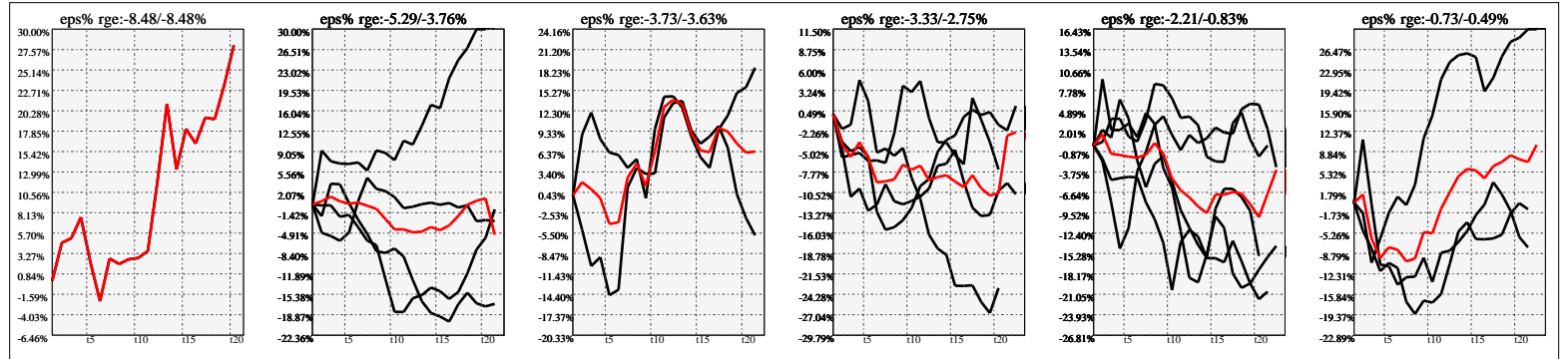


Company Snapshot: TWST

Date	Rev. \$\$	Profit R:	Gross Profit	ebitda	ebitda R:	eps	eps%	Dbt. Exp	Dbt. R:	Net Inc.	Netl R:
2023-09-30	245.1M	0.37	89.7M	-193.2M	-0.79	-3.6	-17.1%	5.00k	0.00002	-204.6M	-0.8348
2022-09-30	203.6M	0.41	84.2M	-247.0M	-1.21	-4.04	-11.3%	80.00k	0.00039	-217.9M	-1.0702
2021-09-30	132.3M	0.39	51.7M	-154.2M	-1.17	-3.15	-3.0%	367.0k	0.00277	-152.1M	-1.1494
2020-09-30	90.1M	0.32	28.7M	-116.3M	-1.29	-3.57	-4.6%	787.0k	0.00873	-139.9M	-1.5531
2019-09-30	54.4M	0.13	6.959M	-106.1M	-1.95	-3.92	-16.4%	1.294M	0.02379	-107.7M	-1.9798
2018-09-30	25.4M	-0.27	-6.762M	-64.0M	-2.52	-2.68		1.313M	0.05164	-71.2M	-2.8016
2017-09-30	10.8M	-1.23	-13.3M	-53.1M	-4.93	-3.16		905.0k	0.08405	-59.3M	-5.5085
2016-09-30	2.269M	-3.15	-7.152M	-39.1M	-17.24	-2.35		746.0k	0.32878	-44.1M	-19.4306



Earnings Quadrature: Size[6]



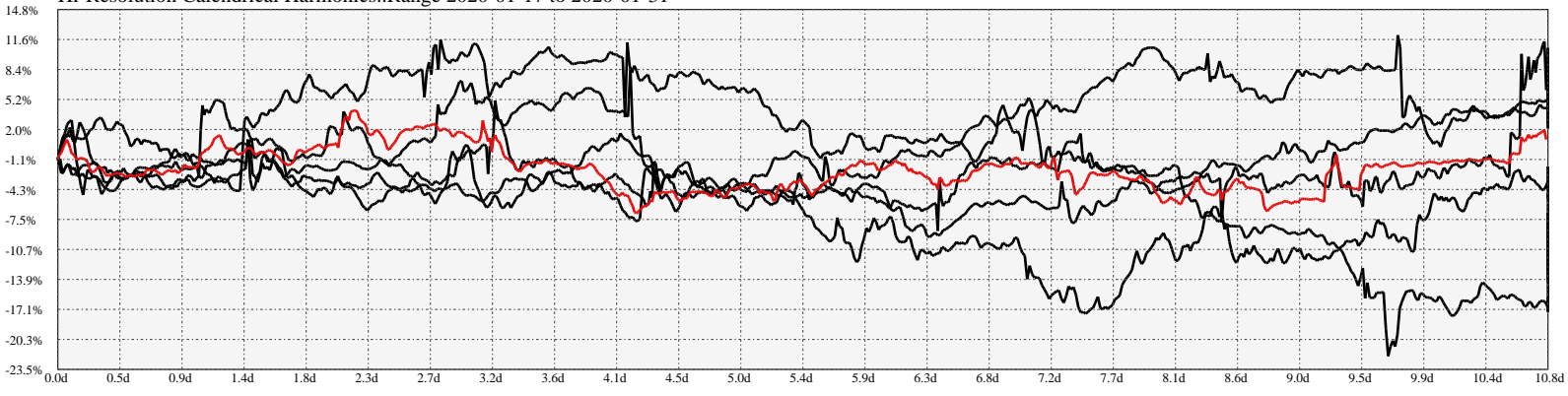
Earnings Frequency Spectrum: -34.15% to -1.78%



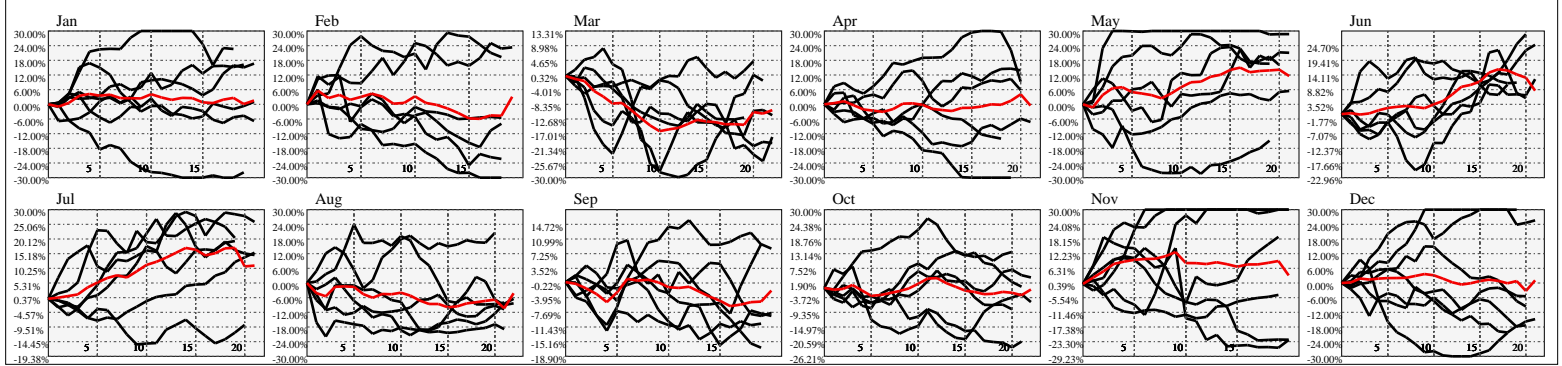
Earnings Calendar As of: 2025-Jan-17

Date	days..	eps \$	Earnings Est.

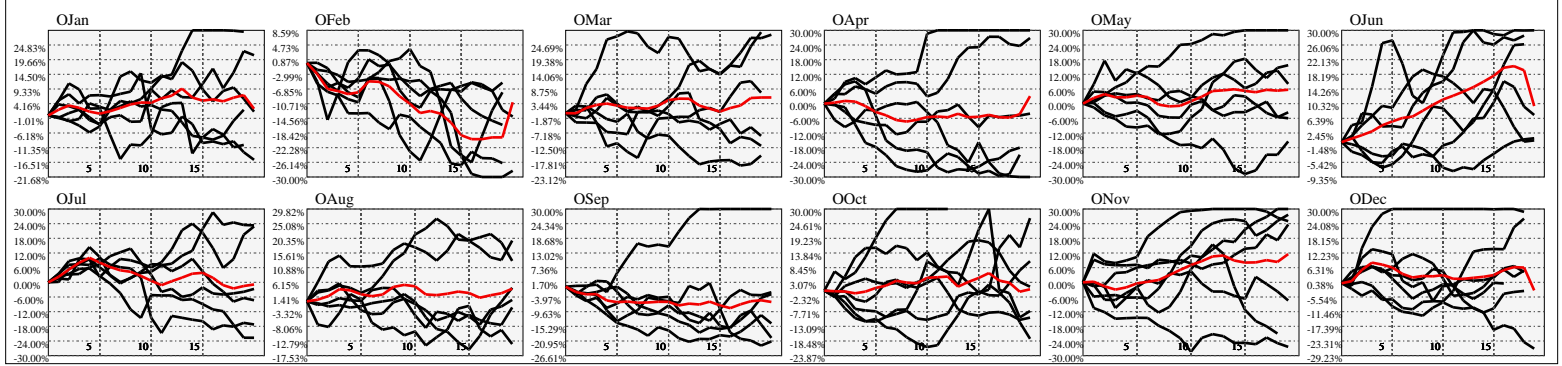
Hi-Resolution Calendrical Harmonics..Range 2020-01-17 to 2020-01-31



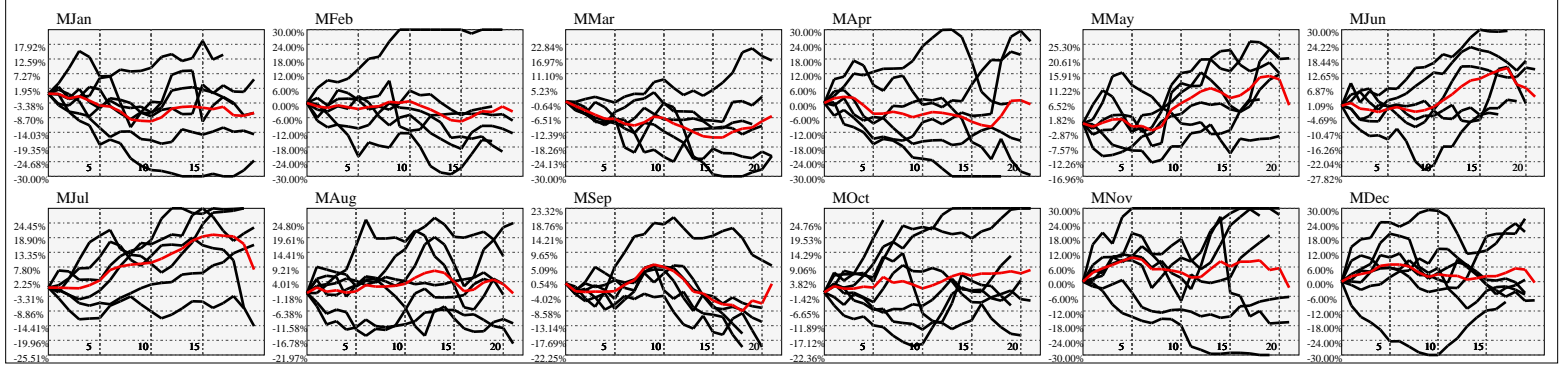
Calendrical Harmonics Standard..



Calendrical Harmonics 3rd Friday..



Calendrical Harmonics Moon Aligned..



Calendrical Harmonics Weekly w/ Day Of Week Alignments..

