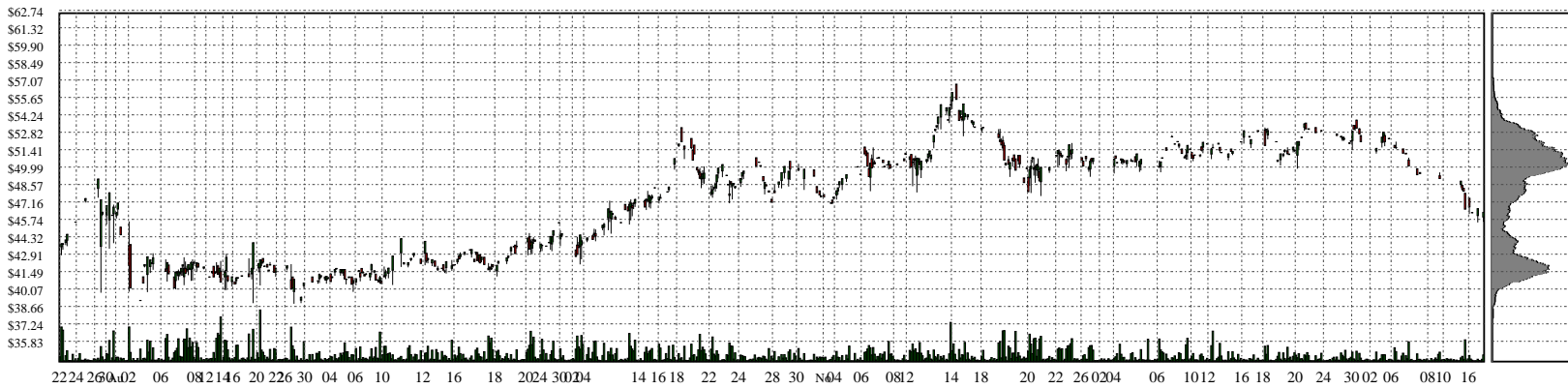
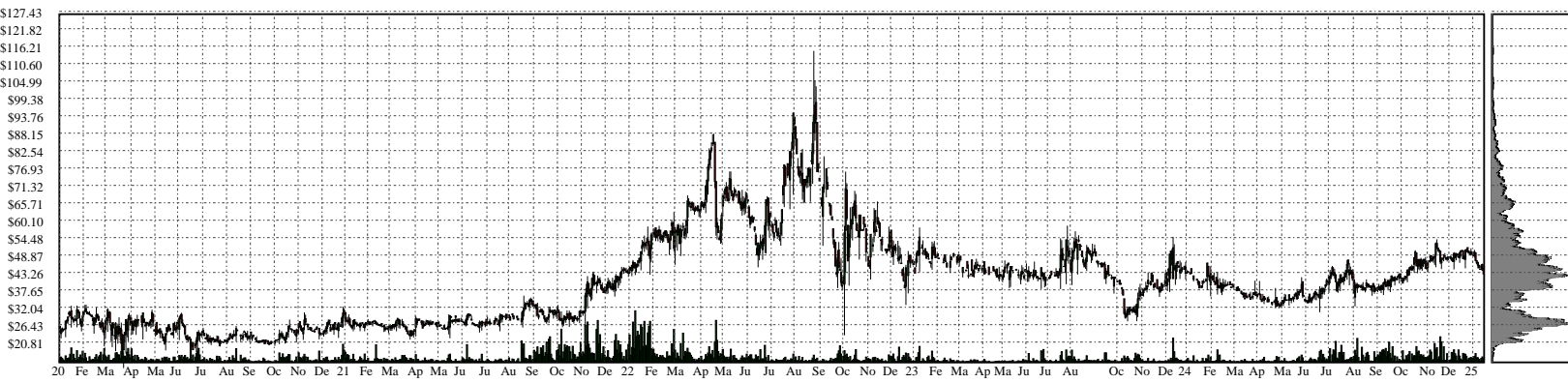
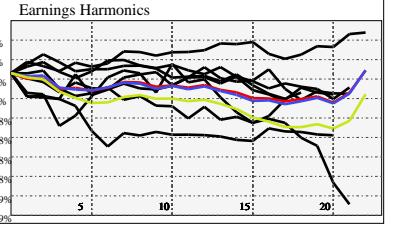


VALU- Value Line Inc

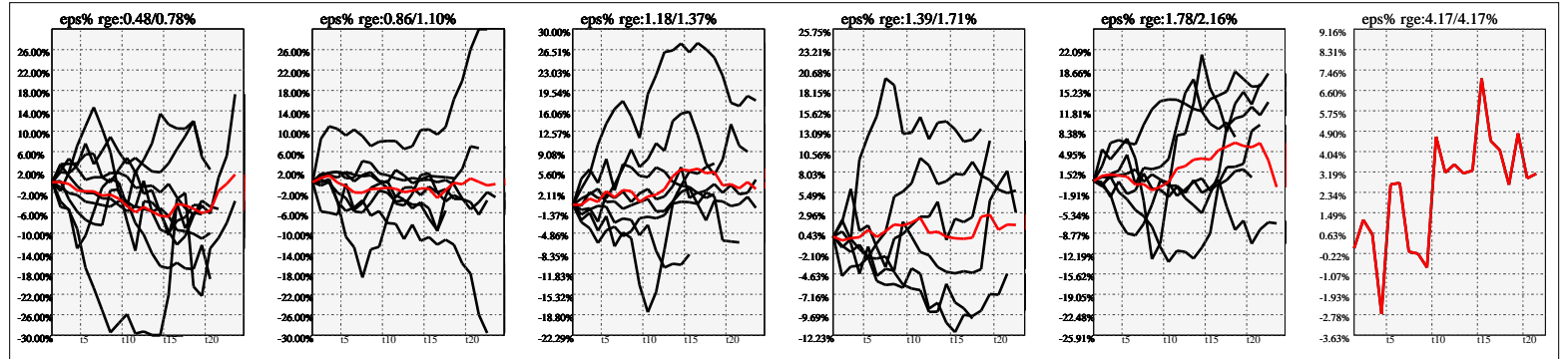


Company Snapshot: VALU

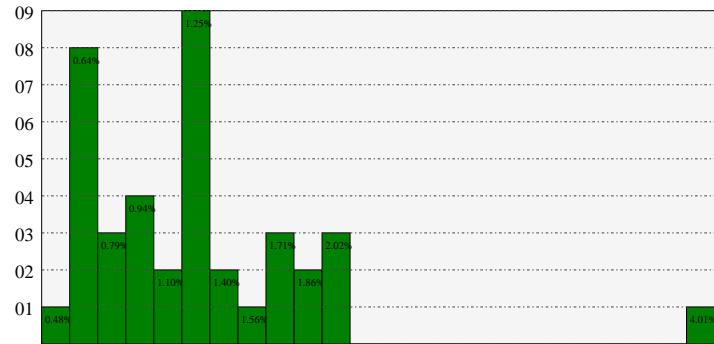
Date	Rev. \$\$	Profit R:	Gross Profit	ebitda	ebitda R:	eps	eps%	Dbt. Exp	Dbt. R:	Net Inc.	Netl R:
2023-04-30	39.7M	0.62	24.5M	12.4M	0.31	1.91	4.1%			18.1M	0.4552
2022-04-30	40.5M	0.57	23.2M	10.4M	0.26	2.5	4.1%	18.00k	0.00044	23.8M	0.5878
2021-04-30	40.4M	0.53	21.5M	3.545M	0.09	2.43	8.2%			23.3M	0.5764
2020-04-30	40.3M	0.55	22.1M	9.312M	0.23	1.55	4.6%			15.7M	0.3887
2019-04-30	36.3M	0.51	18.5M	5.276M	0.15	1.15	5.0%	-10.3M	-0.28455	11.2M	0.3075
2018-04-30	35.9M	0.48	17.4M	3.157M	0.09	1.52	7.3%			14.7M	0.4109
2017-04-30	34.6M	0.49	17.1M	-4.476M	-0.13	1.07	6.1%			10.4M	0.2998
2016-04-30	34.5M	0.55	18.8M	5.220M	0.15	0.75	4.7%			7.291M	0.2111



Earnings Quadrature: Size[6]



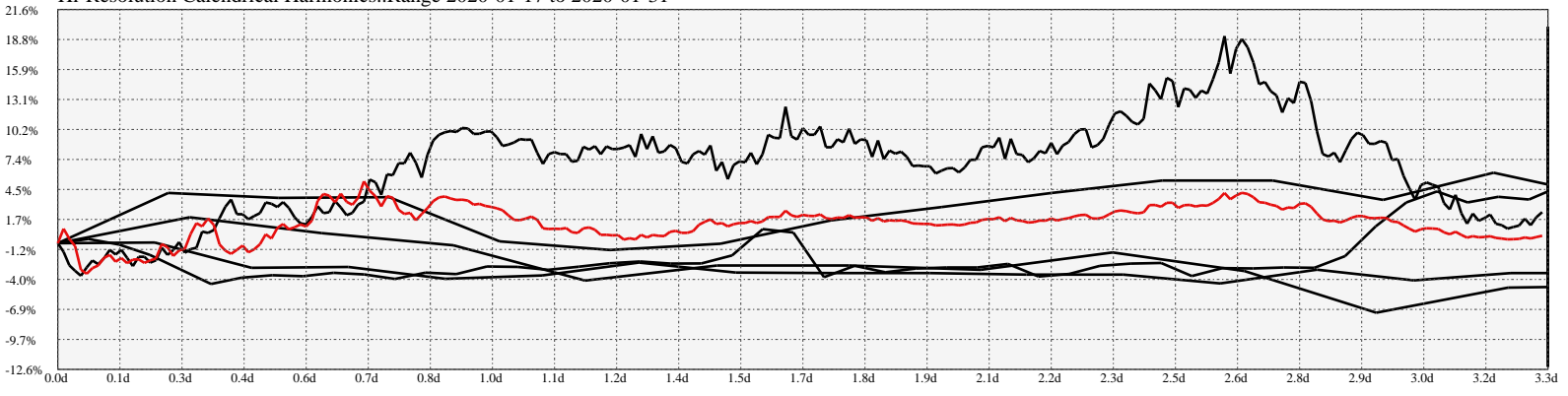
Earnings Frequency Spectrum: 0.48% to 4.01%



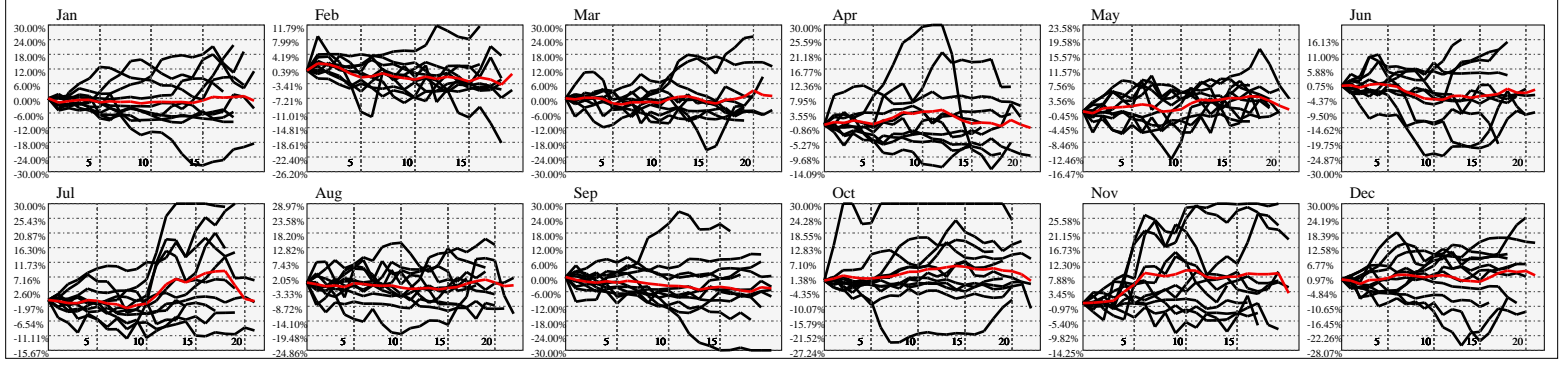
Earnings Calendar As of: 2025-Jan-17

Date	days..	eps \$	Earnings Est.

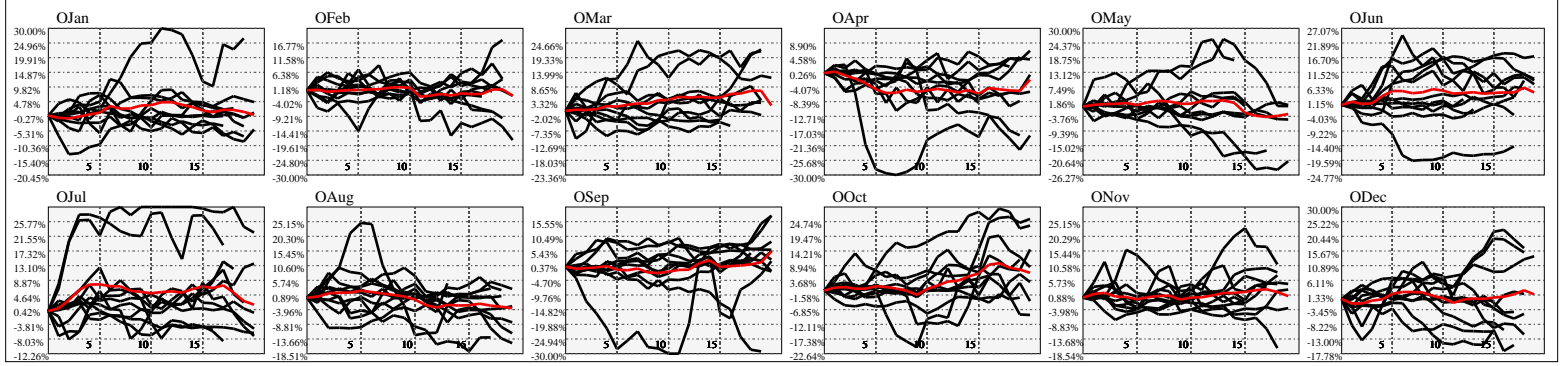
Hi-Resolution Calendrical Harmonics..Range 2020-01-17 to 2020-01-31



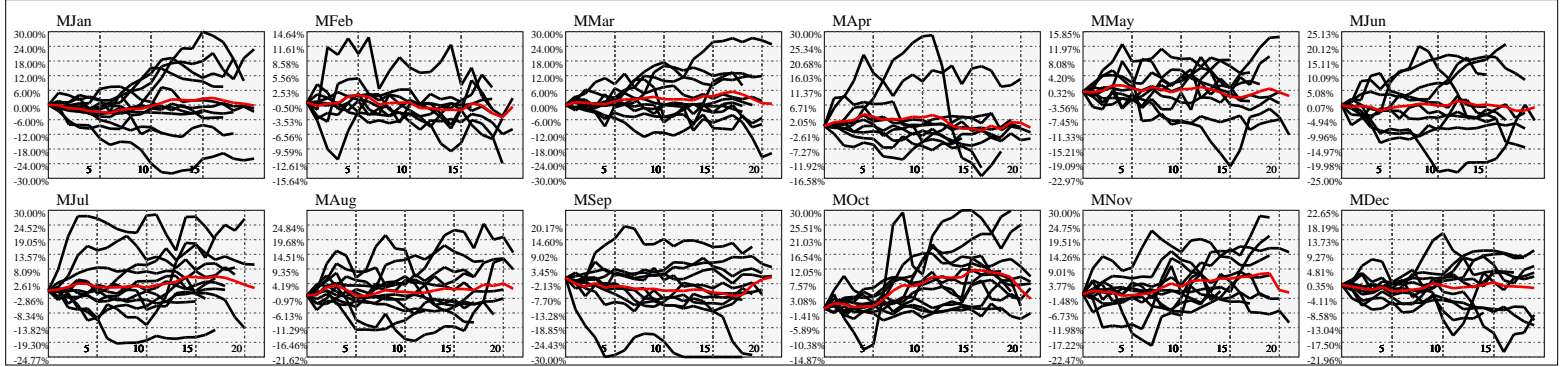
Calendrical Harmonics Standard..



Calendrical Harmonics 3rd Friday..



Calendrical Harmonics Moon Aligned..



Calendrical Harmonics Weekly w/ Day Of Week Alignments..

