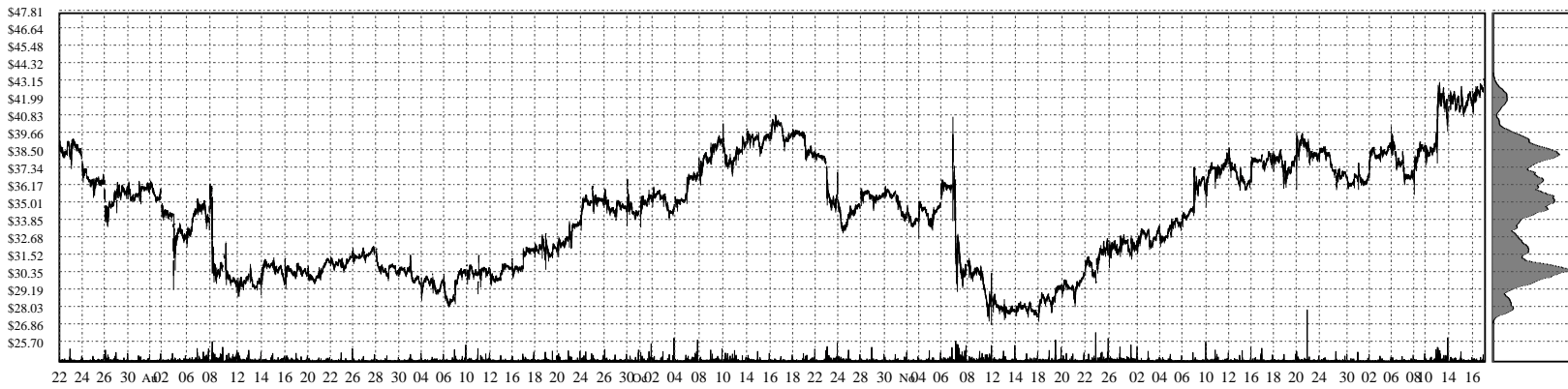
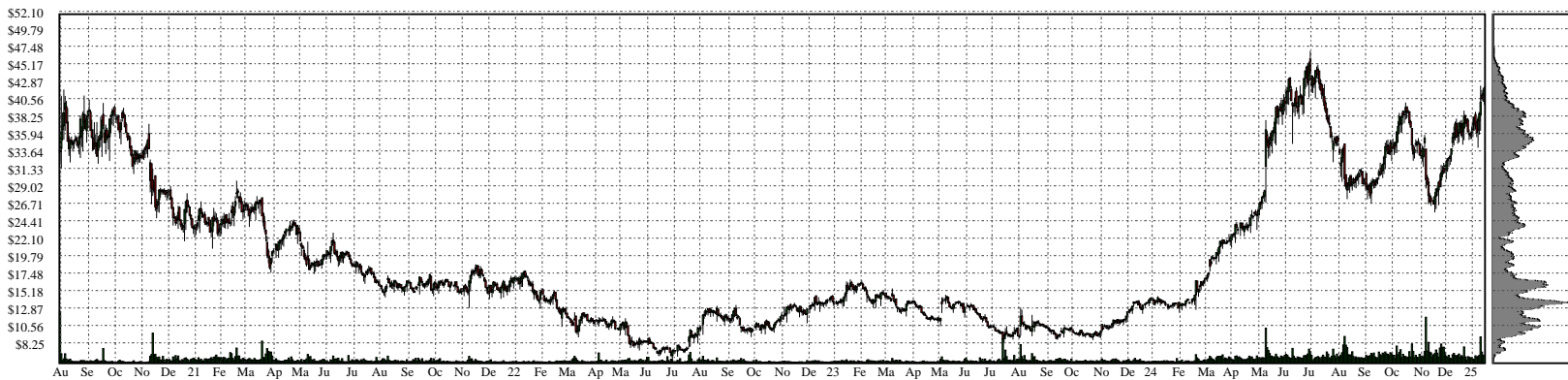
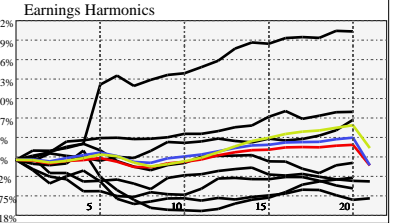


# VITL- Vital Farms, Inc. Common Stock

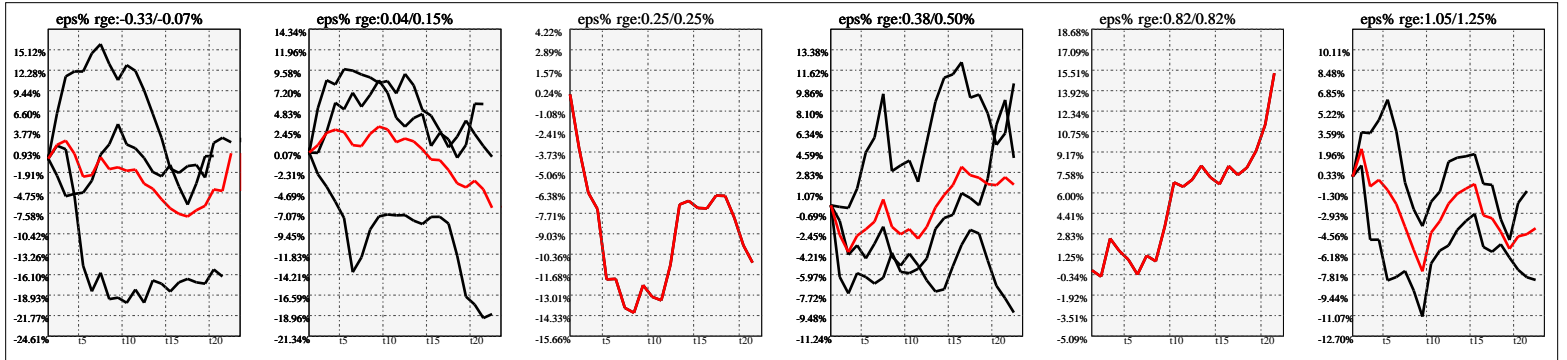


## Company Snapshot: VITL

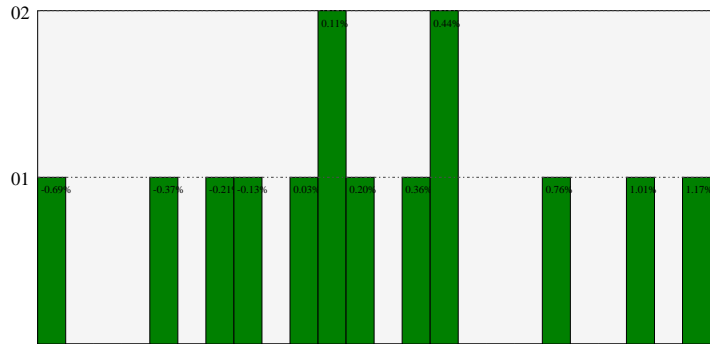
Date	Rev. \$\$	Profit R:	Gross Profit	ebitda	ebitda R:	eps	eps%	Dbt. Exp	Dbt. R:	Net Inc.	Netl R:
2023-03-26	119.2M	0.36	42.7M	10.9M	0.09	0.18	1.2%	-139.0k	-0.00117	7.150M	0.0600
2022-12-25	362.1M	0.30	109.4M	10.2M	0.03	0.031	0.2%	114.0k	0.00031	1.251M	0.0035
2021-12-26	260.9M	0.32	82.9M	3.946M	0.02	0.06	0.3%	52.00k	0.00020	2.429M	0.0093
2020-12-27	214.3M	0.35	74.5M	14.7M	0.07	0.31	1.2%	488.0k	0.00228	8.800M	0.0411
2019-12-31	140.7M	0.30	42.9M	6.688M	0.05	0.097		349.0k	0.00248	3.312M	0.0235
2018-12-31	106.7M	0.33	34.8M	8.213M	0.08	0.17		424.0k	0.00397	5.797M	0.0543
2017-12-31	74.0M	0.25	18.4M	-767.0k	-0.01	-0.0563		524.0k	0.00708	-1.920M	-0.0259



## Earnings Quadrature: Size[6]



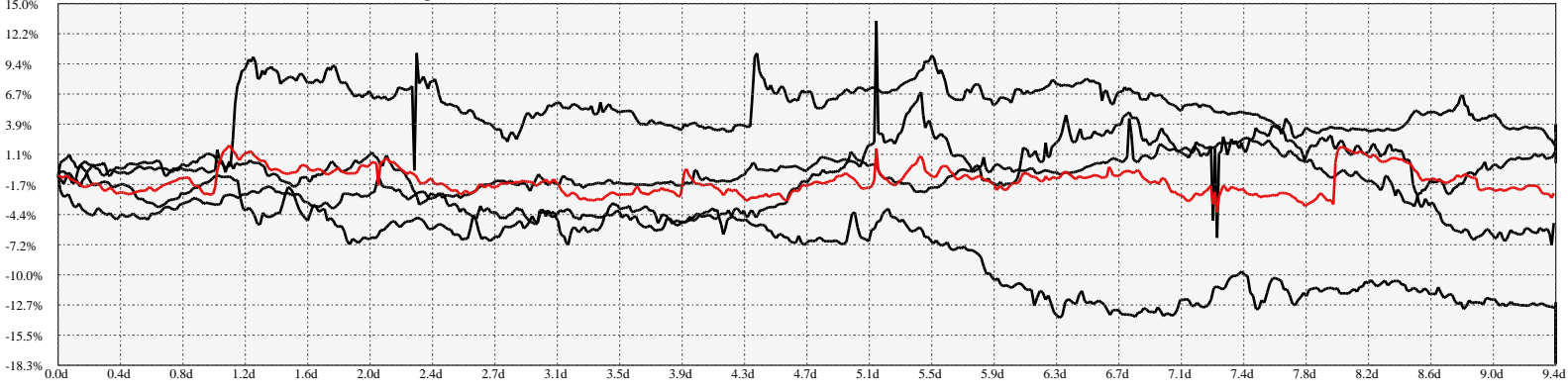
## Earnings Frequency Spectrum: -0.69% to 1.17%



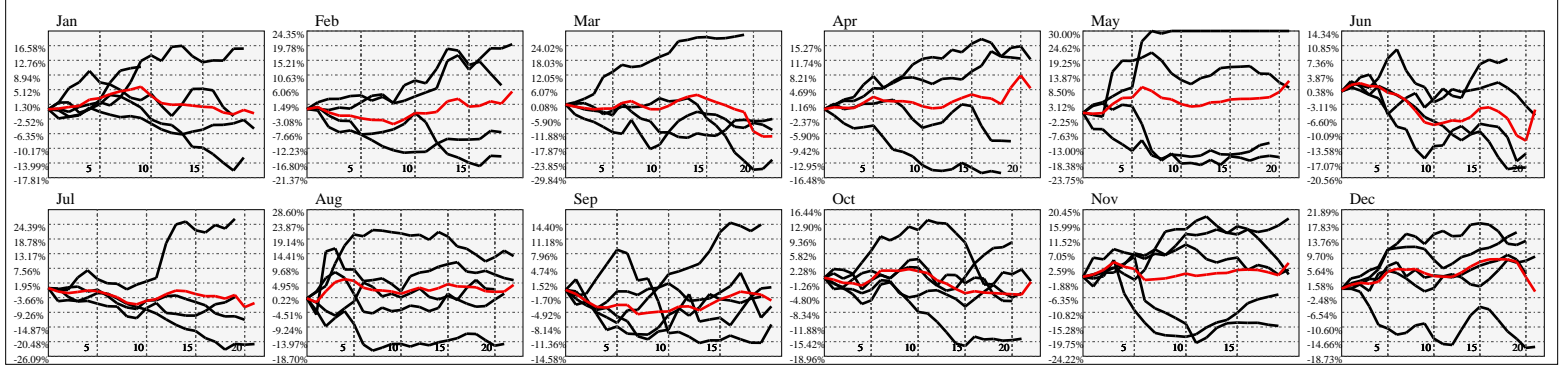
## Earnings Calendar As of: 2025-Jan-17

Date	days..	eps \$	Earnings Est.

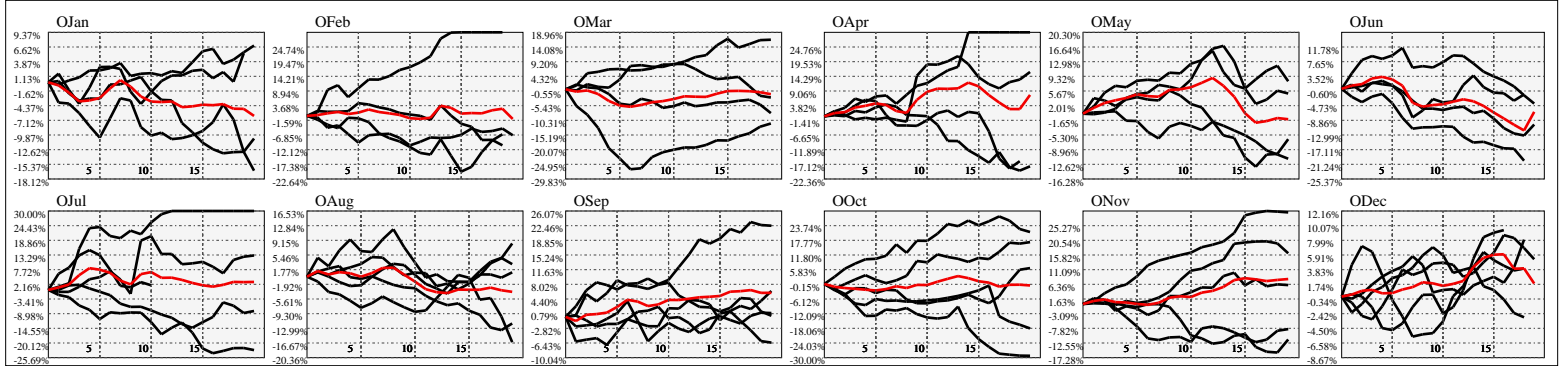
Hi-Resolution Calendrical Harmonics..Range 2021-01-15 to 2021-01-29



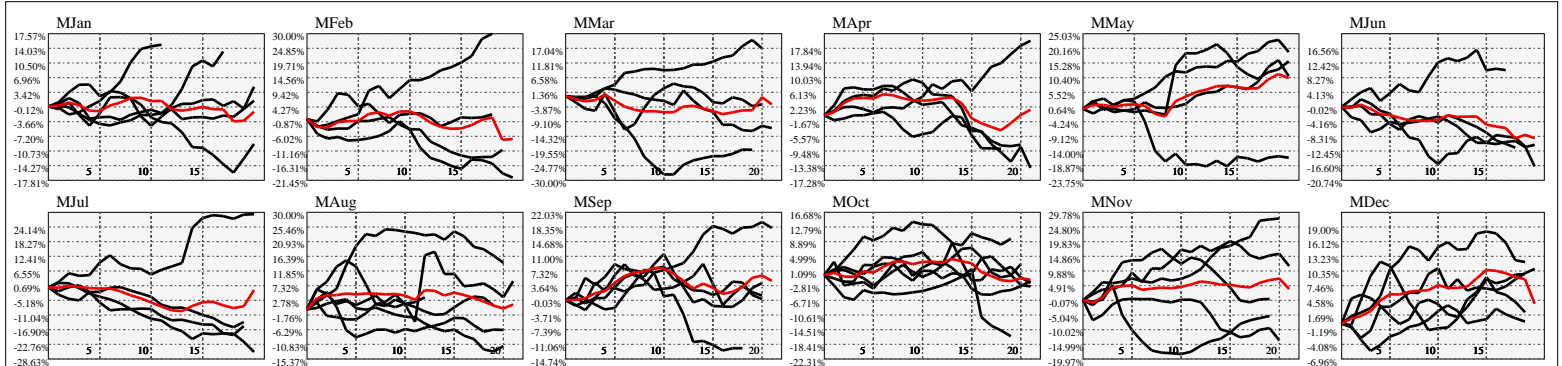
Calendrical Harmonics Standard..



Calendrical Harmonics 3rd Friday..



Calendrical Harmonics Moon Aligned..



Calendrical Harmonics Weekly w/ Day Of Week Alignments..

